

REV.	DESCRIPTION	DRW. CHK.	APP.	DATE
A	RELEASE			

SPECIFICATIONS

Current Rating:
2 Amps

Insulator resistance:
1000 Megohms Min.

Withstand Voltage:
1000V AC/minute

Dielectric withstanding:
250V AC/DC

Operating Temperature:
-25° ~ +85°C

Contact Material:
Brass

Insulator Material:
Nylon 66 UL94V-0

Color: White

Finish:
Gold plated/Tin plated

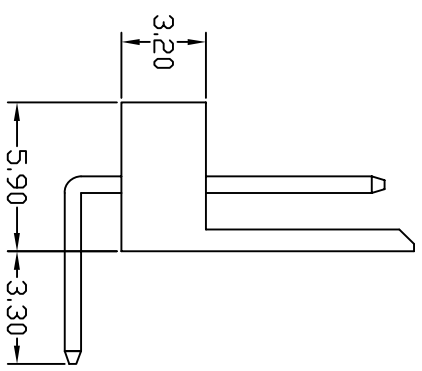
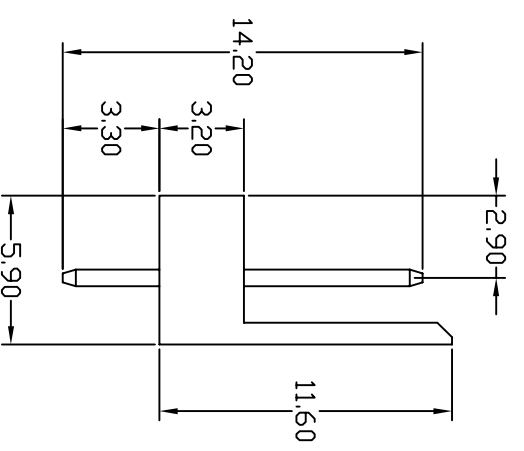
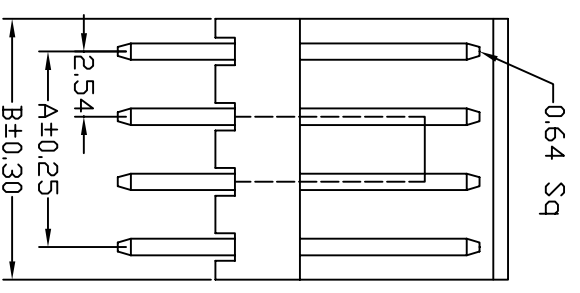
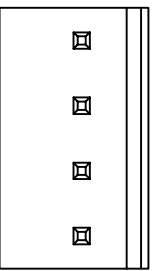
Ordering information:

24W1161-XXX1X-XXX

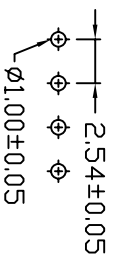
Pins 02~12

S Straight
R Right Angle
0 Color: White

G Gold Plated
T Tin Plated
Contact Plating
01 Normal



Cir-cuits	Dimension mm	
	A	B
2	2.54	5.08
3	5.08	7.62
4	7.62	10.16
5	10.16	12.70
6	12.70	15.24
7	15.24	17.78
8	17.78	20.32
9	20.32	22.86
10	22.86	25.40
11	25.40	27.94
12	27.94	30.48
13	30.48	33.02
14	33.02	35.56
15	35.56	38.10
16	38.10	40.64
17	40.64	43.18
18	43.18	45.72
19	45.72	48.26
20	48.26	50.80



RECOMMENDED P. C. B. LAYOUT

成品規格圖		APP.	ANGLES	SIZE
TITLE	2.54mm Wafer (J4P)	CHK.	±3°	A4
PART NO	24W1161-XXX1X-XXX		LINEAR	0.0 ±0.38 SCALE 4:1
DRW NO	24W0001	DR.		0.00±0.25 SHEET 1/1
UNIT	mm(INCH)	PROJECT		
		王慧芬		
		91.07.29		

