

REV.	DESCRIPTION	DRW.	CHK.	APP.	DATE
A	RELEASE	侯家明	陳振東	陳國標	02.10.29
B	RELEASE	KEN	王月娥	黃紹傳	07.01.03
C	增修標註	KEN	王月娥	黃紹傳	07.12.16
D	增修標註				

Dimension	mm
L1	2.54
L2	5.12
L1	5.08
L2	7.62
L1	10.16
L2	12.74
L1	12.70
L2	15.30
L1	15.24
L2	17.94
L1	17.78
L2	20.48
L1	20.32
L2	23.02
L1	22.86
L2	25.53
L1	25.40
L2	28.12
L1	27.94
L2	30.68
L1	30.48
L2	33.10
L1	33.02
L2	35.80
L1	35.56
L2	38.34
L1	38.10
L2	40.94
L1	40.64
L2	43.30
L1	43.18
L2	45.90
L1	45.72
L2	48.56
L1	48.26
L2	50.80

Ordering information:
24W1160-XXX10-01T

Number of Contact: 02-20
 S Straight
 R Right Angle (turn right)
 D Right Angle (turn left)

0 T Tin Plated
 01 Normal
 0 Color: White

SPECIFICATIONS

Current Rating: 3 Amp

Voltage Rating: 250V

Insulator resistance: 1000 Megohms Min.

Contact Resistance: 20 m ohms Max.

Dielectric withstanding: AC 1000V/minute

Operating Temperature: -40° ~ +75° C

Contact Material: Brass

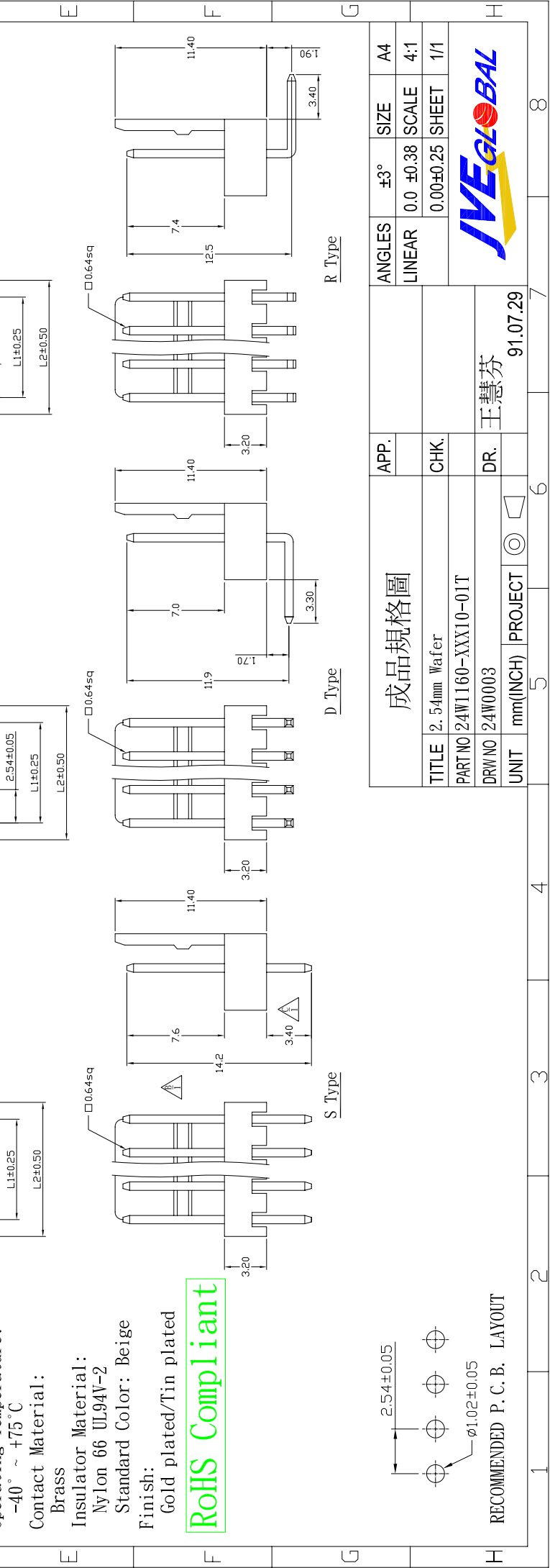
Insulator Material: Nylon 66 UL94V-2

Standard Color: Beige

Finish: Gold plated/Tin plated

RoHS Compliant

RECOMMENDED P. C. B. LAYOUT



TITLE	2.54mm Wafer
PART NO	24W1160-XXX10-01T
DRW NO	24W0003
UNIT	mm(INCH)
PROJECT	PROJECT
DR.	王慧芬
DATE	91.07.29

ANGLES	±3°	SIZE	A4
LINEAR	0.0 ±0.38	SCALE	4:1
	0.00±0.25	SHEET	1/1

