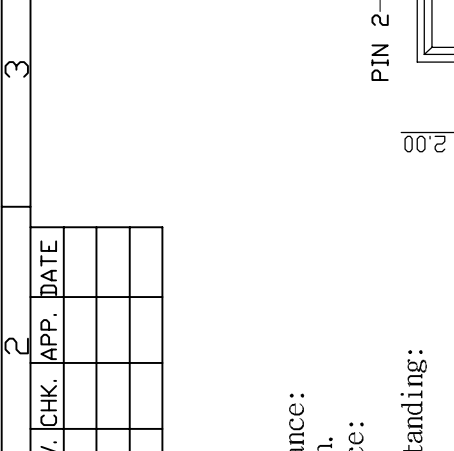
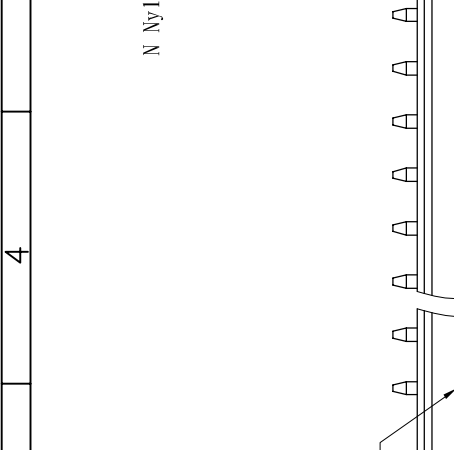
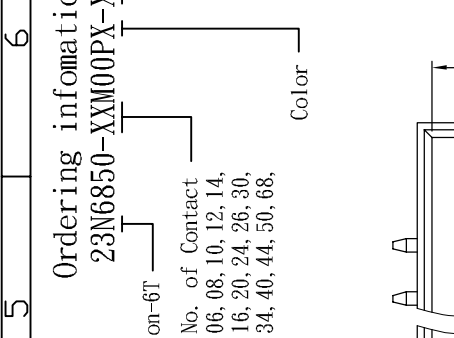


Cir- cuits	Dimension mm	
	L1	L2
2x3	4.00	13.20
2x4	6.00	15.20
2x5	8.00	17.20
2x6	10.00	19.20
2x7	12.00	21.20
2x8	14.00	23.20
2x10	18.00	27.20
2x12	22.00	31.20
2x13	24.00	33.20
2x15	28.00	37.20
2x17	32.00	41.20
2x20	38.00	47.20
2x22	42.00	51.20
2x25	48.00	57.20
2x34	66.00	75.20

**Ordering information:**  
**23N6850-XXM00PX-XXX-A**

N Nylon-6T  
 No. of Contact  
 06, 08, 10, 12, 14,  
 16, 20, 24, 26, 30,  
 34, 40, 44, 50, 68,  
 Color

Dimension Standard 7.50mm  
 G Gold Plated  
 T Tin Plated  
 H Duplex Plated  
 Contact Plating  
 01 Normal  
 10 10 μ"



REV.	DESCRIPTION	DRW.	CHK.	APP.	DATE
A	RELEASE				

**SPECIFICATIONS**  
 Current Rating:  
 1 Amp  
 Insulator resistance:  
 1000 Megohms Min.  
 Contact resistance:  
 25 m ohms Max.  
 Dielectric withstanding:  
 AC 500V/minute  
 Operating Temperature:  
 -40 ~ +105 °C  
 Contact Material:  
 Brass  
 Insulator Material:  
 High Temperature Thermoplastic  
 +Glass Fibre UL94V-0  
 Color: Black  
 Finish:  
 Gold, Tin or Duplex plated  
 Standard: Gold flash all over  
 Duplex plated:  
 Gold plated on contact area  
 Tin on solder area

**RoHS Compliance**

**Ref.**

ANGLES	±3°	SIZE	A4
LINEAR	0.0 ±0.38	SCALE	3:1
	0.00±0.25	SHEET	1/1

**成品規格圖**

TITLE 2.00mm Box Header SMT Type  
 PART NO 23N6850-XXM00PX-XXX-A  
 DRW NO  
 UNIT mm(INCH) PROJECT KEN 96.01.04

RECOMMENDED P. C. B. LAYOUT