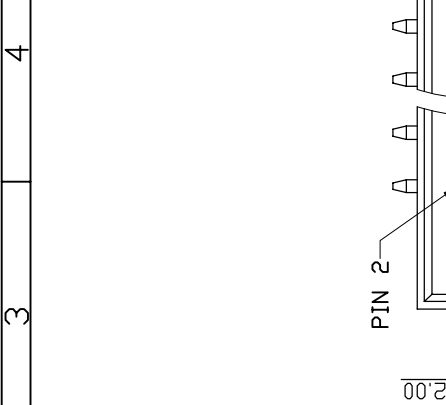


REV.	DESCRIPTION	DRW.	CHK.	APP.	DATE

Ordering information:
23N6850-XXM00X-XXX-A

N Nylon-6T
 No. of Contact
 06, 08, 10, 12, 14,
 16, 20, 24, 26, 30,
 34, 40, 44, 50, 68,
 Color
 G Gold Plated
 T Tin Plated
 H Duplex Plated
 Contact Plating
 01 Normal
 10 10 μ"
 : :
 : :

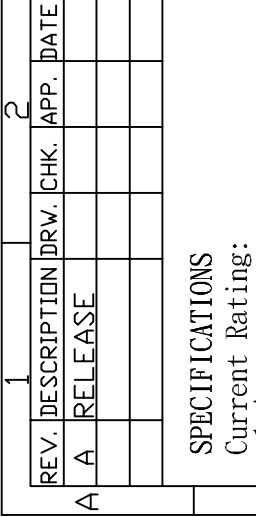
Cir- cuits	Dimension mm
2x3	L1 4.00
2x4	L2 13.20
2x5	6.00
2x6	8.00
2x7	10.00
2x8	12.00
2x10	14.00
2x12	18.00
2x13	22.00
2x15	24.00
2x17	28.00
2x20	32.00
2x22	38.00
2x25	42.00
2x34	48.00
	66.00
	75.20



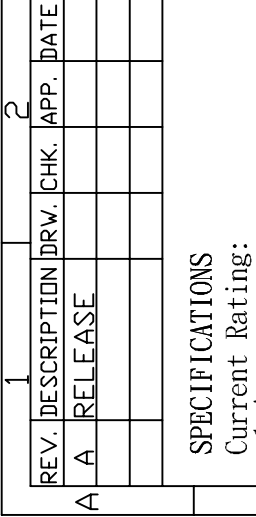
SPECIFICATIONS
 Current Rating:
 1 Amp
 Insulator resistance:
 1000 Megohms Min.
 Contact resistance:
 25 m ohms Max.
 Dielectric withstanding:
 AC 500V/minute
 Operating Temperature:
 -40° ~ +105°C
 Contact Material:
 Brass
 Insulator Material:
 High Temperature Thermoplastic
 +Glass Fibre UL94V-0
 Color: Black
 Finish:
 Gold, Tin or Duplex plated
 Standard: Gold flash all over
 Duplex plated:
 Gold plated on contact area
 Tin on solder area

APP.	SIZE	SCALE	SHEET
A4	±3°	3:1	1/1

Dim.A
 Standard 7.50mm
 Min 5.50mm



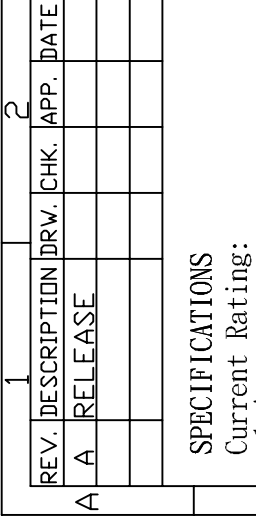
RoHS Compliance



Ref.

TITLE	APP.	ANGLES	±3°	SIZE
2.00mm Box Header SMT Type		LINEAR	0.0 ±0.38	A4
23N6850-XXM00X-XXX-A	CHK.		0.00±0.25	3:1
DRW NO	DR.			1/1
UNIT	mm(INCH)	PROJECT		

96.01.04



RECOMMENDED P. C. B. LAYOUT