

REV.	DESCRIPTION	DRW.	CHK.	APP.	DATE
A	RELEASE				

SPECIFICATIONS

Current Rating:
1 Amp

Insulator resistance:
1000 Megohms Min.

Contact resistance:
25 m ohms Max.

Dielectric withstanding:
AC 500V/minute

Operating Temperature:
-40° ~ +105°C

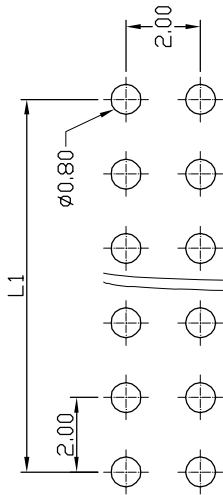
Contact Material:
Brass

Insulator Material:
High Temperature Thermoplastic
+Glass Fibre UL94V-0

Color: Black

Finish:
Gold, Tin or Duplex plated
Standard: Gold flash all over
Duplex plated:
Gold plated on contact area
Tin on solder area

RoHS Compliance



RECOMMENDED P. C. B. LAYOUT

Ordering information:

23N6850-XXDXXX-XXX

N Nylon-6T

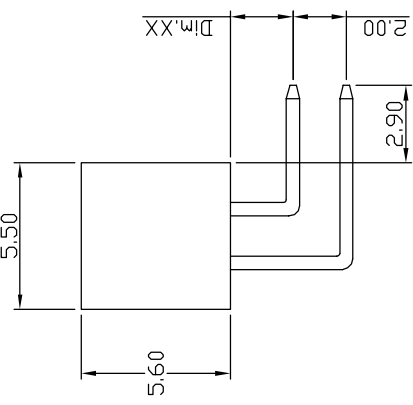
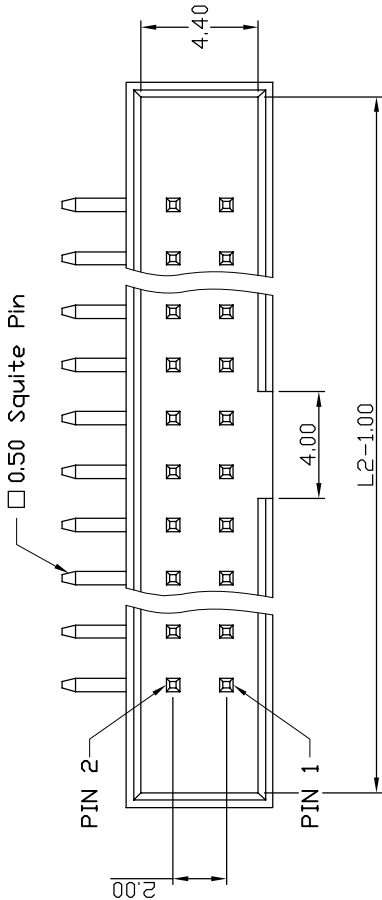
No. of Contact
06, 08, 10, 12, 14,
16, 20, 24, 26, 30,
34, 40, 44, 50, 68,

Dimension
10 = 1.00mm
15 = 1.50mm
XX = X.XXmm

Color

G Gold Plated
T Tin Plated
H Duplex Plated

Contact Plating
01 Normal
10 10 µ"



Ref.

Circuits	Dimension mm	
	L1	L2
2x3	4.00	13.20
2x4	6.00	15.20
2x5	8.00	17.20
2x6	10.00	19.20
2x7	12.00	21.20
2x8	14.00	23.20
2x10	18.00	27.20
2x12	22.00	31.20
2x13	24.00	33.20
2x15	28.00	37.20
2x17	32.00	41.20
2x20	38.00	47.20
2x22	42.00	51.20
2x25	48.00	57.20
2x34	66.00	75.20

成品規格圖		APP.	ANGLES	±3°	SIZE	A4
TITLE 2.00mm Box Header Right Angle Type		CHK.	LINEAR	0.0	±0.38	3:1
PART NO 23N6850-XXDXXX-XXX				0.00±0.25		1/1
DRW NO	DR.	KEN				
UNIT mm(INCH)	PROJECT	96.01.04				



8