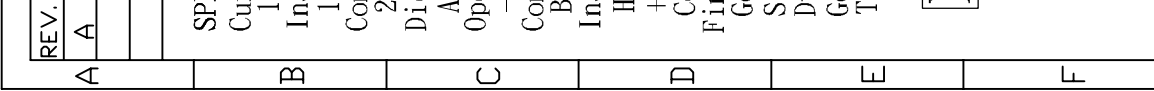
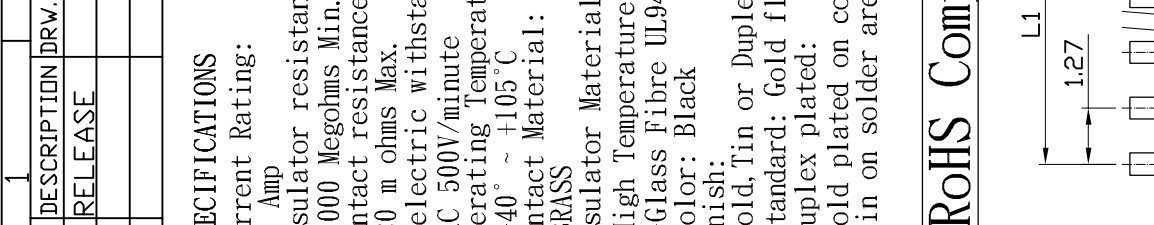
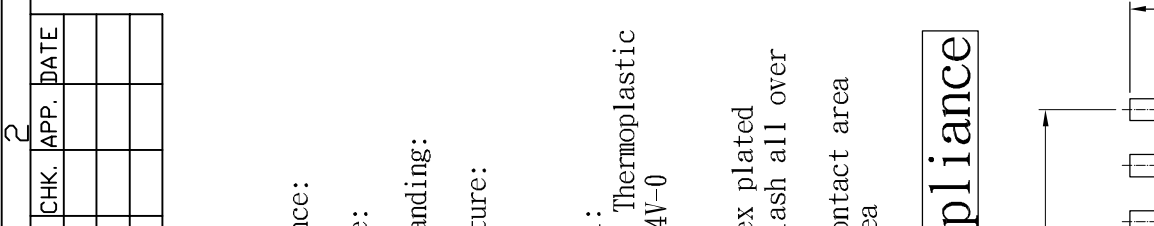
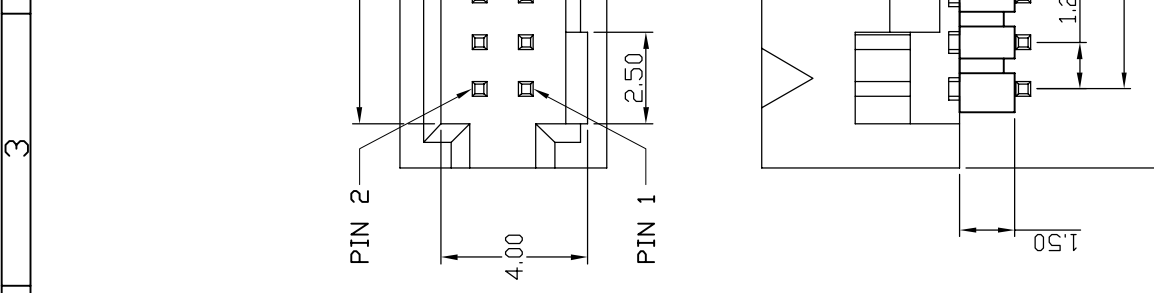
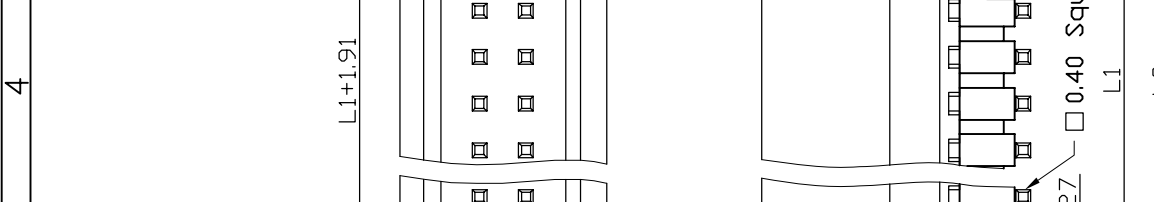
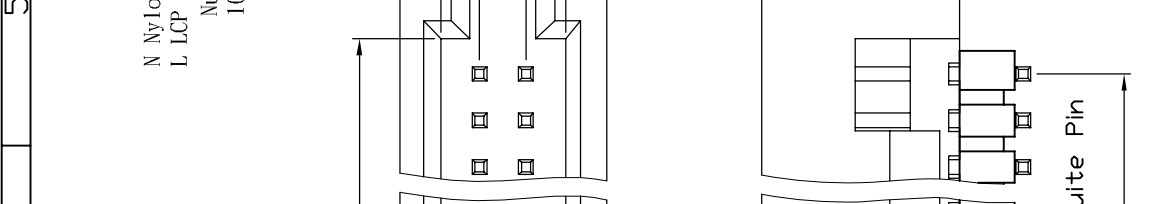
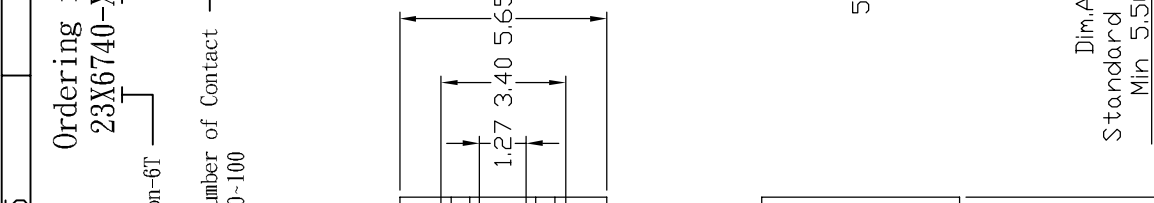
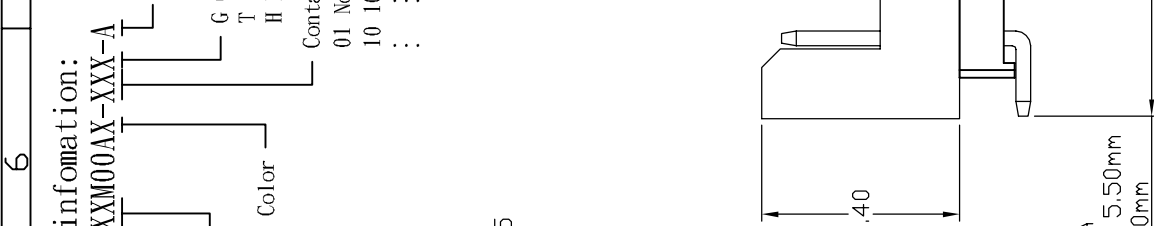


REV.	DESCRIPTION	DRW.	CHK.	APP.	DATE
A	RELEASE				

SPECIFICATIONS
 Current Rating:
 1 Amp
 Insulator resistance:
 1000 Megohms Min.
 Contact resistance:
 20 m ohms Max.
 Dielectric withstanding:
 AC 500V/minute
 Operating Temperature:
 -40° ~ +105°C
 Contact Material:
 BRASS
 Insulator Material:
 High Temperature Thermoplastic
 +Glass Fibre UL94V-0
 Color: Black
 Finish:
 Gold, Tin or Duplex plated
 Standard: Gold flash all over
 Duplex plated:
 Gold plated on contact area
 Tin on solder area



Ordering information:
 23X6740-XXM00AX-XXX-A
 N Nylon-6T
 L LCP
 Number of Contact
 10-100
 Color
 Dimension
 Standard 5.50mm
 G Gold Plated
 T Tin Plated
 H Duplex Plated
 Contact Plating
 01 Normal
 10 10 μ"

ANGLES	±3°	SIZE	A4
LINEAR	0.0 ±0.38	SCALE	3:1
	0.00±0.25	SHEET	1/1

Ref.

TITLE	1.27mm Box Header SMT Type	CHK.
PART NO	23X6740-XXM00AX-XXX-A	
DRW NO		
UNIT	mm(INCH)	PROJECT

DR. KEN
 96.01.04

96.01.04

5 6 7

8

RECOMMENDED P. C. B. LAYOUT

8

8

