

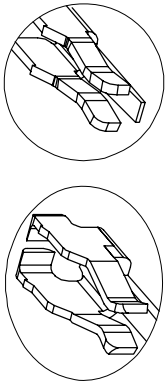
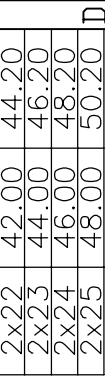
REV.	DESCRIPTION	DRW.	CHK.	APP.	DATE
A	RELEASE				

Ordering information:
22P8252-XXM10X-XXX

Number of Contact: 06~50
 Color: G Gold Plated, T Tin Plated, H Duplex plated
 Contact Plating: 01 Normal, 10 10 μ "

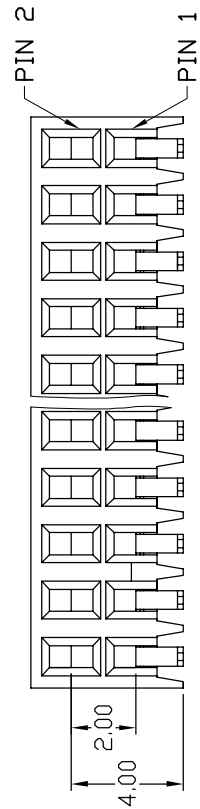
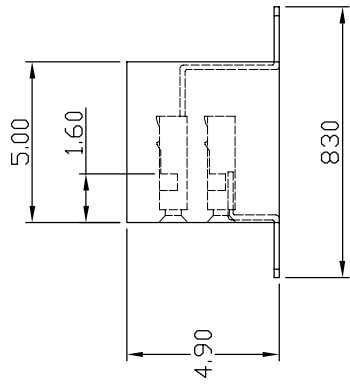
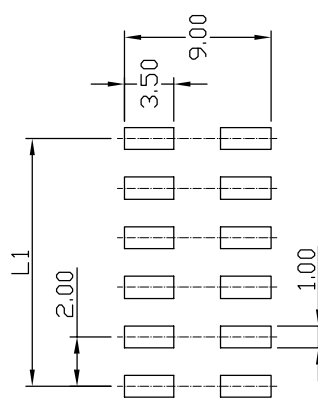
SPECIFICATIONS
 Current Rating: 1 Amp
 Insulator resistance: 1000 Megohms Min.
 Contact resistance: 25 m ohms Max.
 Dielectric withstanding: AC 500V/minute
 Operating Temperature: -40° ~ +105°C
 Contact Material: Phosphor Bronze
 Insulator Material: High Temperature Thermoplastic, UL 94V-0
 Color: Black

Finish:
 Gold, Tin or Duplex plated
 Standard: Gold flash all over
 Duplex plated:
 Gold plated on contact area
 Tin on solder area



THREE SIDE CONTACT TERMINAL

RoHS Compliance



Ref.

成品規格圖		APP.	ANGLES	±3°	SIZE	A4
TITLE	2.00mm Female Header SMT Type	CHK.	LINEAR	0.0	±0.38	SCALE 3:1
PART NO	22P8252-XXM10X-XXX			0.00	±0.25	SHEET 1/1
DRW NO		DR.	KEN			
UNIT	mm(INCH)	PROJECT	◎			96.01.04



RECOMMENDED P. C. B. LAYOUT