

REV.	DESCRIPTION	DRW.	CHK.	APP.	DATE
A	RELEASE				

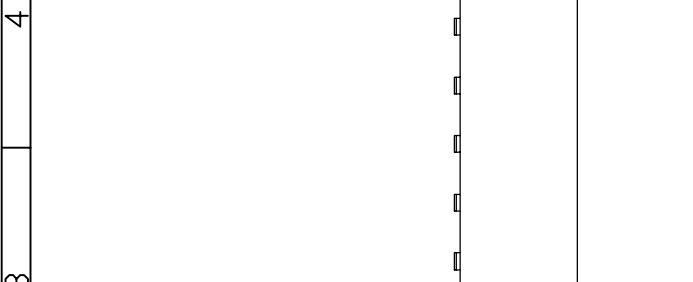
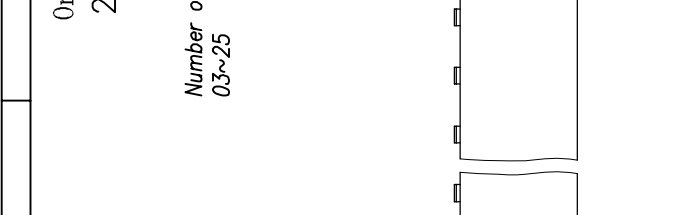
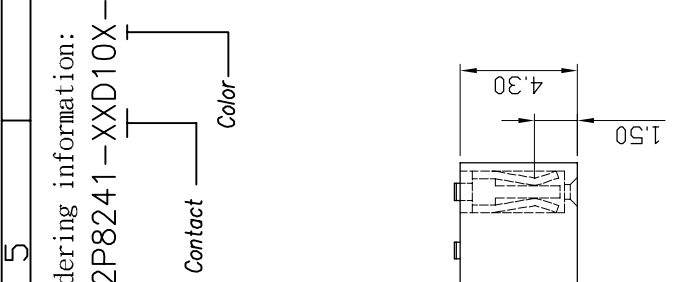
Ordering information:
22P8241-XXD10X-XXX

Number of Contact
 03~25

Color

G Gold Plated
 T Tin Plated
 H Duplex plated

Contact Plating
 01 Normal
 10 10 μ"
 : :
 : :



Dimension	mm
L1	4.00
L2	6.50
3	6.00
4	8.00
5	10.50
6	12.00
7	14.00
8	16.00
9	18.00
10	20.00
11	22.00
12	24.00
13	26.00
14	28.00
15	30.00
16	32.00
17	34.00
18	36.00
19	38.00
20	40.00
21	42.00
22	44.00
23	46.00
24	48.00
25	50.50

SPECIFICATIONS

Current Rating:
 1 Amp

Insulator resistance:
 1000 Megohms Min.

Contact resistance:
 25 m ohms Max.

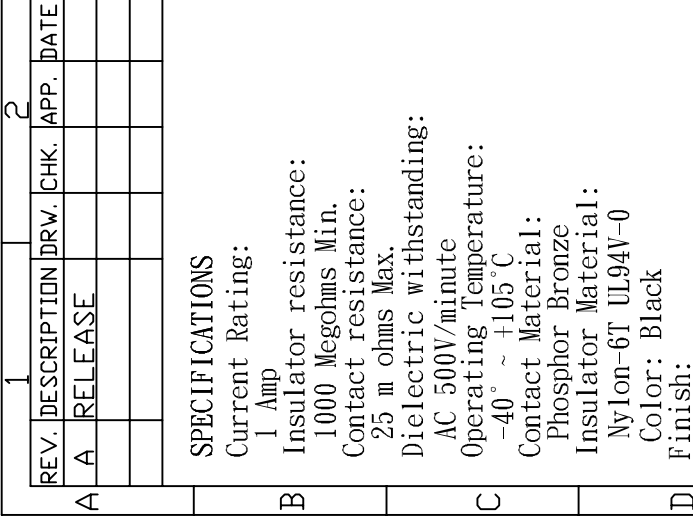
Dielectric withstanding:
 AC 500V/minute
 Operating Temperature:
 -40° ~ +105°C

Contact Material:
 Phosphor Bronze

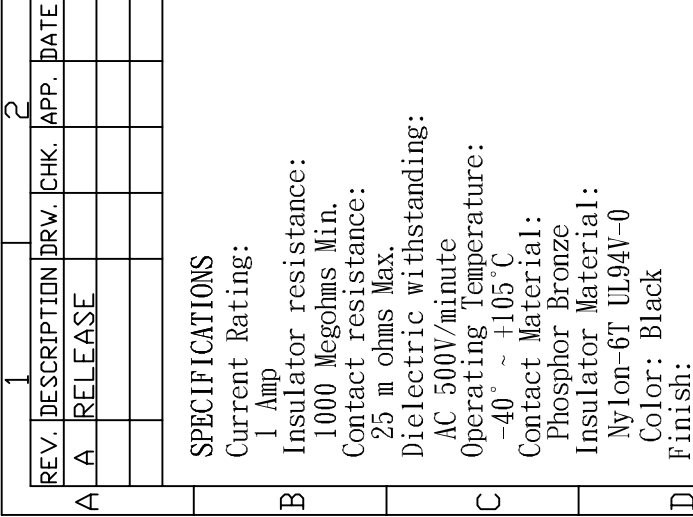
Insulator Material:
 Nylon-6T UL94V-0

Color: Black

Finish:
 Gold, Tin or Duplex plated
 Standard: Gold flash all over
 Duplex plated:
 Gold plated on contact area
 Tin on solder area



RoHS Compliance



RECOMMENDED P. C. B. LAYOUT

Ref.

ANGLES	±3°	SIZE	A4
LINEAR	0.0	±0.38	SCALE 3:1
	0.00	±0.25	SHEET 1/1

TITLE	2.00mm Female Header Right Angle Type	CHK.
PART NO	22P8241-XXD10X-XXX	
DRW NO		
UNIT	mm(INCH)	PROJECT
	5	6
		7
		8

DR. KEN 96.01.04

