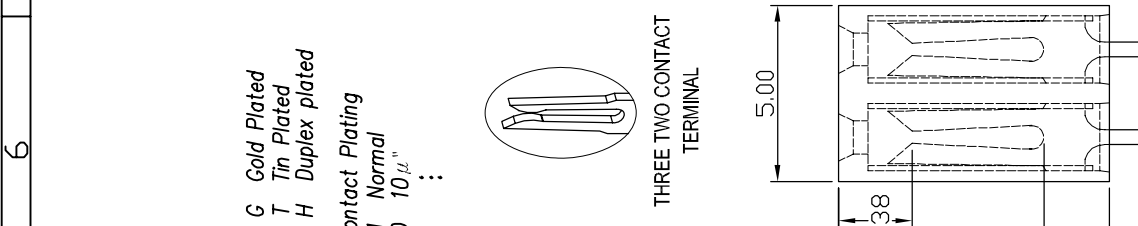


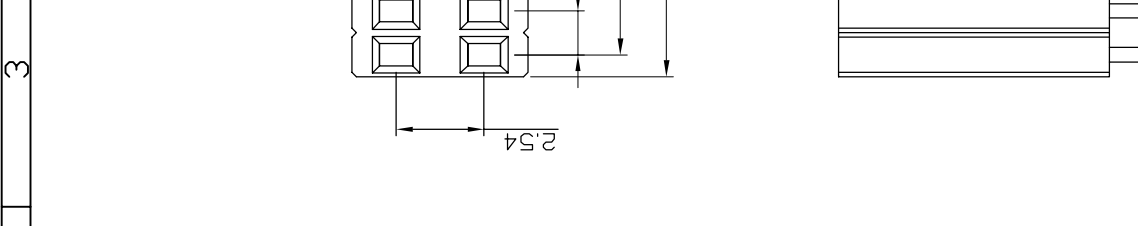
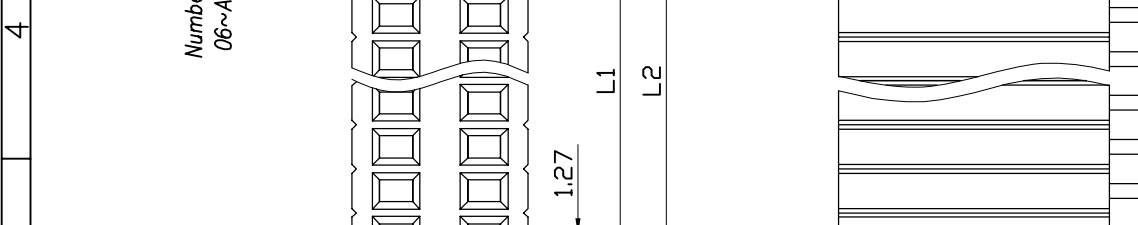
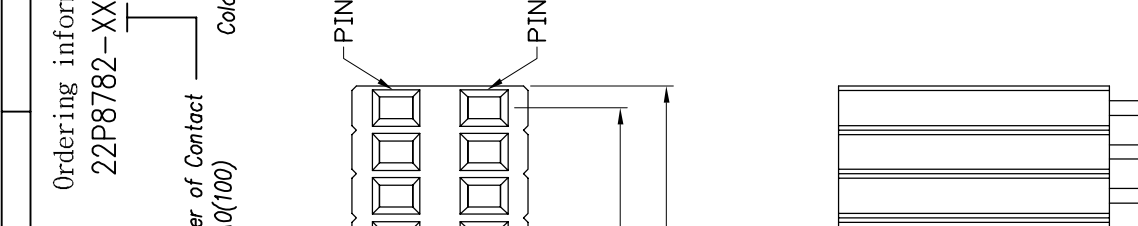
REV.	DESCRIPTION	DRW.	CHK.	APP.	DATE
A	RELEASE				

**Ordering information:**  
 22P8782-XXS10X-XXX-01

Number of Contact: 06~A0(100)  
 Color: \_\_\_\_\_



**SPECIFICATIONS**  
 Current Rating: 1 Amp  
 Insulator resistance: 1000 Megohms Min.  
 Contact resistance: 20 m ohms Max.  
 Dielectric withstanding: AC 500V/minute  
 Operating Temperature: -40° ~ +105°C  
 Contact Material: Phosphor Bronze  
 Insulator Material: High Temperature Thermoplastic +Glass Fibre UL94V-0  
 Color: Black  
 Finish: Gold, Tin or Duplex plated  
 Standard: Gold flash all over  
 Duplex plated: Gold plated on contact area  
 Tin on solder area  
 Mating male: 0.46 Sq



**RoHS Compliance**

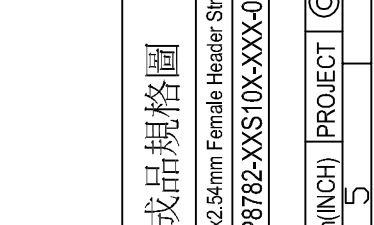
ANGLES	±3°	SIZE	A4
LINEAR	0.0 ±0.38	SCALE	3:1
	0.00±0.25	SHEET	1/1

TITLE: 1.27x2.54mm Female Header Straight Type  
 PART NO: 22P8782-XXS10X-XXX-01  
 DRW NO: \_\_\_\_\_  
 UNIT: mm(INCH) PROJECT: KEN DR. KEN 96.01.04

APP.	ANGLES	±3°	SIZE	A4
	LINEAR	0.0 ±0.38	SCALE	3:1
		0.00±0.25	SHEET	1/1

成品規格圖  
 1.27x2.54mm Female Header Straight Type  
 22P8782-XXS10X-XXX-01  
 PROJECT: KEN DR. KEN 96.01.04

RECOMMENDED P. C. B. LAYOUT



Ref.

Dimension	mm
L1	2.54
L2	4.21
2x3	3.81
2x4	5.48
2x5	6.75
2x6	8.02
2x7	9.29
2x8	10.56
2x9	11.83
2x10	13.10
2x11	14.37
2x12	15.64
2x13	16.91
2x14	18.18
2x15	19.45
2x16	20.72
2x17	21.99
2x18	23.26
2x19	24.53
2x20	25.80
2x21	27.07
2x22	28.34
2x23	29.61
2x24	30.88
2x25	32.15
2x26	33.42
2x27	34.69
2x28	35.96
2x29	37.23
2x30	38.50
2x31	39.77
2x32	41.04
2x33	42.31
2x34	43.58
2x35	44.85
2x36	46.12
2x37	47.39
2x38	48.66
2x39	49.93
2x40	51.20
2x41	52.47
2x42	53.74
2x43	55.01
2x44	56.28
2x45	57.55
2x46	58.82
2x47	60.09
2x48	61.36
2x49	62.63
2x50	63.90

THREE TWO CONTACT TERMINAL

PIN 0.4x0.4t

96.01.04

JVEGLOBAL