

1	2	3	4	5	6	7	8
REV. DESCRIPTION	DRW. CHK.	APP.	DATE				
A	RELEASE						

Ordering information:
22P8782-XXS10X-XXX

Number of Contact
 06~A0(100)

Color

PIN 2

PIN 1

1.27

L1

L2

Ordering information:
 22P8782-XXS10X-XXX

Color

Number of Contact
 06~A0(100)

PIN 2

PIN 1

1.27

L1

L2

SPECIFICATIONS

Current Rating:
 1 Amp

Insulator resistance:
 1000 Megohms Min.

Contact resistance:
 20 m ohms Max.

Dielectric withstanding:
 AC 500V/minute

Operating Temperature:
 -40° ~ +105°C

Contact Material:
 Phosphor Bronze

Insulator Material:
 High Temperature Thermoplastic
 +Glass Fibre UL94V-0

Color: Black

Finish:
 Gold, Tin or Duplex plated

Standard: Gold flash all over

Duplex plated:
 Gold plated on contact area
 Tin on solder area

Mating male:
 0.46 Sq

Ordering information:
 22P8782-XXS10X-XXX

Color

Number of Contact
 06~A0(100)

PIN 2

PIN 1

1.27

L1

L2

Ordering information:
 22P8782-XXS10X-XXX

Color

Number of Contact
 06~A0(100)

PIN 2

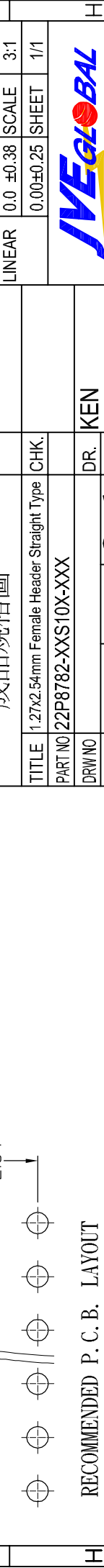
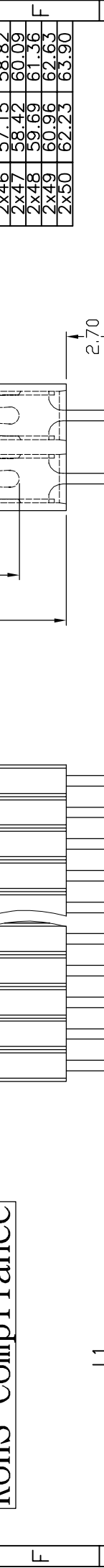
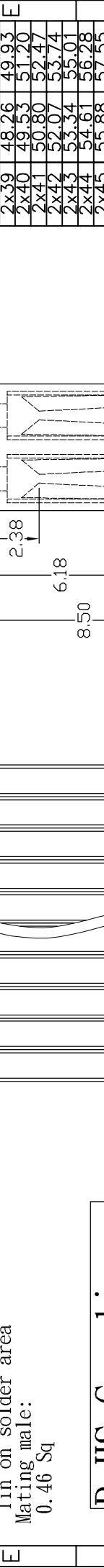
PIN 1

1.27

L1

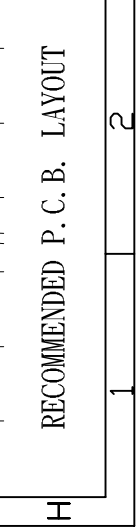
L2

RoHS Compliance

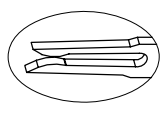


APP.		ANGLES	±3°	SIZE	A4
TITLE	1.27x2.54mm Female Header Straight Type	LINEAR	0.0 ±0.38	SCALE	3:1
PART NO	22P8782-XXS10X-XXX		0.00±0.25	SHEET	1/1
DRW NO					
UNIT	mm(INCH)	PROJECT	⊙	DR.	KEN
	5				96.01.04
					7
					8

RECOMMENDED P. C. B. LAYOUT



Ref.



THREE TWO CONTACT
 TERMINAL

Contact Plating
 01 Normal
 10 10"
 :
 :
 :

G Gold Plated
 T Tin Plated
 H Duplex plated