

1 2 3 4 5 6 7 8

REV.	DESCRIPTION	DRW.	CHK.	APP.	DATE
A	RELEASE				

SPECIFICATIONS

Current Rating:
1 Amp
Insulator resistance:
1000 Megohms Min.
Contact resistance:
20 m ohms Max.
Dielectric withstanding:
AC 500V/minute
Operating Temperature:
-40° ~ +105°C
Contact Material:
Phosphor Bronze
Insulator Material:
High Temperature Thermoplastic
+Glass Fibre UL94V-0
Color: Black
Finish:
Gold, Tin or Duplex plated
Standard: Gold flash all over
Duplex plated:
Gold plated on contact area
Tin on solder area
Mating male:
0.46 Sq

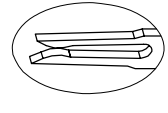
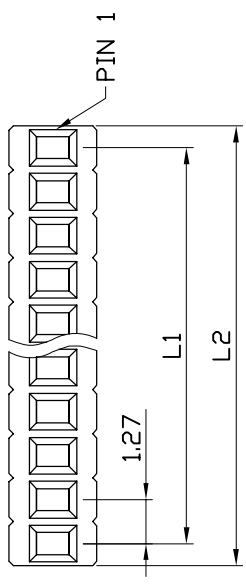
RoHS Compliance

Ordering information:
22P8781-XXS10X-XXX

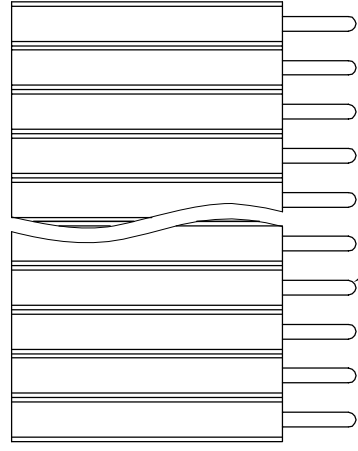
Number of Contact
03~50

Color
G Gold Plated
T Tin Plated
H Duplex plated

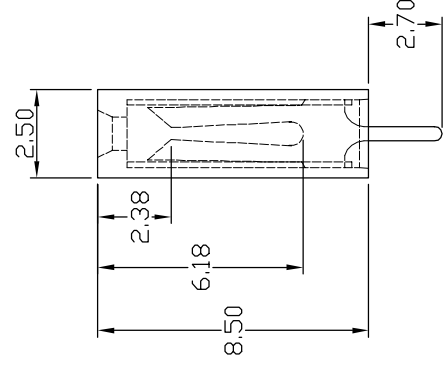
Contact Plating
01 Normal
10 10"
: :
: :



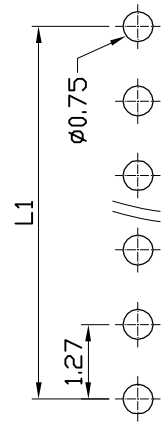
THREE TWO CONTACT
TERMINAL



PIN 0.46x0.46t



Ref.



RECOMMENDED P. C. B. LAYOUT

APP.		ANGLES	±3°	SIZE	A4
成品規格圖		LINEAR	0.0 ±0.38	SCALE	3:1
TITLE	1.27mm Female Header Straight Type	CHK.		SHEET	1/1
PART NO	22P8781-XXS10X-XXX				
DRW NO		DR.	KEN		
UNIT	mm(INCH)	PROJECT	◎		96.01.04



1 2 3 4 5 6 7 8