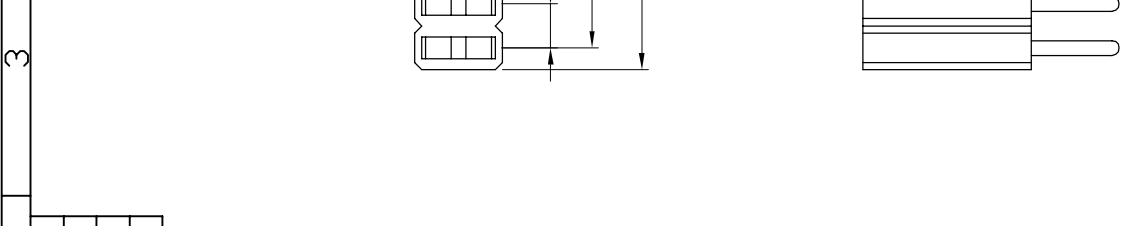
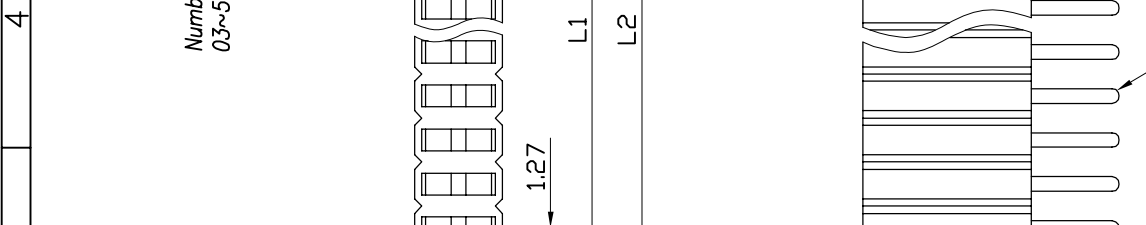
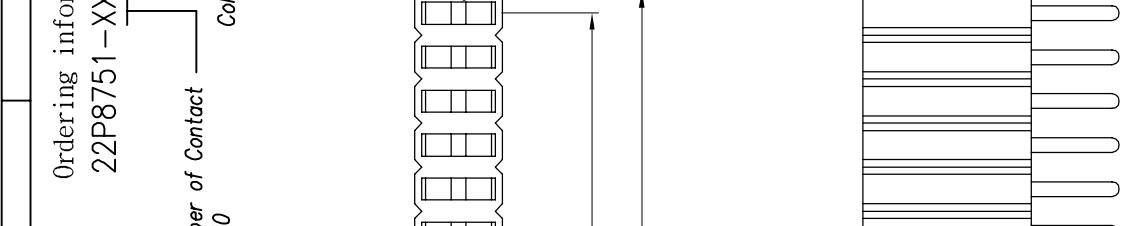
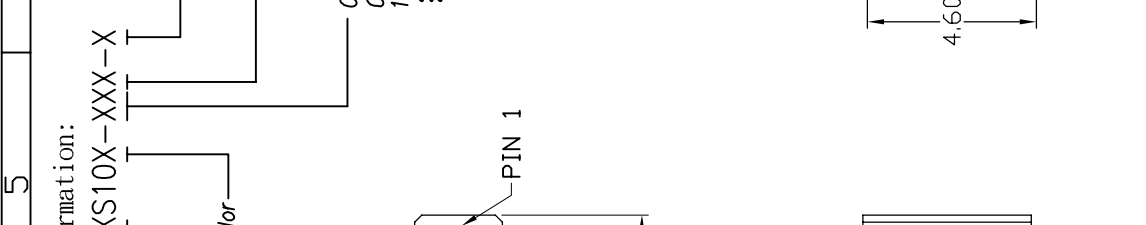


REV.	DESCRIPTION	DRW.	CHK.	APP.	DATE
A	RELEASE				

SPECIFICATIONS
 Current Rating:
 1 Amp
 Insulator resistance:
 1000 Megohms Min.
 Contact resistance:
 20 m ohms Max.
 Dielectric withstanding:
 AC 500V/minute
 Operating Temperature:
 -40° ~ +105°C
 Contact Material:
 Phosphor Bronze
 Insulator Material:
 High Temperature Thermoplastic
 +Glass Fibre UL94V-0
 Color: Black
 Finish:
 Gold, Tin or Duplex plated
 Standard: Gold flash all over
 Duplex plated:
 Gold plated on contact area
 Tin on solder area
 Mating male:
 0.46 Sq

Ordering information:
 22P8751-XXS10X-XXX-X
 Number of Contact
 03~50
 Color
 N Nylon-6T
 G Gold Plated
 T Tin Plated
 H Duplex plated
 Contact Plating
 01 Normal
 10 10μ"

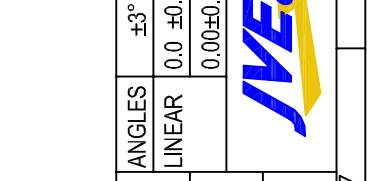


RoHS Compliance

ANGLE	±3°	SIZE	A4
LINEAR	0.0 ±0.38	SCALE	3:1
	0.00±0.25	SHEET	1/1

TITLE 1.27mm Female Header Straight Type
 PART NO 22P8751-XXS10X-XXX-X
 DRW NO
 UNIT mm(INCH) PROJECT KEN DR. 96.01.04

Ref.



8	7	6	5	4	3	2	1
---	---	---	---	---	---	---	---