

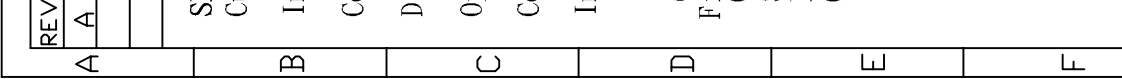
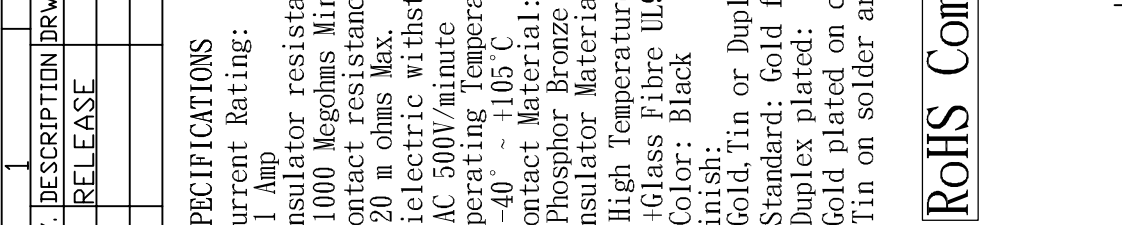
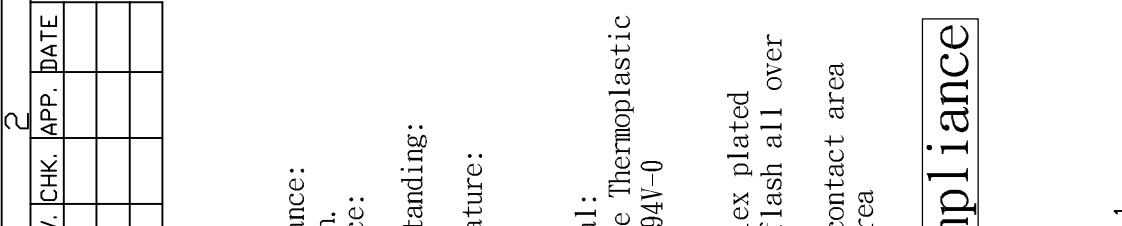
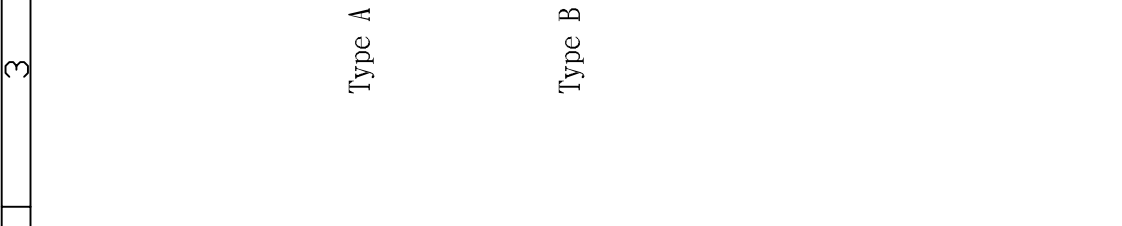
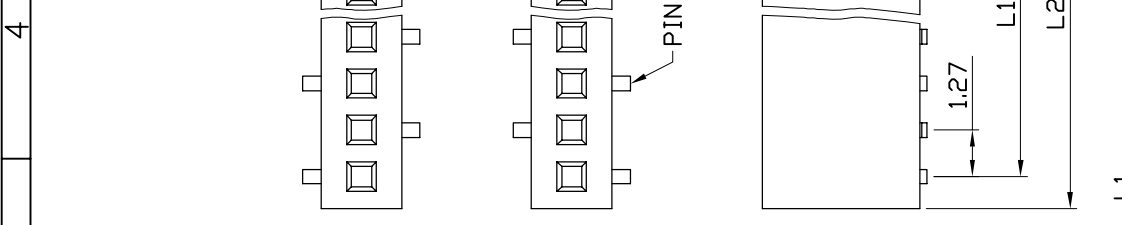
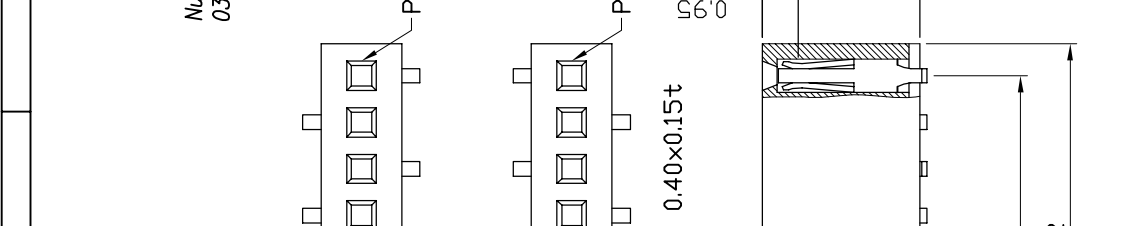
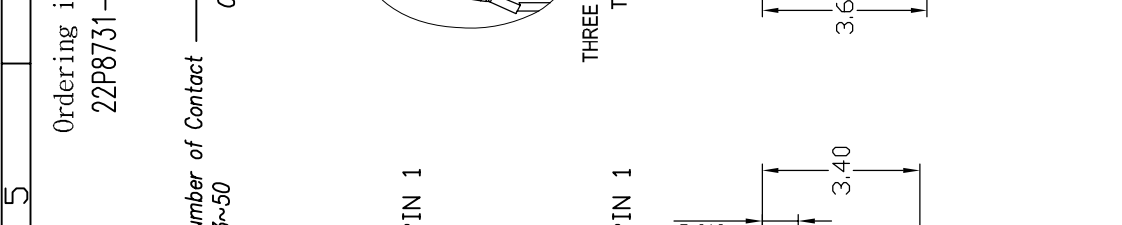
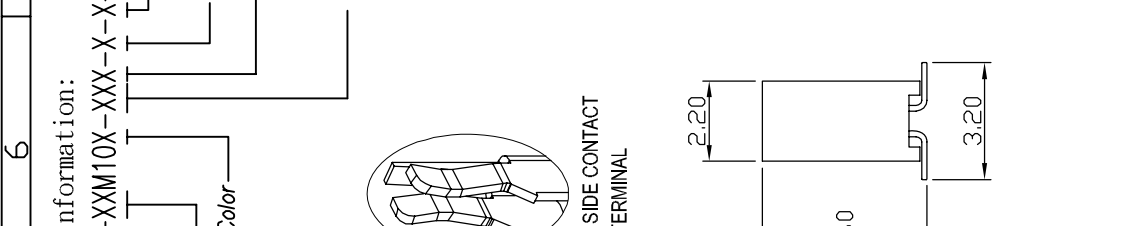
REV.	DESCRIPTION	DRW.	CHK.	APP.	DATE
A	RELEASE				

Ordering information:
 22P8731-XXM10X-XXX-X-X-A

Number of Contact
 03~50

Color

Ordering options:
 A Type A
 B Type B
 L LCP
 G Gold Plated
 T Tin Plated
 H Duplex plated
 Contact Plating
 01 Normal
 10 10.0" :
 :
 :



Dimension	mm
L1	2.54
L2	4.21
3	3.81
4	5.48
5	5.08
6	6.75
7	6.35
8	8.02
9	7.62
10	9.29
11	8.89
12	10.56
13	10.16
14	11.83
15	11.43
16	13.10
17	12.70
18	14.57
19	13.97
20	15.64
21	15.24
22	16.91
23	16.51
24	18.18
25	17.78
26	19.45
27	19.05
28	20.72
29	20.32
30	21.99
31	21.59
32	23.26
33	22.86
34	24.53
35	24.13
36	25.80
37	25.40
38	27.07
39	26.67
40	28.34
41	27.94
42	29.61
43	29.21
44	30.88
45	30.48
46	32.15
47	31.75
48	33.42
49	33.02
50	34.69
51	34.29
52	35.96
53	35.56
54	37.23
55	36.83
56	38.50
57	38.10
58	39.77
59	39.37
60	41.04
61	40.64
62	42.31
63	41.91
64	43.58
65	43.18
66	44.85
67	44.45
68	46.12
69	45.72
70	47.39
71	46.99
72	48.66
73	48.26
74	49.93
75	49.53
76	51.20
77	50.80
78	52.47
79	52.07
80	53.74
81	53.34
82	55.01
83	54.61
84	56.28
85	55.88
86	57.55
87	57.15
88	58.82
89	58.42
90	60.09
91	59.69
92	61.36
93	60.96
94	62.63
95	62.23
96	63.90

Ref.

ANGLES	±3°	SIZE	A4
LINEAR	0.0 ±0.38	SCALE	3:1
	0.00±0.25	SHEET	1/1

TITLE	1.27mm Female Header SMT Type	CHK.
PART NO	22P8731-XXM10X-XXX-X-X-A	
DRW NO		
UNIT	mm(INCH)	PROJECT

APP.	DR.	96.01.04
	KEN	

mm(INCH)	PROJECT	UNIT

PROJECT	UNIT	96.01.04

PROJECT	UNIT	96.01.04

PROJECT	UNIT	96.01.04

PROJECT	UNIT	96.01.04

SPECIFICATIONS

Current Rating:
 1 Amp

Insulator resistance:
 1000 Megohms Min.

Contact resistance:
 20 m ohms Max.

Dielectric withstanding:
 AC 500V/minute
 Operating Temperature:
 -40° ~ +105°C

Contact Material:
 Phosphor Bronze

Insulator Material:
 High Temperature Thermoplastic
 +Glass Fibre UL94V-0

Color: Black

Finish:
 Gold, Tin or Duplex plated
 Standard: Gold flash all over
 Duplex plated:
 Gold plated on contact area
 Tin on solder area

RoHS Compliance

REV.	DESCRIPTION	DRW.	CHK.	APP.	DATE
A	RELEASE				

