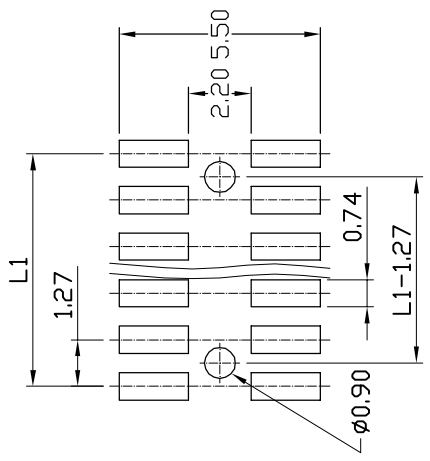


REV.	DESCRIPTION	DRW.	CHK.	APP.	DATE
A	RELEASE				

SPECIFICATIONS

Current Rating:
1 Amp
Insulator resistance:
1000 Megohms Min.
Contact resistance:
20 m ohms Max.
Dielectric withstanding:
AC 500V/minute
Operating Temperature:
-40° ~ +105°C
Contact Material:
Phosphor Bronze
Insulator Material:
High Temperature Thermoplastic
+Glass Fibre UL94V-0
Color: Black
Finish:
Gold, Tin or Duplex plated
Standard: Gold flash all over
Duplex plated:
Gold plated on contact area
Tin on solder area

RoHS Compliance



WITH LOCATING PEG

RECOMMENDED P. C. B. LAYOUT

Ordering information:
22P8702-XXMXXX-XXX-X

Number of Contact
06~A0(100)

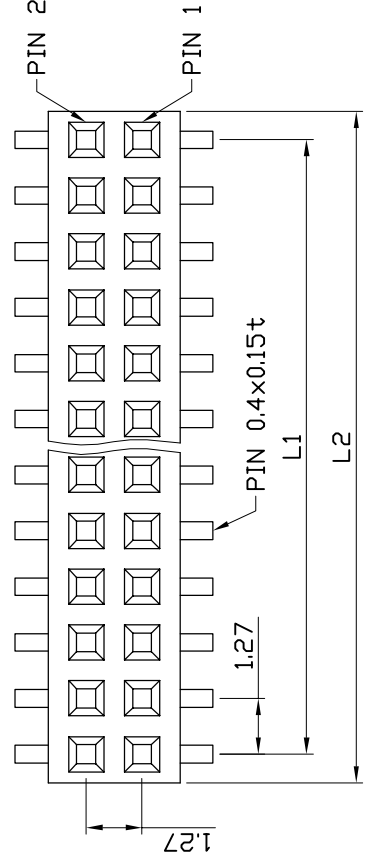
10 W/O Locating peg
OP with Locating peg

Color

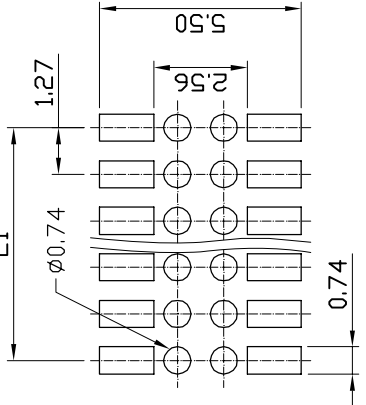
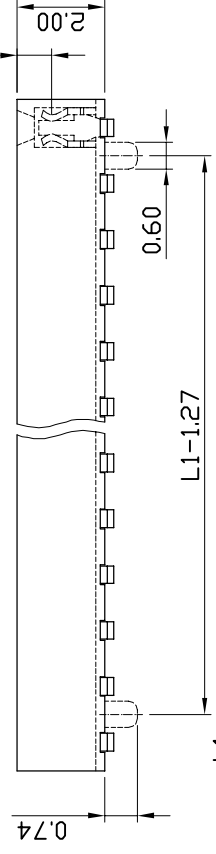
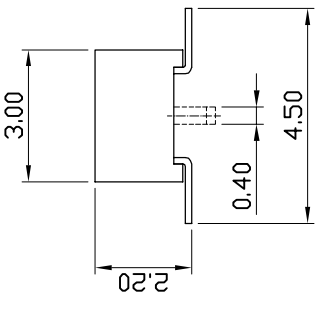
N Nylon-6T

G Gold Plated
T Tin Plated
H Duplex plated

Contact Plating
01 Normal
10 10µ"



THREE SIDE CONTACT
TERMINAL



W/O LOCATING PEG

Ref.

TITLE		APP.	ANGLES	±3°	SIZE
成品規格圖			LINEAR	0.0 ±0.38	A4
PART NO		CHK.	SCALE		
22P8702-XXMXXX-XXX-X			3:1		
DRW NO	DR.	PROJECT		SHEET	1/1
	KEN	96.01.04			
UNIT	mm(INCH)				
	5	6		7	8

