

REV.	DESCRIPTION	DRW.	CHK.	APP.	DATE
A	RELEASE				

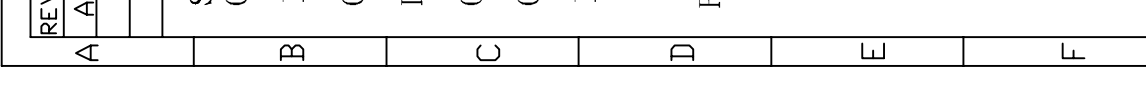
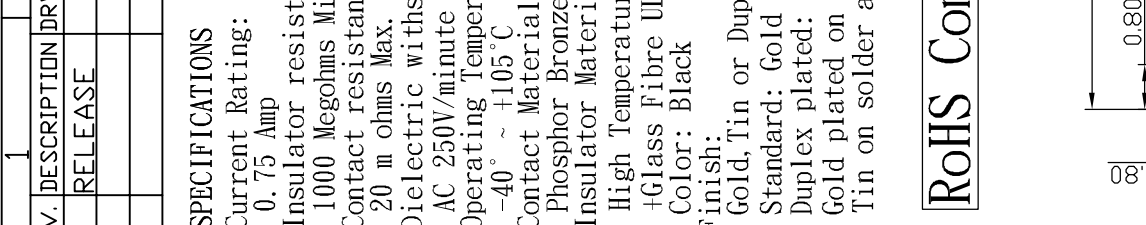
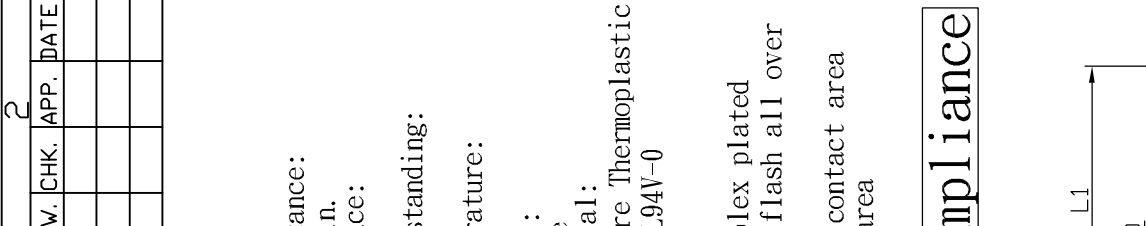
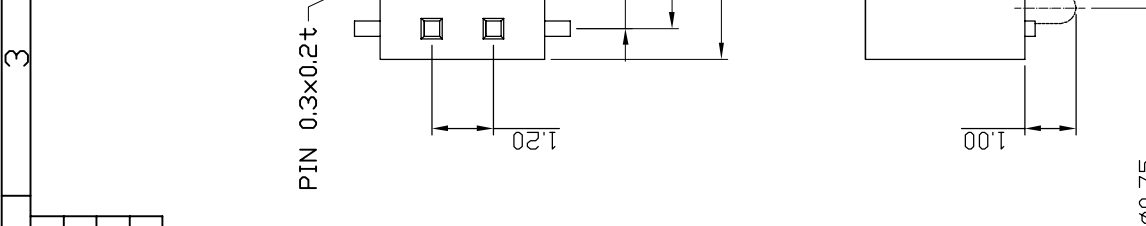
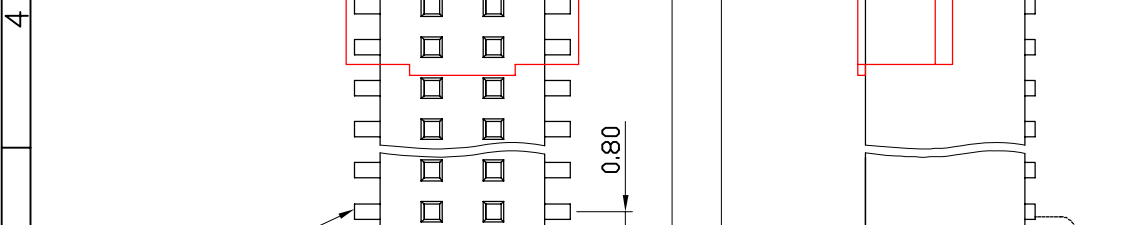
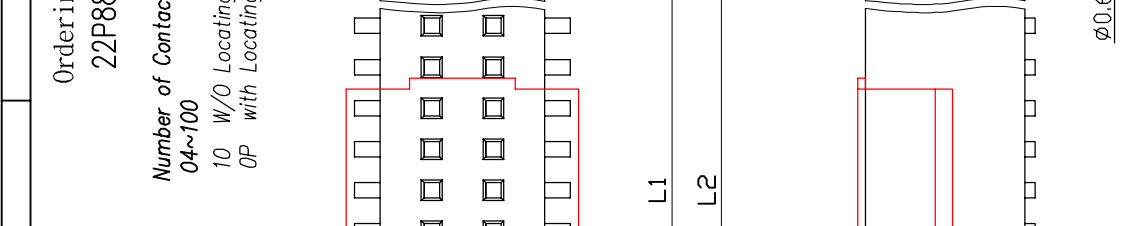
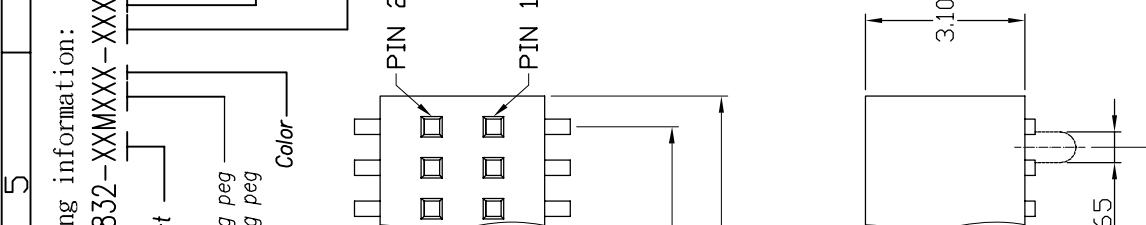
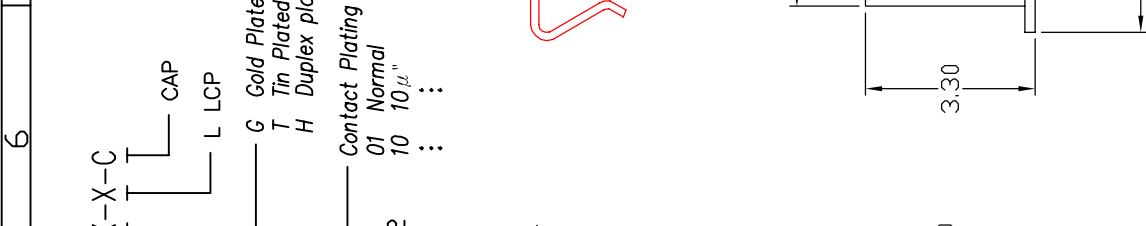
Ordering information:
 22P8832-XXMXXX-XXX-X-C

Number of Contact
 04~100
 10 W/O Locating peg
 0P with Locating peg

Color

Ordering information:
 CAP
 L LCP
 G Gold Plated
 T Tin Plated
 H Duplex plated

Contact Plating
 01 Normal
 10 10 μ "
 ..
 ..



SPECIFICATIONS
 Current Rating:
 0.75 Amp
 Insulator resistance:
 1000 Megohms Min.
 Contact resistance:
 20 m ohms Max.
 Dielectric withstanding:
 AC 250V/minute
 Operating Temperature:
 -40° ~ +105°C
 Contact Material:
 Phosphor Bronze
 Insulator Material:
 High Temperature Thermoplastic
 +Glass Fibre UL94V-0
 Color: Black
 Finish:
 Gold, Tin or Duplex plated
 Standard: Gold flash all over
 Duplex plated:
 Gold plated on contact area
 Tin on solder area

RoHS Compliance

RECOMMENDED P. C. B. LAYOUT

THREE SIDE CONTACT TERMINAL

Ref.

APP.	ANGLES	±3°	SIZE	A4
	LINEAR	0.0 ±0.38	SCALE	3:1
		0.00±0.25	SHEET	1/1

TITLE	0.8mm Female Header SMT Type	CHK.
	22P8832-XXMXXX-XXX-X-C	
DRW NO	DR.	KEN
UNIT	mm(INCH)	PROJECT
		96.01.04

