

1	2	3	4	5	6	7	8
REV. DESCRIPTION	DRW. CHK.	APP.	DATE				
A	RELEASE						

SPECIFICATIONS
 Current Rating: 3 Amp
 Insulator resistance: 5000 Megohms Min.
 Contact resistance: 20 m ohms Max.
 Dielectric withstanding: AC 1000V/minute
 Operating Temperature: -40° ~ +105°C
 Contact Material: BRASS
 Insulator Material: High Temperature Thermoplastic +Glass Fibre UL94V-0
 Color: Black
 Finish: Gold, Tin or Duplex plated
 Standard: Gold flash all over
 Duplex plated:
 Gold plated on contact area
 Tin on solder area

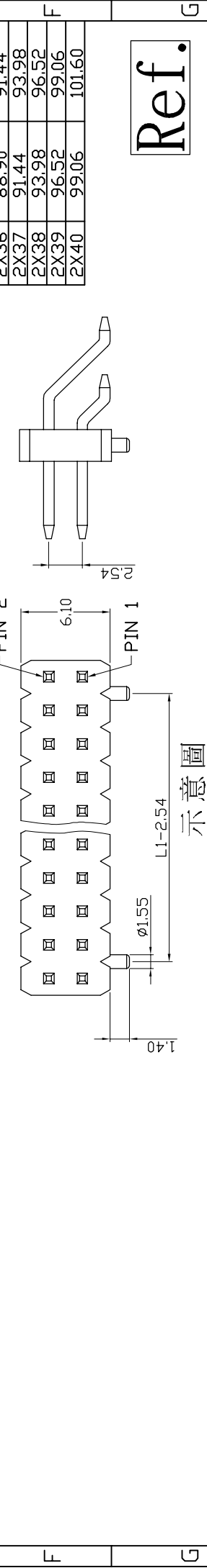
ORDERING INFORMATION
 21X22664-XXXXXX-XXX-XXX-XXX

Material: B PBT, N Nylon-6T, L LCP
 Row of plastic Double Row
 Plastic Height: 6.10mm
 Squite & Pitch: 0.64sq x PH2.54x2.54mm
 Number of Contact: 04-80
 Exterior: Referenced Sheet 3/3

Adjunctive Code Referenced Sheet 2/3
 Dimension: 6, 6/3, 6/3/1.5, A/B, A/B/C
 Plating Type: G Gold Plated, T Tin Plated, H Duplex Plated
 Contact Plating: 01 Normal, 03 3µ", 05 5µ", 10 10µ"

Color: B Black, R Red, U Blue, ...

RoHS Compliance



成品規格圖		APP.			
TITLE	2.54x2.54mm Pin Header 22664 Series	CHK.			
PART NO	21X22664-XXXXXX-XXX-XXX-XXX	DR.	KEN		
UNIT	mm(INCH)	PROJECT	96.01.04		
		ANGLES	±3°	SIZE	A4
		LINEAR	0.0 ±0.38	SCALE	NONE
			0.00±0.25	SHEET	1/3

Ref.

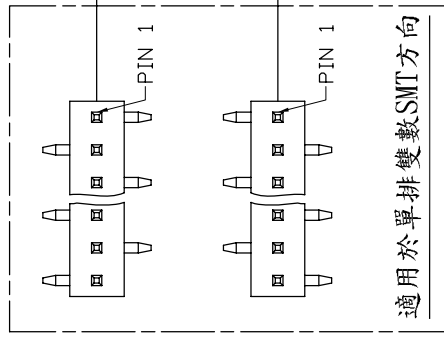
A B C D E F G H

1 2 3 4 5 6 7 8

REV.	DESCRIPTION	DRW.	CHK.	APP.	DATE
A	RELEASE				

ADJUNCTIVE CODE

21X22664-XXXXXX-XXX-XXX-**A B C E F M S X Y Z K VRWN HXX PX**



加 CAP

加 圓片端子

加 WAFER

加 Mini Jumper

彎角 or SMT+DIP

CUTTER

塑膠彩色印刷

高低針

跳PIN

成品兩側打Kink

磷銅端子

紅銅端子

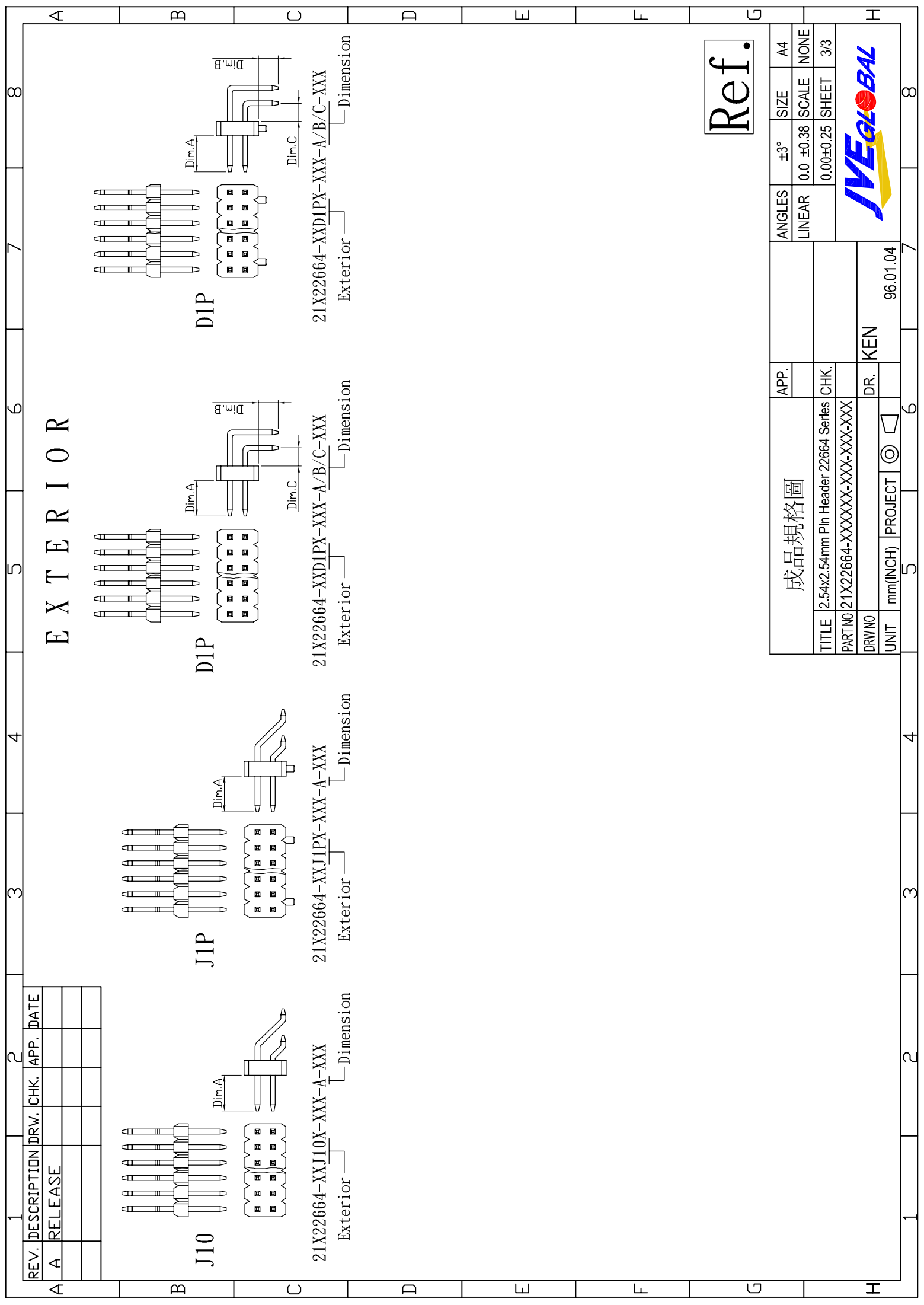
Ref.

成品規格圖		APP.	ANGLES	±3°	SIZE	A4
TITLE	2.54x2.54mm Pin Header 22664 Series	CHK.	LINEAR	0.0 ±0.38	SCALE	NONE
PART NO	21X22664-XXXXXX-XXX-XXX-XXX			0.00±0.25	SHEET	2/3
DRW NO		DR.	KEN			
UNIT	mm(INCH)	PROJECT	96.01.04			

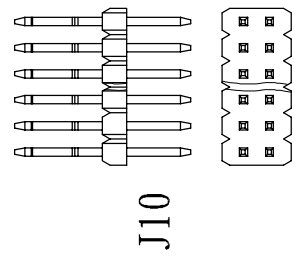


A B C D E F G H

1 2 3 4 5 6 7 8



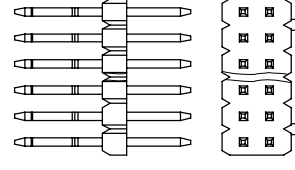
REV.	DESCRIPTION	DRW.	CHK.	APP.	DATE
A	RELEASE				



J10

21X22664-XXJ10X-XXX-A-XXX

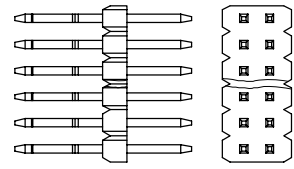
Exterior Dimension



J1P

21X22664-XXJ1PX-XXX-A-XXX

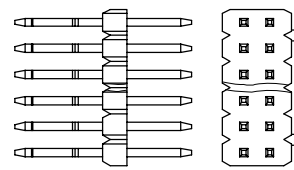
Exterior Dimension



DIP

21X22664-XXDIPX-XXX-A/B/C-XXX

Exterior Dimension



DIP

21X22664-XXDIPX-XXX-A/B/C-XXX

Exterior Dimension

Ref.

成品規格圖		APP.	ANGLES	±3°	SIZE	A4
TITLE	2.54x2.54mm Pin Header 22664 Series	CHK.	LINEAR	0.0 ±0.38	SCALE	NONE
PART NO	21X22664-XXXXXX-XXX-XXX-XXX			0.00±0.25	SHEET	3/3
DRW NO		DR.	KEN			
UNIT	mm(INCH)	PROJECT	96.01.04			

