

REV.	DESCRIPTION	DRW.	CHK.	APP.	DATE
A	RELEASE				

**SPECIFICATIONS**

Current Rating:  
3 Amp

Insulator resistance:  
5000 Megohms Min.

Contact resistance:  
20 m ohms Max.

Dielectric withstanding:  
AC 1000V/minute

Operating Temperature:  
-40° ~ +105°C

Contact Material:  
BRASS

Insulator Material:  
High Temperature Thermoplastic  
+Glass Fibre UL94V-0

Color: Black

Finish:  
Gold, Tin or Duplex plated  
Standard: Gold flash all over  
Duplex plated:  
Gold plated on contact area  
Tin on solder area

**RoHS Compliance**

**ORDERING INFORMATION**

21X22564-XXXXXX-XXX-XXX-XXX

Material  
B PBT  
N Nylon-6T  
L LCP

Row of plastic  
Double Row

Plastic Height  
2.54mm

Spalte & Pitch  
0.64sq x PH2.54x2.54mm

Number of Contact  
04-80

Exterior  
Referenced Sheet 3/7, 4/7, 5/7, 6/7, 7/7

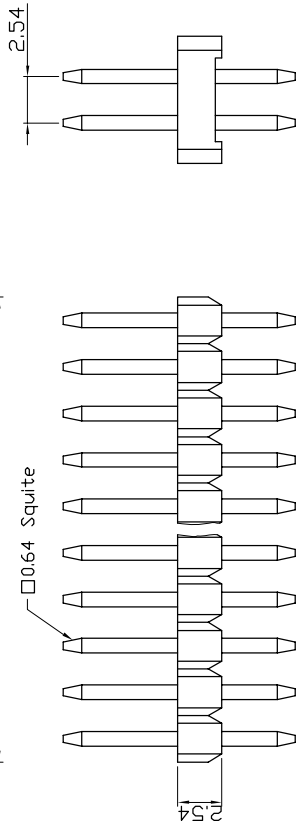
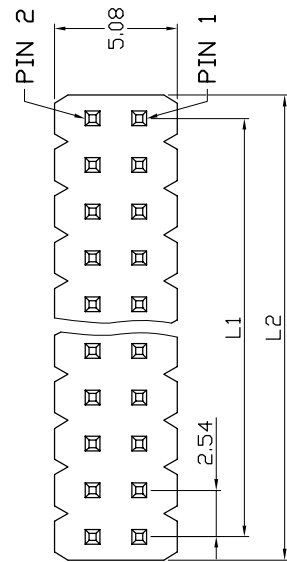
Adjunctive Code  
Referenced Sheet 2/7

Dimension  
6  
6/3  
6/3/1.5

Plating Type  
A  
A/B  
A/B/C

Contact Plating  
G Gold Plated  
T Tin Plated  
H Duplex Plated

Color  
B Black  
R Red  
U Blue  
: :  
: :



示意圖

Ref.

Cir-cuits	Dimension mm	
	L1	L2
2X2	2.54	5.08
2X3	5.08	7.62
2X4	7.62	10.16
2X5	10.16	12.70
2X6	12.70	15.24
2X7	15.24	17.78
2X8	17.78	20.32
2X9	20.32	22.86
2X10	22.86	25.40
2X11	25.40	27.94
2X12	27.94	30.48
2X13	30.48	33.02
2X14	33.02	35.56
2X15	35.56	38.10
2X16	38.10	40.64
2X17	40.64	43.18
2X18	43.18	45.72
2X19	45.72	48.26
2X20	48.26	50.80
2X21	50.80	53.34
2X22	53.34	55.88
2X23	55.88	58.42
2X24	58.42	60.96
2X25	60.96	63.50
2X26	63.50	66.04
2X27	66.04	68.58
2X28	68.58	71.12
2X29	71.12	73.66
2X30	73.66	76.20
2X31	76.20	78.74
2X32	78.74	81.28
2X33	81.28	83.82
2X34	83.82	86.36
2X35	86.36	88.90
2X36	88.90	91.44
2X37	91.44	93.98
2X38	93.98	96.52
2X39	96.52	99.06
2X40	99.06	101.60

APP.	SIZE	A4
ANGLES	±3°	SCALE
LINEAR	0.0 ±0.38	SHEET
	0.00±0.25	17

TITLE 2.54x2.54mm Pin Header 22564 Series

PART NO 21X22564-XXXXXX-XXX-XXX-XXX

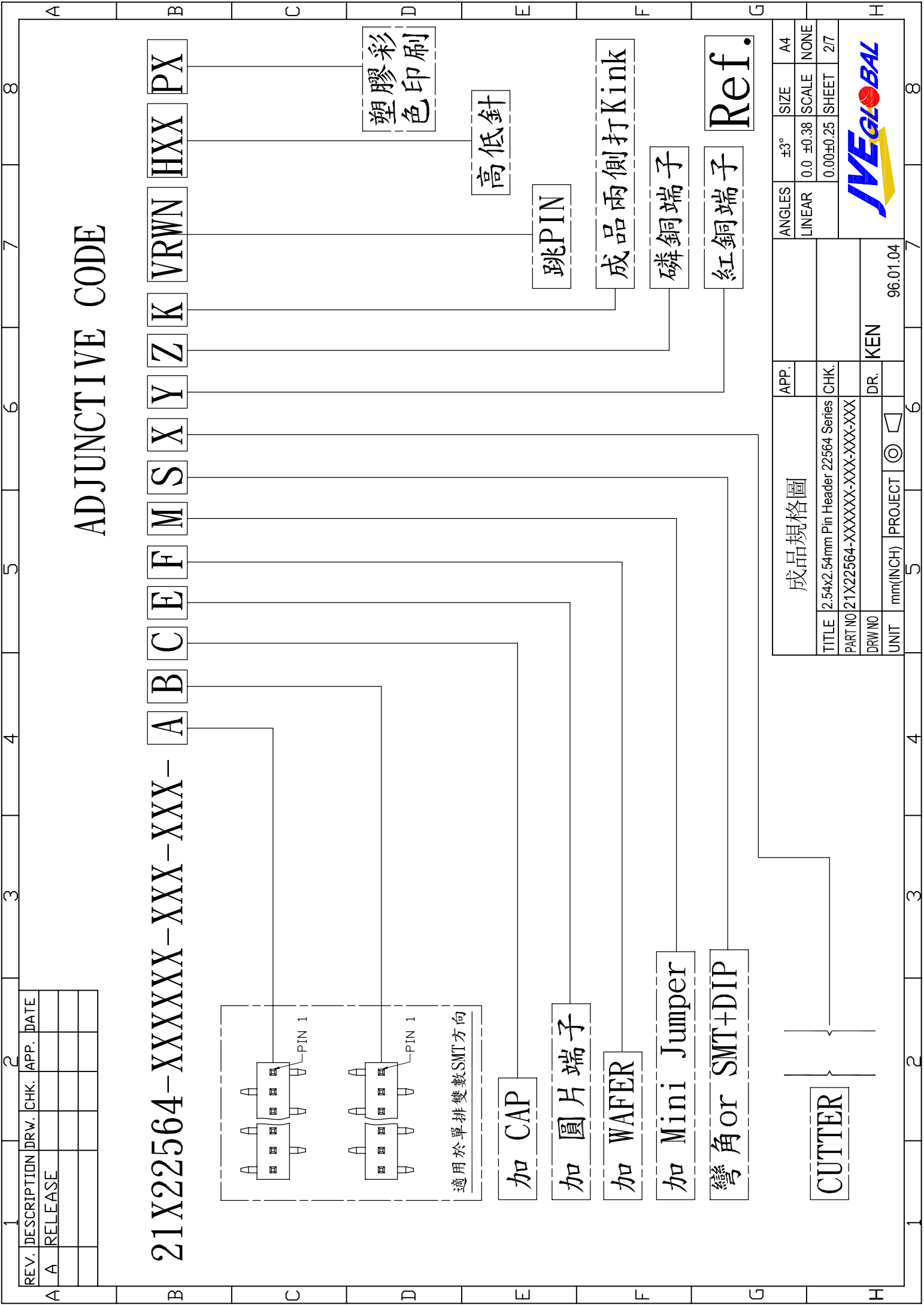
DRW NO

UNIT mm(INCH) PROJECT

DR. KEN

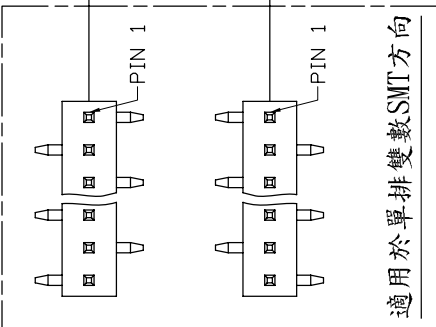
96.01.04





# ADJUNCTIVE CODE

21X22564-XXXXXX-XXX-XXX-ABCDEFMSXYZKVRWNHXXPX



加 CAP

加圓片端子

加 WAFER

加 Mini Jumper

彎角 or SMT+DIP

CUTTER

塑膠彩色印刷

高低針

跳PIN

成品兩側打Kink

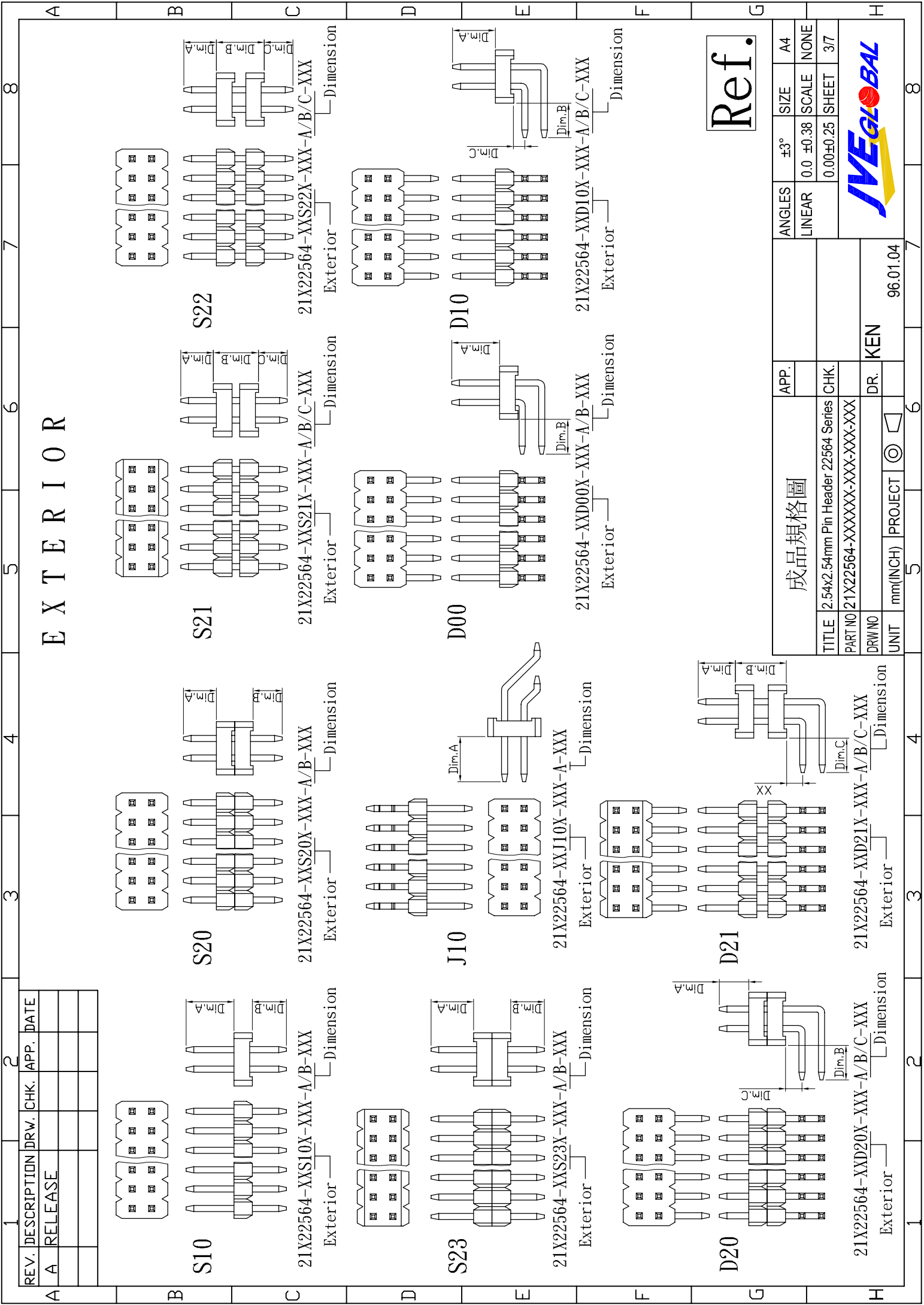
磷銅端子

紅銅端子

Ref.

成品規格圖		APP.	ANGLES	±3°	SIZE	A4
TITLE	2.54x2.54mm Pin Header 22564 Series	CHK.	LINEAR	0.0 ±0.38	SCALE	NONE
PART NO	21X22564-XXXXXX-XXX-XXX-XXX			0.00±0.25	SHEET	2/7
DRW NO		DR.	KEN			
UNIT	mm(INCH)	PROJECT				96.01.04





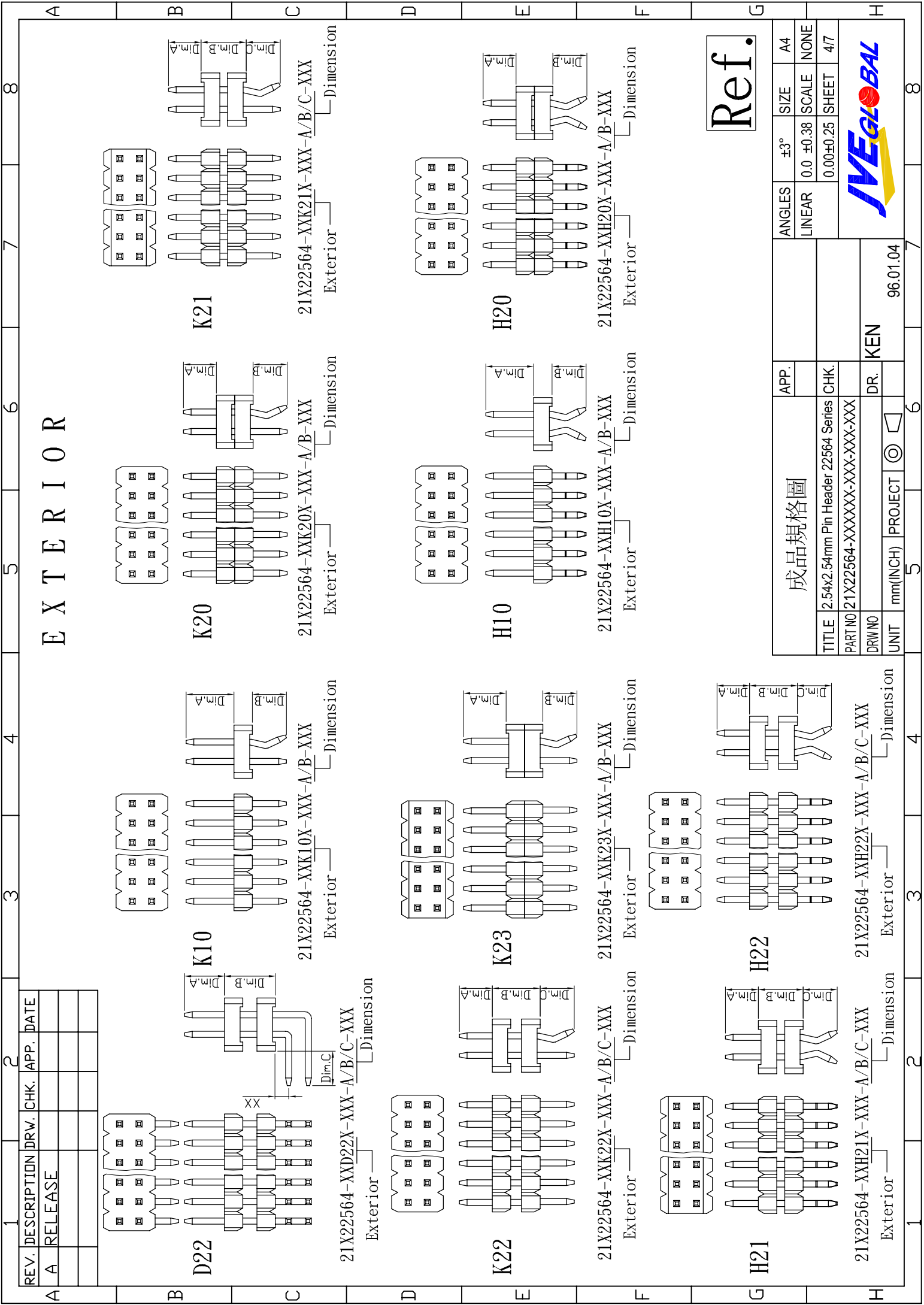
# E X T E R I O R

REV.	DESCRIPTION	DRW.	CHK.	APP.	DATE
A	RELEASE				

Ref.

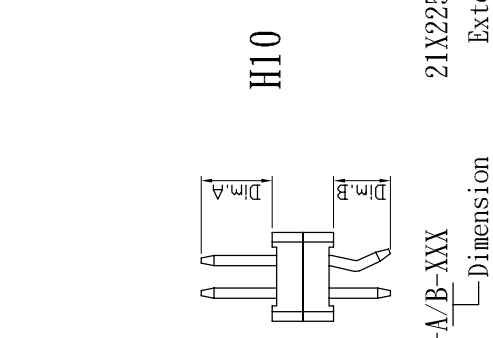
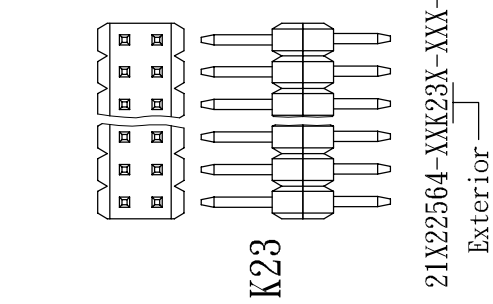
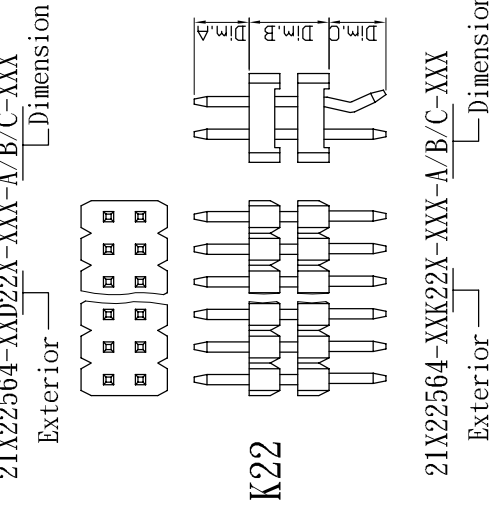
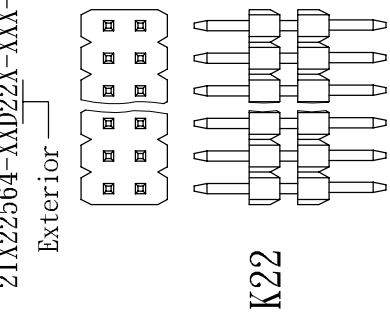
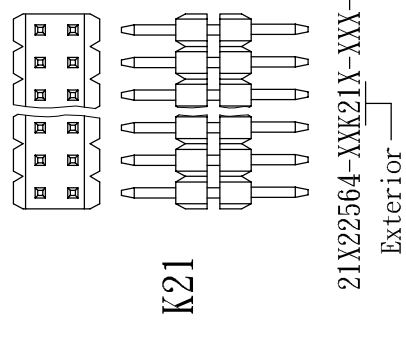
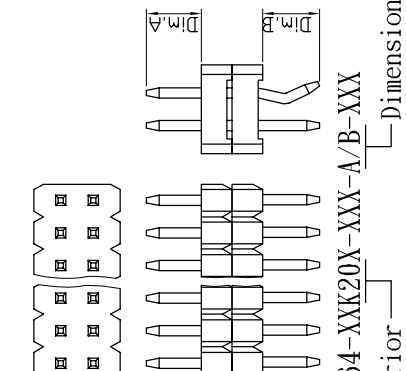
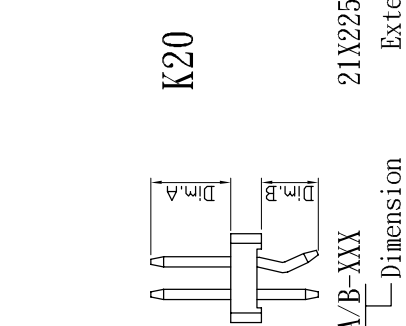
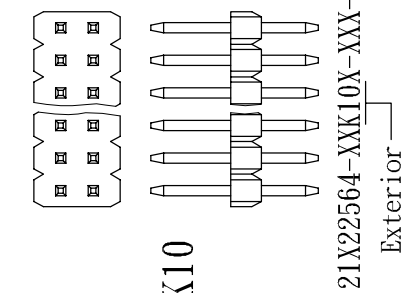
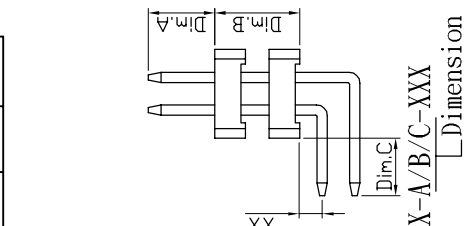
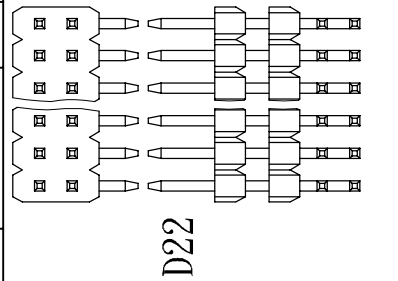
成品規格圖		APP.	ANGLES	±3°	SIZE	A4
TITLE	2.54x2.54mm Pin Header 22564 Series	CHK.	LINEAR	0.0	±0.38	NONE
PART NO	21X22564-XXX-XXX-XXX-XXX-XXX-XXX				0.00±0.25	3/7
DRW/NO		DR.	KEN			
UNIT	mm(INCH)	PROJECT				
						96.01.04





# E X T E R I O R

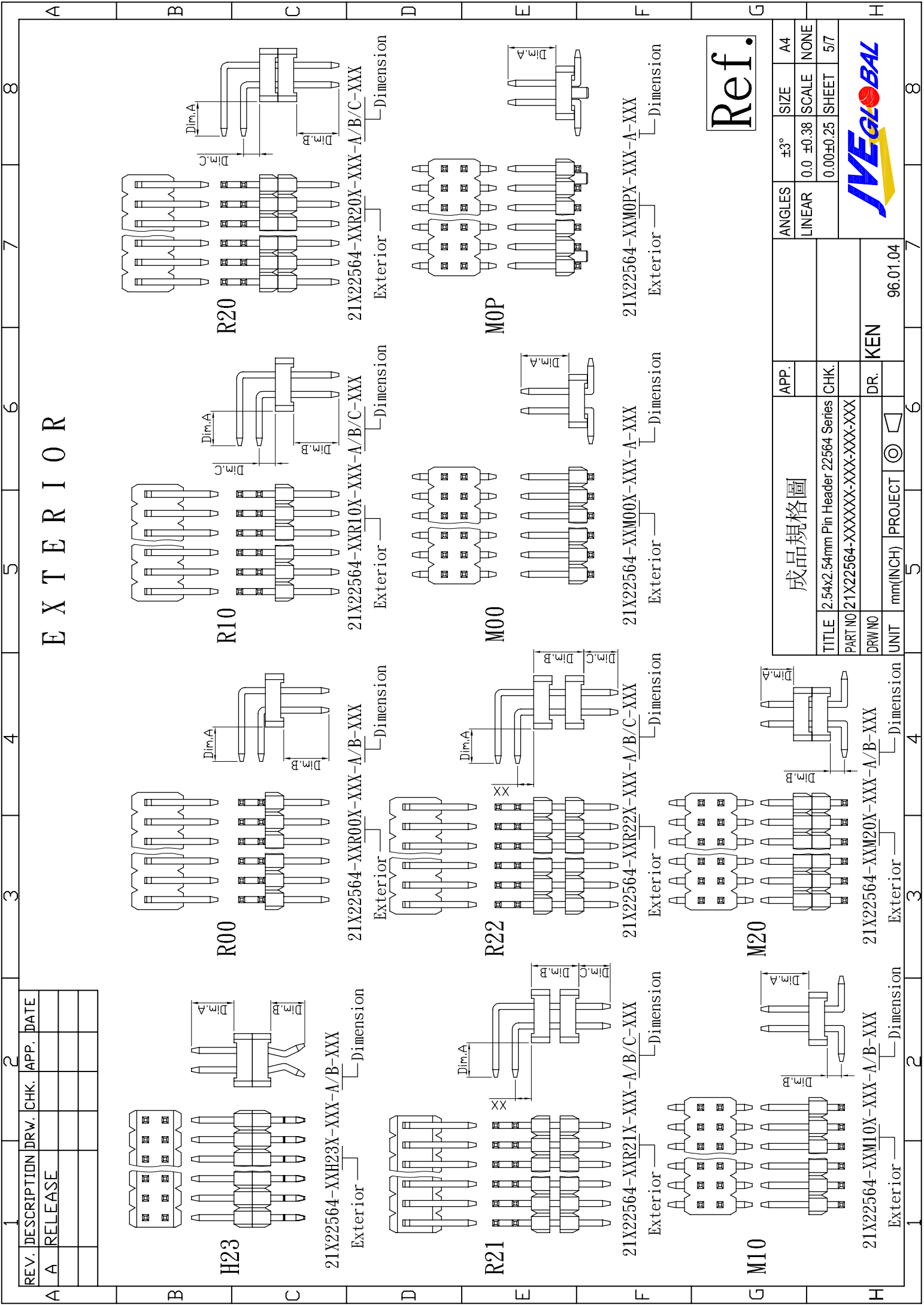
REV.	DESCRIPTION	DRW.	CHK.	APP.	DATE
A	RELEASE				



Ref.

成品規格圖		APP.	ANGLES	±3°	SIZE	A4
TITLE	2.54x2.54mm Pin Header 22564 Series	CHK.	LINEAR	0.0	±0.38	NONE
PART NO	21X22564-XXXXXX-XXX-XXX-XXX			0.00	±0.25	4/7
DRW NO		DR.				
UNIT	mm(INCH)	PROJECT				
		KEN				
		96.01.04				





# E X T E R I O R

REV.	DESCRIPTION	DRW.	CHK.	APP.	DATE
A	RELEASE				

Ref.

成品規格圖		APP.	ANGLES	±3°	SIZE	A4		
TITLE	2.54x2.54mm Pin Header 22564 Series		LINEAR	0.0	±0.38	SCALE	NONE	
PART NO	21X22564-XXXXXX-A/B/C-XXX		CHK.				SHEET	5/7
DRW NO			DR.	KEN			PROJECT	96.01.04
UNIT	mm(INCH)	PROJECT					5	7

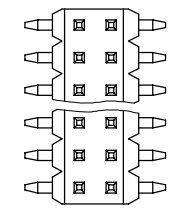


1 2 3 4 5 6 7 8

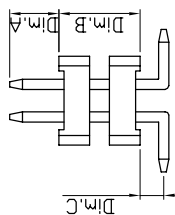
A B C D E F G H

**E X T E R I O R**

REV.	DESCRIPTION	DRW.	CHK.	APP.	DATE
A	RELEASE				

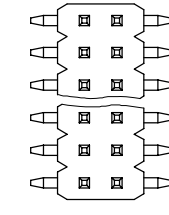


**M21**

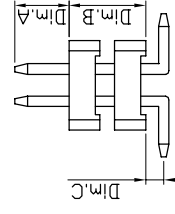


21X22564-XXM21X-XXX-A/B-C-XXX

Exterior Dimension

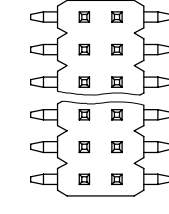


**M22**

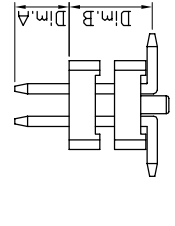


21X22564-XXM22X-XXX-A/B/C-XXX

Exterior Dimension

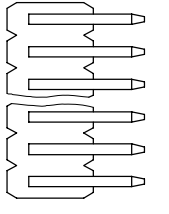


**M2P**

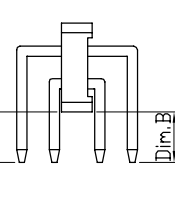


21X22564-XXM2PX-XXX-A/B-XXX

Exterior Dimension

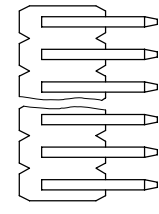


**C00**

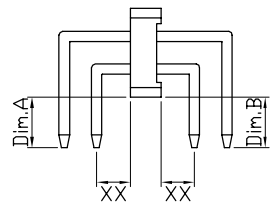


21X22564-XXC00X-XXX-A/B-XXX

Exterior Dimension

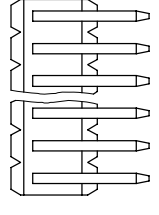


**C10**

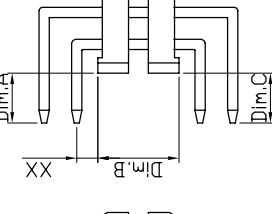


21X22564-XXC10X-XXX-A/B-XXX

Exterior Dimension

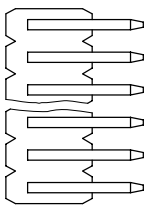


**C21**

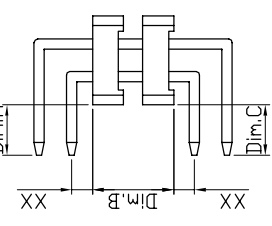


21X22564-XXC21X-XXX-A/B/C-XXX

Exterior Dimension

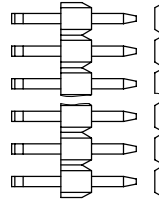


**C22**

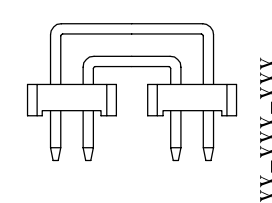


21X22564-XXC22X-XXX-A/B/C-XXX

Exterior Dimension



**C26**



21X22564-XXC26X-XXX-XXX-XXX

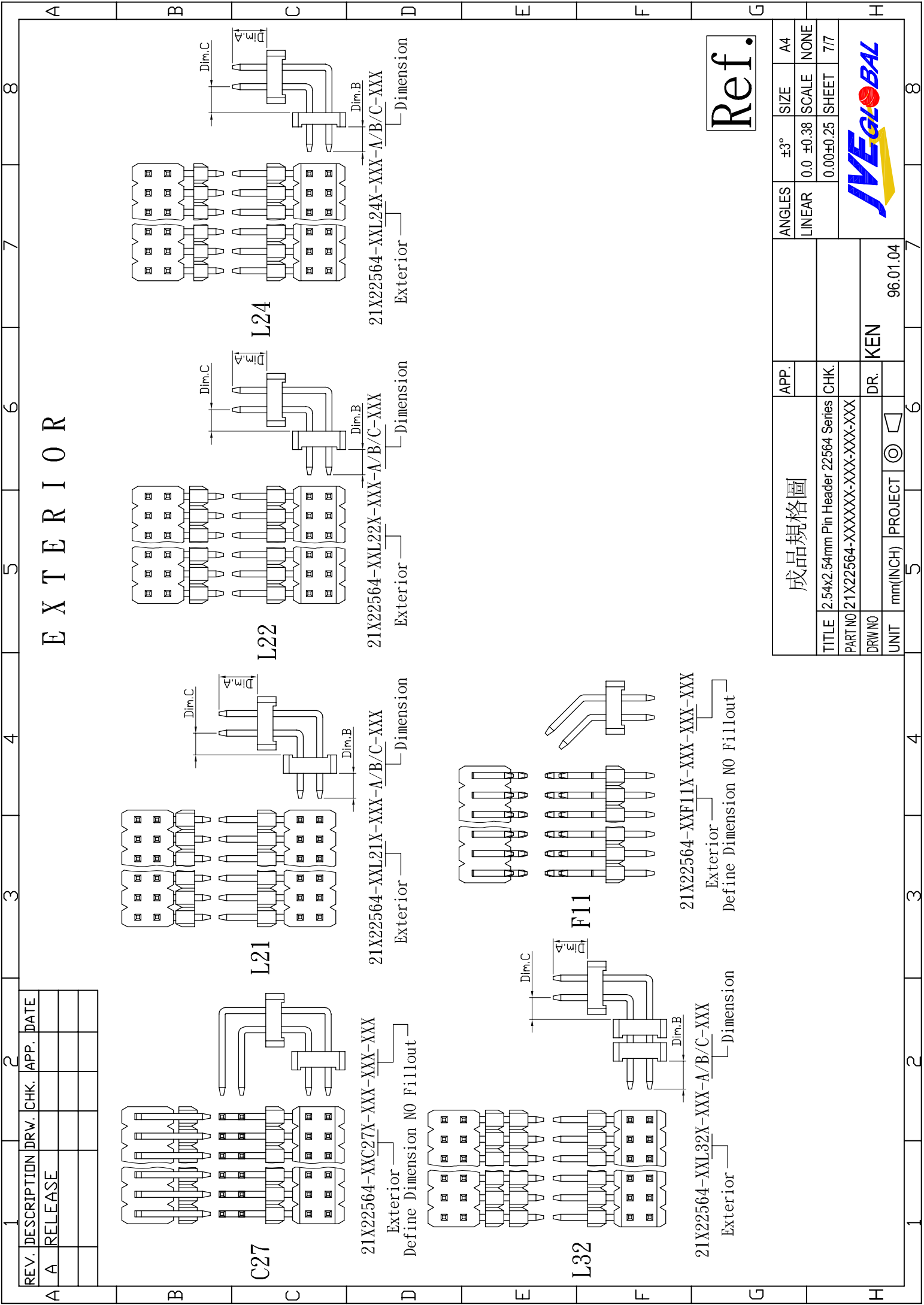
Exterior Define Dimension NO Fillout

**Ref.**

成品規格圖		APP.	ANGLES	±3°	SIZE	A4
TITLE	2.54x2.54mm Pin Header 22564 Series	CHK.	LINEAR	0.0 ±0.38	SCALE	NONE
PART NO	21X22564-XXXXXX-XXX-XXX-XXX			0.00±0.25	SHEET	6/7
DRW NO		DR.	KEN			
UNIT	mm(INCH)	PROJECT	96.01.04			



1 2 3 4 5 6 7 8



**E X T E R I O R**

REV.	DESCRIPTION	DRW.	CHK.	APP.	DATE
A	RELEASE				

**C27**

Exterior  
Define Dimension NO Fillout

21X22564-XXC27X-XXX-XXX-XXX

**L21**

Exterior

21X22564-XXL21X-XXX-A/B/C-XXX

**L22**

Exterior

21X22564-XXL22X-XXX-A/B/C-XXX

**L24**

Exterior

21X22564-XXL24X-XXX-A/B/C-XXX

**L32**

Exterior

21X22564-XXL32X-XXX-A/B/C-XXX

**F11**

Exterior  
Define Dimension NO Fillout

21X22564-XXF11X-XXX-XXX-XXX

**Ref.**

成品規格圖		APP.	ANGLES	±3°	SIZE	A4
		2.54x2.54mm Pin Header 22564 Series	LINEAR	0.0 ±0.38	SCALE	NONE
TITLE		CHK.	0.00±0.25		SHEET	7/7
PART NO		DR.	KEN		96.01.04	
DRW/NO		PROJECT	mm(INCH)		5 6 7 8	

