

REV.	DESCRIPTION	DRW.	CHK.	APP.	DATE
A	RELEASE				

### SPECIFICATIONS

Current Rating:  
3 Amp

Insulator resistance:  
5000 Megohms Min.

Contact resistance:  
20 m ohms Max.

Dielectric withstanding:  
AC 1000V/minute

Operating Temperature:  
-40° ~ +105°C

Contact Material:  
BRASS

Insulator Material:  
High Temperature Thermoplastic  
+Glass Fibre UL94V-0

Color: Black

Finish:  
Gold, Tin or Duplex plated

Standard: Gold flash all over  
Duplex plated:  
Gold plated on contact area  
Tin on solder area

## RoHS Compliance

### ORDERING INFORMATION

#### 21X12564-XXXXXX-XXX-XXX-XXX

Material  
B PBT  
N Nylon-6T  
L LCP

Row of plastic  
Single Row

Plastic Height  
2.54mm

Splice & Pitch  
0.64sq x PH2.54mm

Number of Contact  
02-40

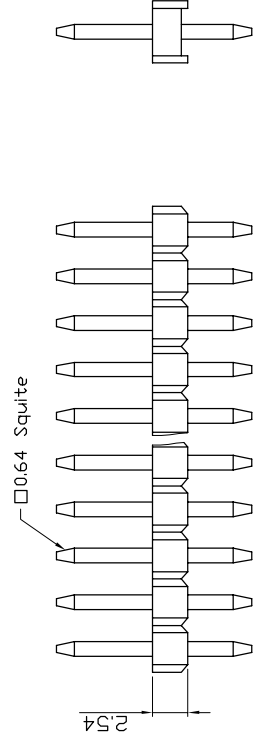
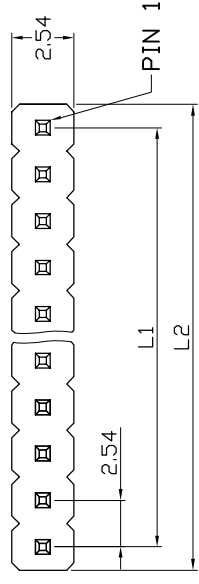
Exterior  
Referenced Sheet 3/6, 4/6, 5/6, 6/6

Adjunctive Code  
Referenced Sheet 2/6

Dimension  
A  
6/3 A/B  
6/3/1.5 A/B/C

Plating Type  
G Gold Plated  
T Tin Plated  
H Duplex Plated

Contact Plating  
01 Normal  
03 3μ"  
05 5μ"  
10 10μ"  
: : Color  
B Black  
R Red  
U Blue  
: :



示意圖

# Ref.

Cir-cuits	Dimension mm
1	L1
2	L2
3	2.54
4	5.08
5	7.62
6	10.16
7	12.70
8	15.24
9	17.78
10	20.32
11	22.86
12	25.40
13	27.94
14	30.48
15	33.02
16	35.56
17	38.10
18	40.64
19	43.18
20	45.72
21	48.26
22	50.80
23	53.34
24	55.88
25	58.42
26	60.96
27	63.50
28	66.04
29	68.58
30	71.12
31	73.66
32	76.20
33	78.74
34	81.28
35	83.82
36	86.36
37	88.90
38	91.44
39	93.98
40	96.52
41	99.06
42	101.60

APP.	ANGLES	±3°	SIZE	A4
成品規格圖	LINEAR	0.0	±0.38	NONE
TITLE 2.54mm Pin Header 12564 Series	CHK.	0.00±0.25	SHEET	1/6
PART NO 21X12564-XXXXXX-XXX-XXX-XXX	DR.	KEN		
UNIT mm(INCH)	PROJECT	96.01.04		



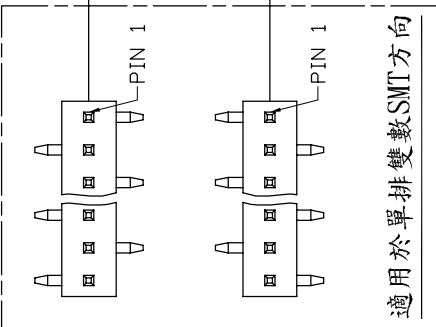
A B C D E F G H

1 2 3 4 5 6 7 8

REV.	DESCRIPTION	DRW.	CHK.	APP.	DATE
A	RELEASE				

# ADJUNCTIVE CODE

21X12564-XXXXXX-XXX-XXX- A B C E F M S X Y Z K VRWN HXX PX



適用於單排雙數SMT方向

加 CAP

加 圓片 端子

加 WAFER

加 Mini Jumper

彎角 or SMT+DIP

CUTTER

塑膠彩色印刷

高低針

跳PIN

成品兩側打Kink

磷銅端子

紅銅端子

Ref.

## 成品規格圖

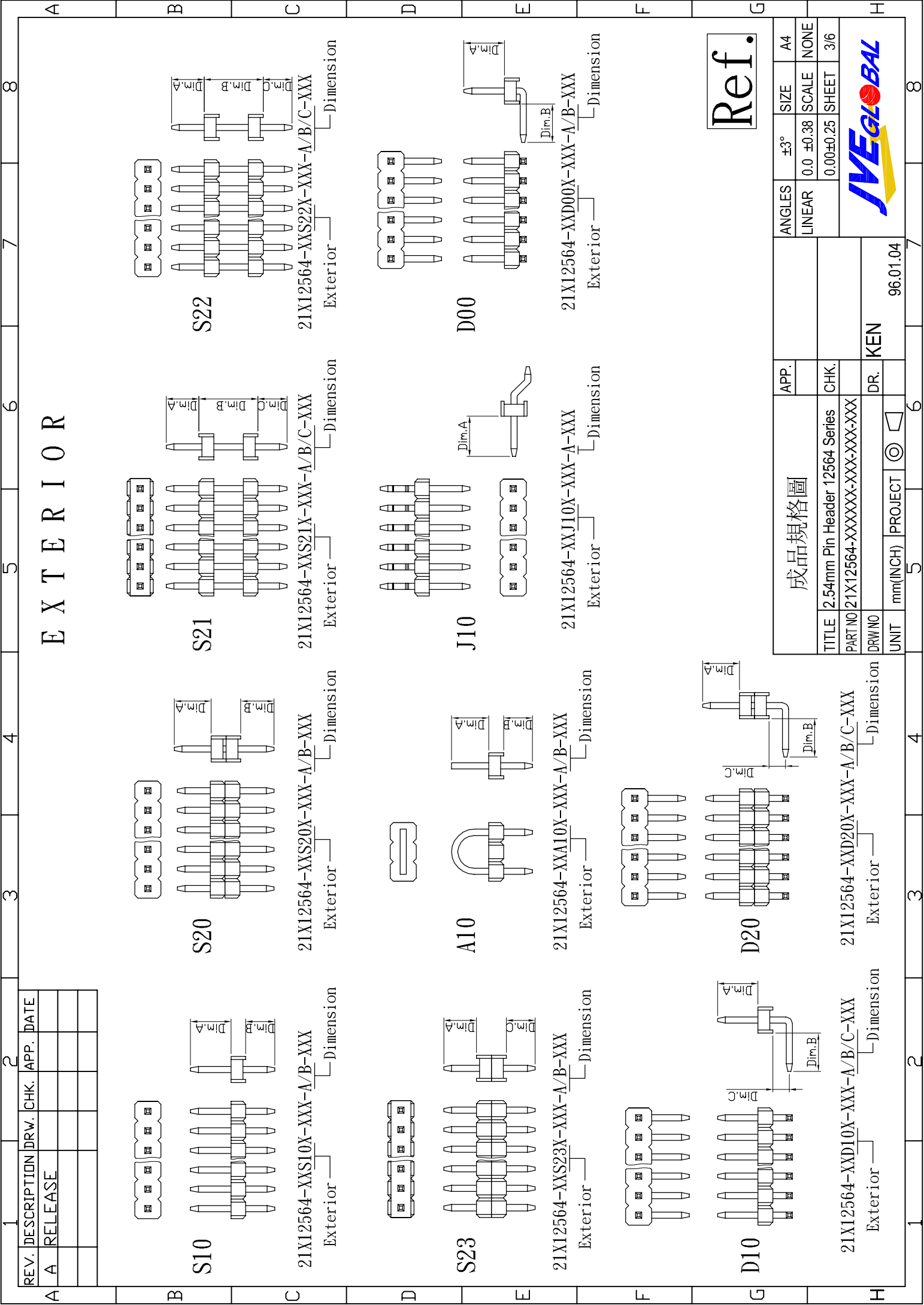
TITLE	2.54mm Pin Header 12564 Series	CHK.	
PART NO	21X12564-XXXXXX-XXX-XXX-XXX	DR.	KEN
UNIT	mm(INCH)	PROJECT	96.01.04

ANGLES	±3°	SIZE	A4
LINEAR	0.0 ±0.38	SCALE	NONE
	0.00±0.25	SHEET	2/6



A B C D E F G H

1 2 3 4 5 6 7 8

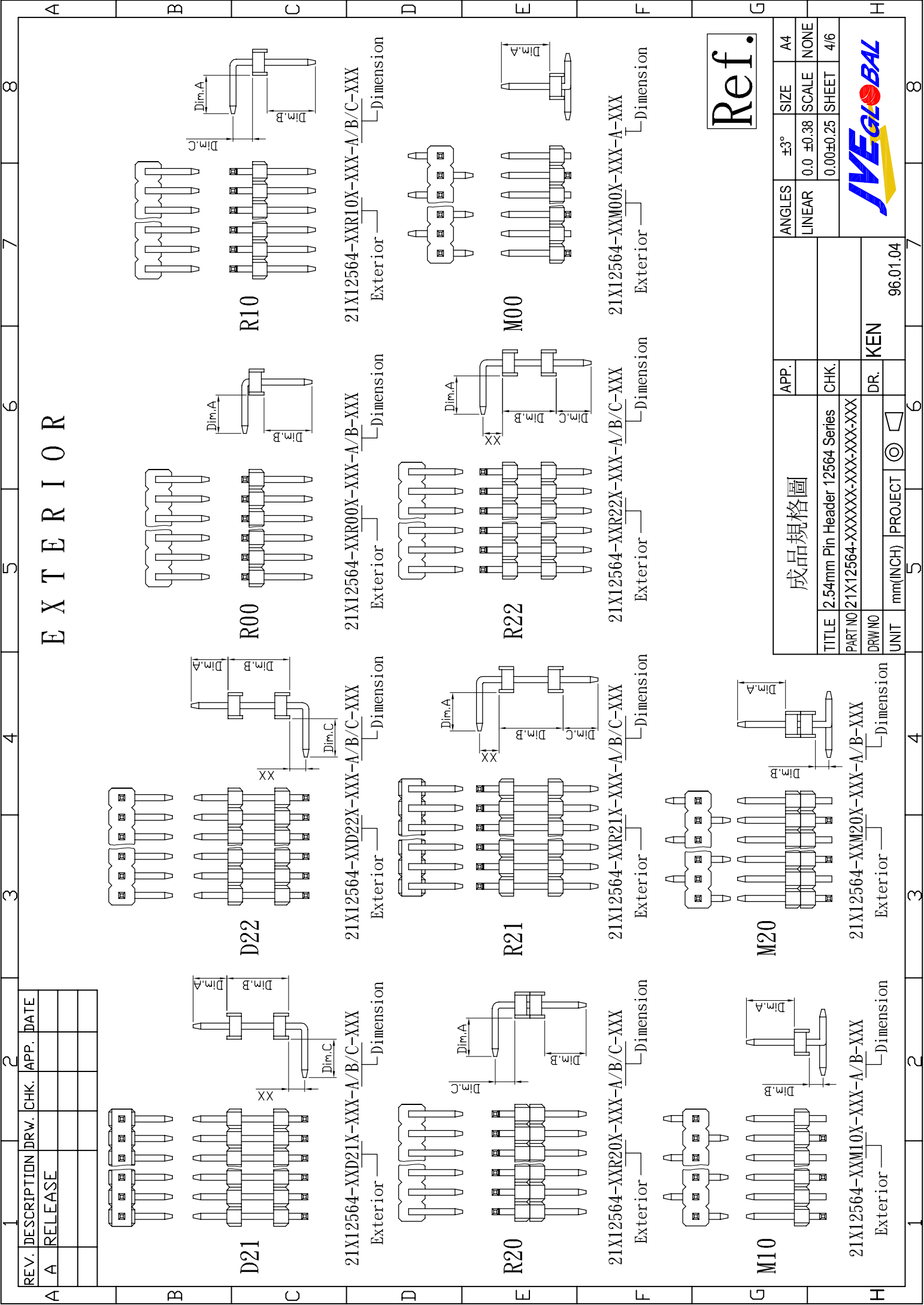


REV.	DESCRIPTION	DRW.	CHK.	APP.	DATE
A	RELEASE				

Ref.

成品規格圖		APP.	ANGLES	±3°	SIZE	A4
TITLE	2.54mm Pin Header 12564 Series	CHK.	LINEAR	0.0	±0.38	NONE
PART NO	21X12564-XXXXXX-XXX-XXX-XXX			0.00	±0.25	3/6
DRW NO		DR.	KEN			
UNIT	mm(INCH)	PROJECT	96.01.04			





# EXTERIOR

REV.	DESCRIPTION	DRW.	CHK.	APP.	DATE
A	RELEASE				

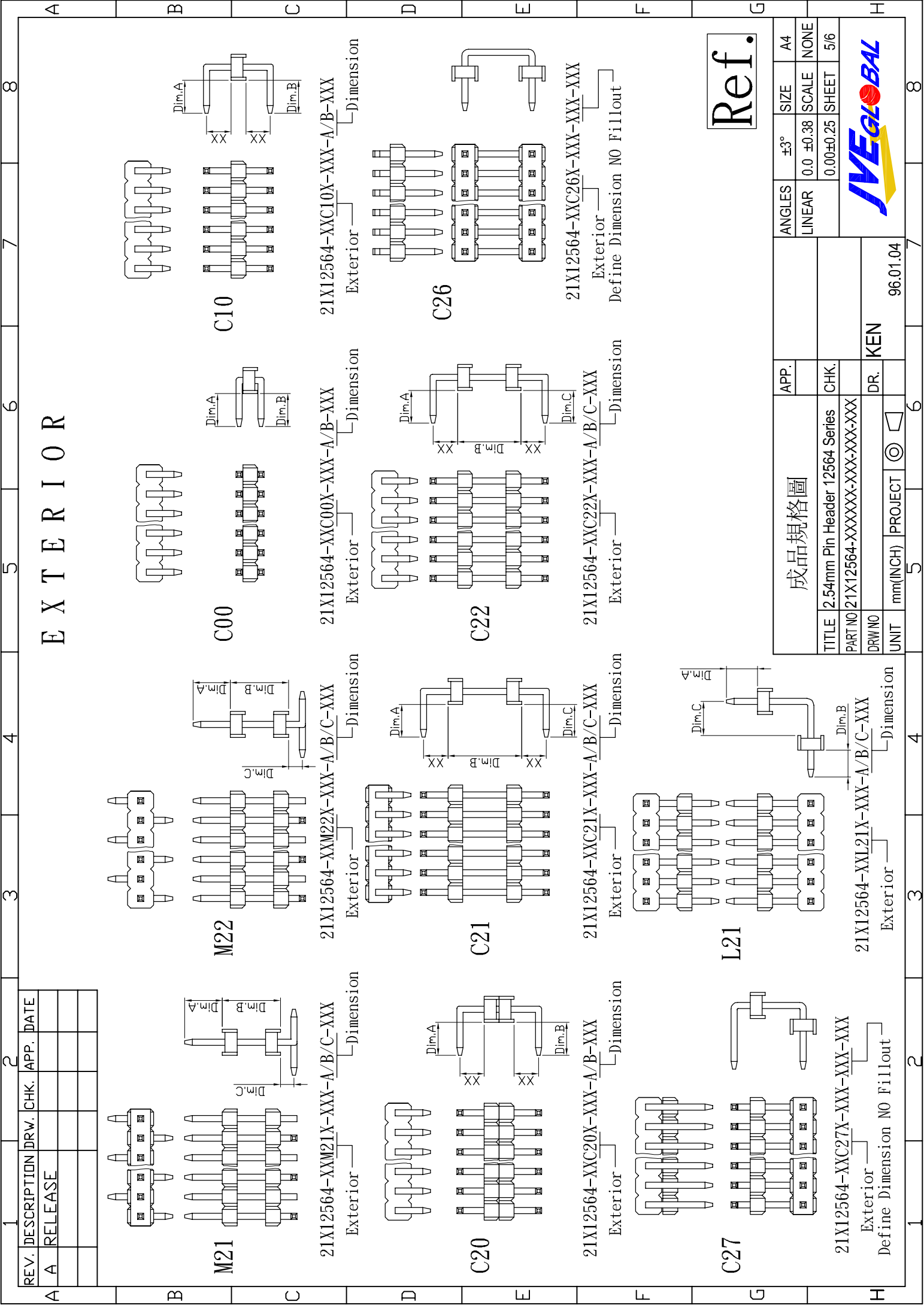
Ref.

成品規格圖		APP.	ANGLES	±3°	SIZE	A4
TITLE 2.54mm Pin Header 12564 Series		CHK.	LINEAR	0.0 ±0.38	SCALE	NONE
PART NO 21X12564-XXXXXX-XXX-XXX-XXX				0.00±0.25	SHEET	4/6
DRW NO		DR.	KEN			
UNIT mm(INCH)		PROJECT	96.01.04			



1 2 3 4 5 6 7 8

A B C D E F G H



# E X T E R I O R

Ref.

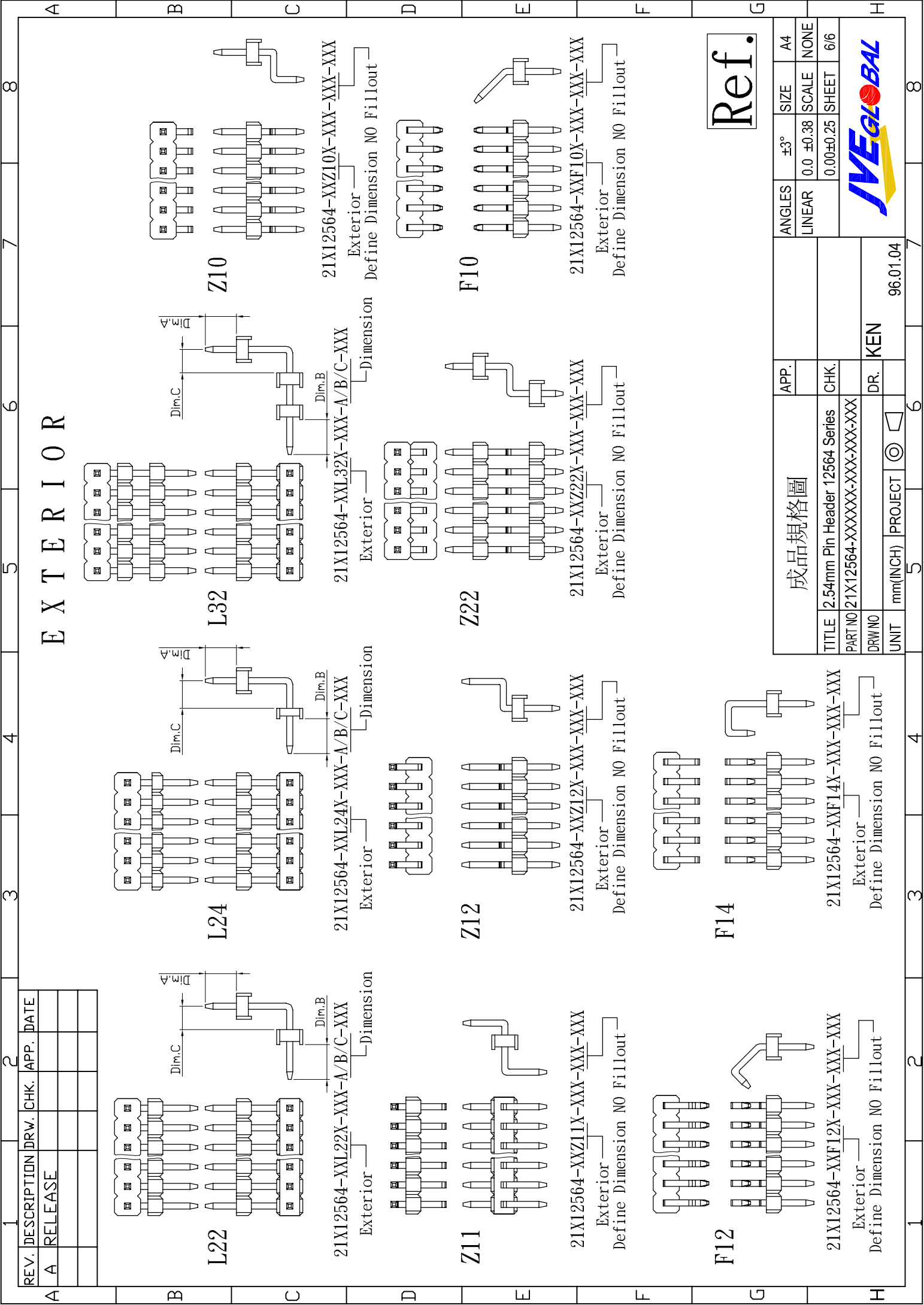
REV.	DESCRIPTION	DRW.	CHK.	APP.	DATE
A	RELEASE				

成品規格圖		APP.	ANGLES	±3°	SIZE	A4
TITLE 2.54mm Pin Header 12564 Series		CHK.	LINEAR		0.0 ±0.38	SCALE NONE
PART NO 21X12564-XXXXXX-XXX-XXX-XXX						
DRW NO		DR. KEN				
UNIT mm(INCH)		PROJECT		96.01.04		5/6



21X12564-XXC27X-XXX-XXX-XXX  
Exterior Define Dimension NO Fillout

**C27**



# EXTERIOR

REV.	DESCRIPTION	DRW.	CHK.	APP.	DATE
A	RELEASE				

Ref.

成品規格圖		APP.	ANGLES	±3°	SIZE	A4
TITLE 2.54mm Pin Header 12564 Series		CHK.	LINEAR	0.0	±0.38	NONE
PART NO 21X12564-XXXXXX-A/B/C-XXX				0.00±0.25		6/6
DRW NO		DR.	KEN			
UNIT	mm(INCH)	PROJECT	96.01.04			

