

1	2	3	4	5	6	7	8
REV. DESCRIPTION	DRW. CHK.	APP. DATE					
A	RELEASE						
SPECIFICATIONS Current Rating: 1 Amp Insulator resistance: 1000 Megohms Min. Contact resistance: 25 m ohms Max. Dielectric withstanding: AC 500V/minute Operating Temperature: -40° ~ +105°C Contact Material: BRASS Insulator Material: High Temperature Thermoplastic +Glass Fibre UL94V-0 Color: Black Finish: Gold, Tin or Duplex plated Standard: Gold flash all over Duplex plated: Gold plated on contact area Tin on solder area			ORDERING INFORMATION 21X41550-XXXXXX-XXX-XXX-XXX Material: B PBT, N Nylon-6T, L LCP Row of plastic: Quad Row Plastic Height: 1.50mm Squite & Pitch: 0.50sq x PH2.00x2.00mm Number of Contact: 08-120 Exterior: Referenced Sheet 3/5, 4/5, 5/5 Adjunctive Code: Referenced Sheet 2/5 Dimension: A, 6/3, 6/3/1.5, A/B/C Plating Type: G Gold Plated, T Tin Plated, H Duplex Plated Contact Plating: 01 Normal, 03 3µ", 05 5µ", 10 10µ" Color: B Black, R Red, U Blue, ...				
B	SPECIFICATIONS Current Rating: 1 Amp Insulator resistance: 1000 Megohms Min. Contact resistance: 25 m ohms Max. Dielectric withstanding: AC 500V/minute Operating Temperature: -40° ~ +105°C Contact Material: BRASS Insulator Material: High Temperature Thermoplastic +Glass Fibre UL94V-0 Color: Black Finish: Gold, Tin or Duplex plated Standard: Gold flash all over Duplex plated: Gold plated on contact area Tin on solder area						
C	SPECIFICATIONS Current Rating: 1 Amp Insulator resistance: 1000 Megohms Min. Contact resistance: 25 m ohms Max. Dielectric withstanding: AC 500V/minute Operating Temperature: -40° ~ +105°C Contact Material: BRASS Insulator Material: High Temperature Thermoplastic +Glass Fibre UL94V-0 Color: Black Finish: Gold, Tin or Duplex plated Standard: Gold flash all over Duplex plated: Gold plated on contact area Tin on solder area						
D	SPECIFICATIONS Current Rating: 1 Amp Insulator resistance: 1000 Megohms Min. Contact resistance: 25 m ohms Max. Dielectric withstanding: AC 500V/minute Operating Temperature: -40° ~ +105°C Contact Material: BRASS Insulator Material: High Temperature Thermoplastic +Glass Fibre UL94V-0 Color: Black Finish: Gold, Tin or Duplex plated Standard: Gold flash all over Duplex plated: Gold plated on contact area Tin on solder area						
E	SPECIFICATIONS Current Rating: 1 Amp Insulator resistance: 1000 Megohms Min. Contact resistance: 25 m ohms Max. Dielectric withstanding: AC 500V/minute Operating Temperature: -40° ~ +105°C Contact Material: BRASS Insulator Material: High Temperature Thermoplastic +Glass Fibre UL94V-0 Color: Black Finish: Gold, Tin or Duplex plated Standard: Gold flash all over Duplex plated: Gold plated on contact area Tin on solder area						
F	SPECIFICATIONS Current Rating: 1 Amp Insulator resistance: 1000 Megohms Min. Contact resistance: 25 m ohms Max. Dielectric withstanding: AC 500V/minute Operating Temperature: -40° ~ +105°C Contact Material: BRASS Insulator Material: High Temperature Thermoplastic +Glass Fibre UL94V-0 Color: Black Finish: Gold, Tin or Duplex plated Standard: Gold flash all over Duplex plated: Gold plated on contact area Tin on solder area			RoHS Compliance			
G	SPECIFICATIONS Current Rating: 1 Amp Insulator resistance: 1000 Megohms Min. Contact resistance: 25 m ohms Max. Dielectric withstanding: AC 500V/minute Operating Temperature: -40° ~ +105°C Contact Material: BRASS Insulator Material: High Temperature Thermoplastic +Glass Fibre UL94V-0 Color: Black Finish: Gold, Tin or Duplex plated Standard: Gold flash all over Duplex plated: Gold plated on contact area Tin on solder area			RoHS Compliance			
H	SPECIFICATIONS Current Rating: 1 Amp Insulator resistance: 1000 Megohms Min. Contact resistance: 25 m ohms Max. Dielectric withstanding: AC 500V/minute Operating Temperature: -40° ~ +105°C Contact Material: BRASS Insulator Material: High Temperature Thermoplastic +Glass Fibre UL94V-0 Color: Black Finish: Gold, Tin or Duplex plated Standard: Gold flash all over Duplex plated: Gold plated on contact area Tin on solder area			RoHS Compliance			

Ref.

示意图

ANGLES	±3°	SIZE	A4
LINEAR	0.0 ±0.38	SCALE	NONE
	0.00±0.25	SHEET	1/5

TITLE	2.00x2.00mm Pin Header 41550 Series	CHK.	
PART NO	21X41550-XXXXXX-XXX-XXX-XXX	DR.	KEN
UNIT	mm(INCH)	PROJECT	96.01.04

APP.			
成品规格图			
JVEGLOBAL			

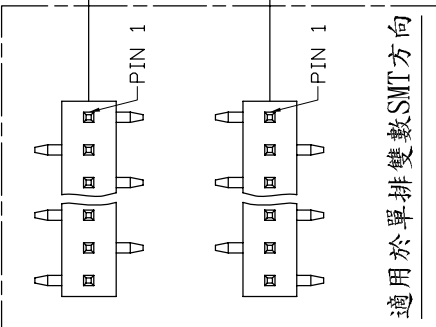
A B C D E F G H

1 2 3 4 5 6 7 8

REV.	DESCRIPTION	DRW.	CHK.	APP.	DATE
A	RELEASE				

ADJUNCTIVE CODE

21X41550-XXXXXX-XXX-XXX-ABCDEFMSXYZKVRWNHXXPX



塑膠彩色印刷

高低針

跳PIN

成品兩側打Kink

磷銅端子

紅銅端子

加 CAP

加 圓片端子

加 WAFER

加 Mini Jumper

彎角 or SMT+DIP

CUTTER

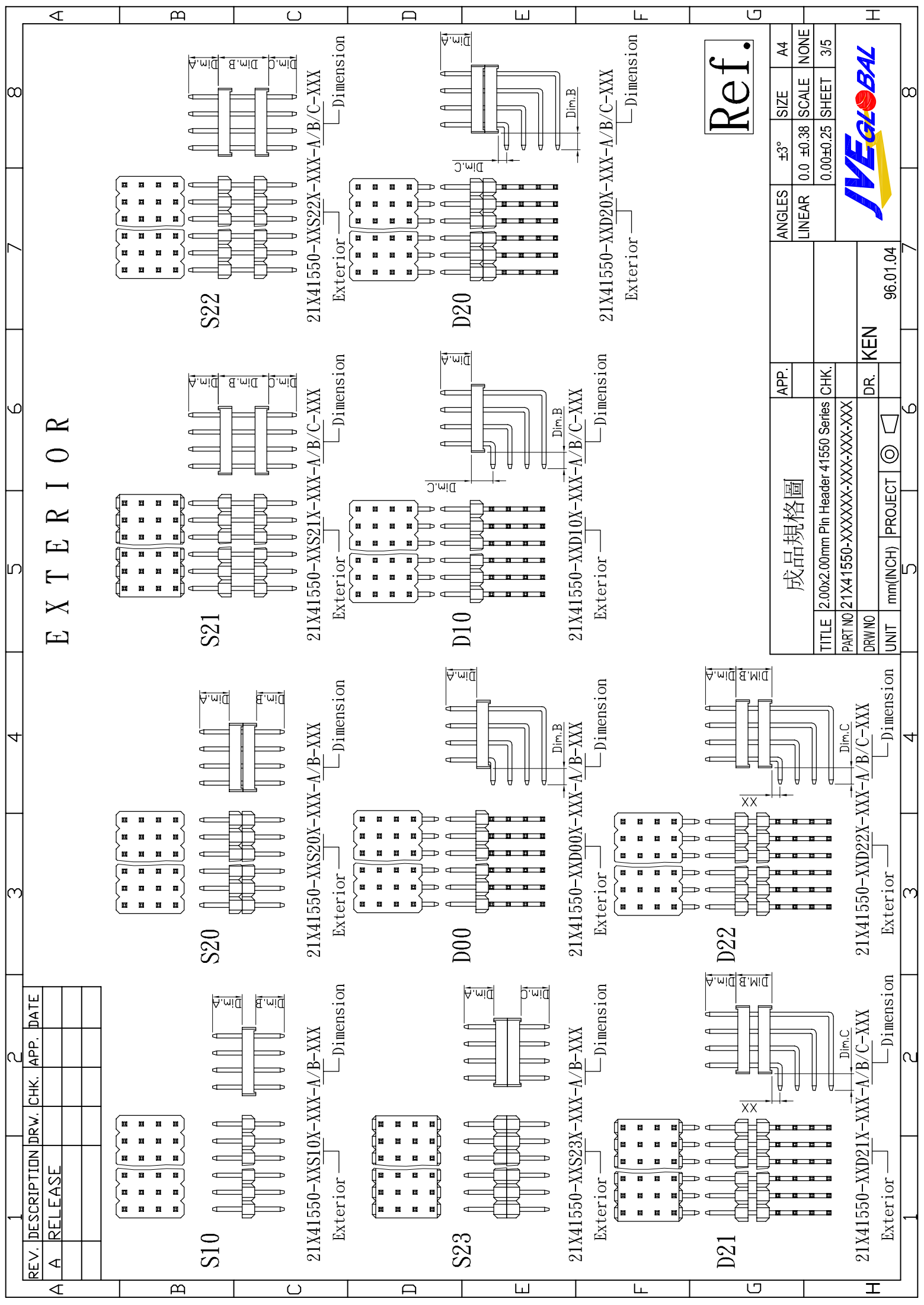
成品規格圖

TITLE	2.00x2.00mm Pin Header 41550 Series	CHK.	
PART NO	21X41550-XXXXXX-XXX-XXX-XXX	DR.	KEN
DRW NO		PROJECT	96.01.04
UNIT	mm(INCH)	SCALE	2/5
APP.		SIZE	A4
		ANGLES	±3°
		LINEAR	0.0 ±0.38
		SHEET	2/5



A B C D E F G H

1 2 3 4 5 6 7 8



EXTERIOR

REV.	DESCRIPTION	DRW.	CHK.	APP.	DATE
A	RELEASE				

成品規格圖		APP.	ANGLES	±3°	SIZE	A4
TITLE		2.00x2.00mm Pin Header 41550 Series	LINEAR	0.0	±0.38	NONE
PART NO		21X41550-XXXXXX-XXX-XXX-XXX	CHK.		0.00±0.25	3/5
DRW NO			DR.		KEN	
UNIT		mm(INCH)	PROJECT		96.01.04	



Ref.

8

7

6

5

4

3

2

1

2

3

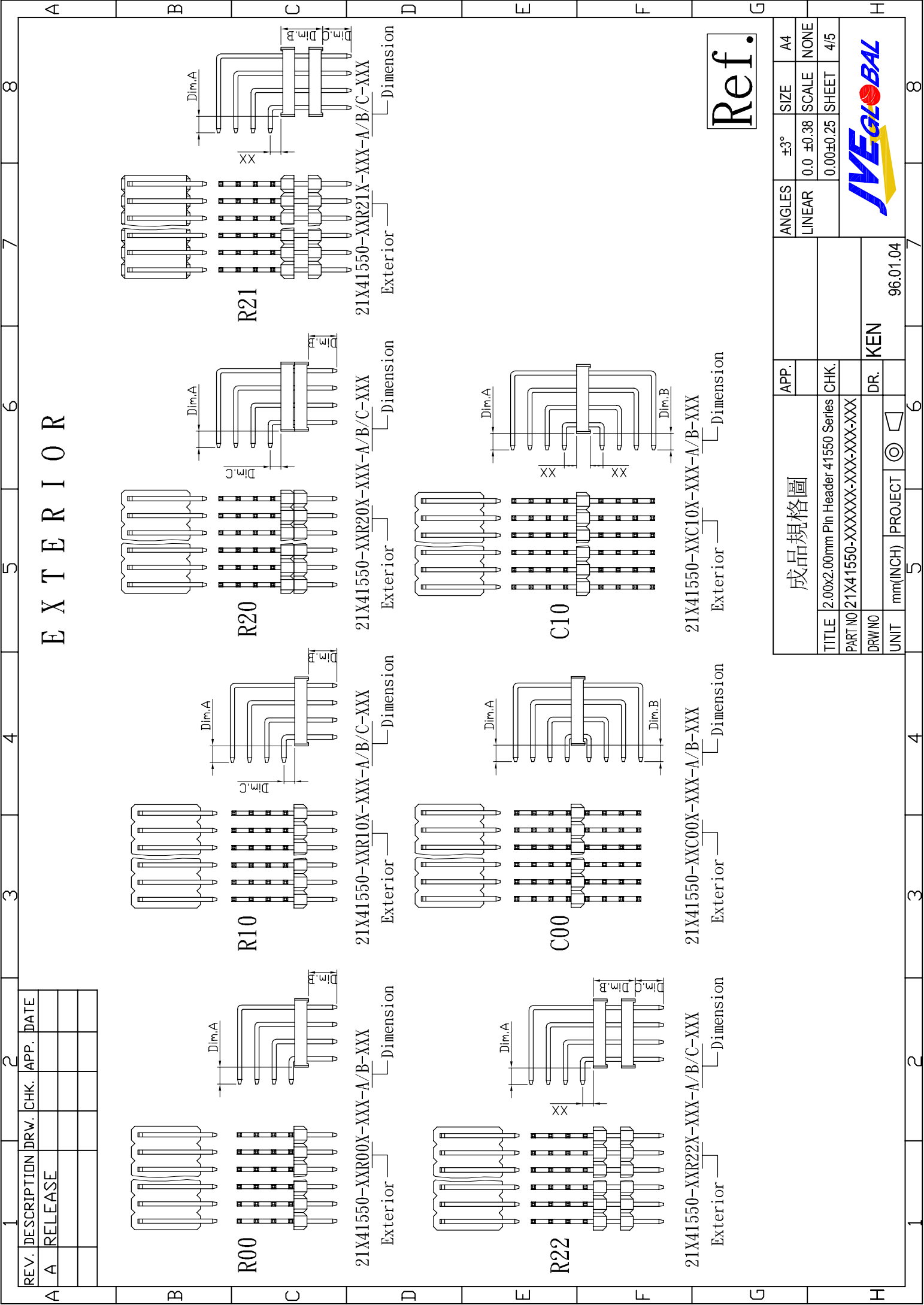
4

5

6

7

8



REV.	DESCRIPTION	DRW.	CHK.	APP.	DATE
A	RELEASE				

EXTERIOR

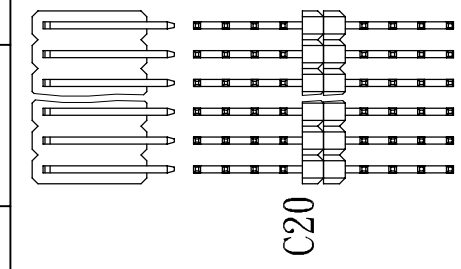
Ref.

成品規格圖		APP.	ANGLES	±3°	SIZE	A4
		TITLE	LINEAR	0.0 ±0.38	SCALE	NONE
2.00x2.00mm Pin Header 41550 Series		CHK.				
PART NO 21X41550-XXXXXX-A/B/C-XXX		DR.				
DRW NO		KEN				
UNIT mm(INCH)		PROJECT	96.01.04		7	8

1 2 3 4 5 6 7 8 A B C D E F G H

EXTERIOR

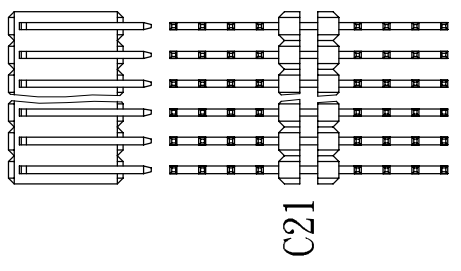
REV.	DESCRIPTION	DRW.	CHK.	APP.	DATE
A	RELEASE				



C20

21X41550-XXC20X-XXX-A/B-XXX

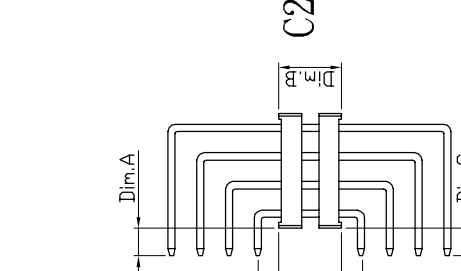
Exterior
Dimension



C21

21X41550-XXC21X-XXX-A/B/C-XXX

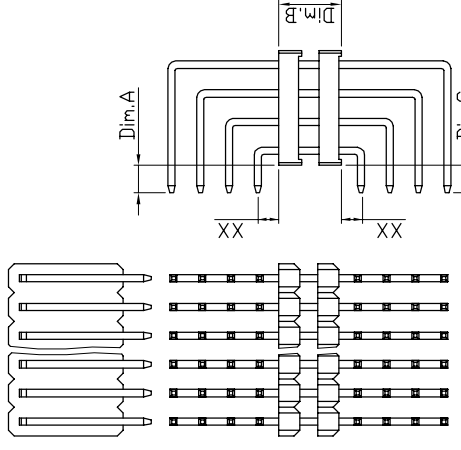
Exterior
Dimension



C22

21X41550-XXC22X-XXX-A/B/C-XXX

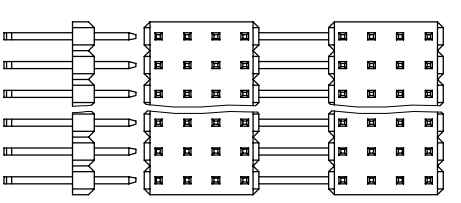
Exterior
Dimension



C26

21X41550-XXC26X-XXX-XXX-XXX

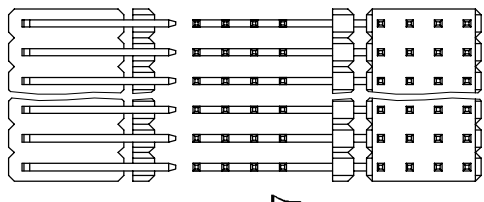
Exterior
Define Dimension NO Fillout



C27

21X41550-XXC27X-XXX-XXX-XXX

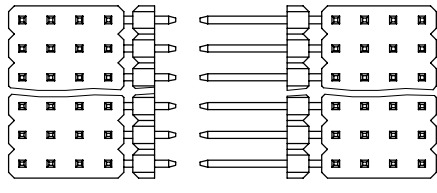
Exterior
Define Dimension NO Fillout



L21

21X41550-XXL21X-XXX-A/B/C-XXX

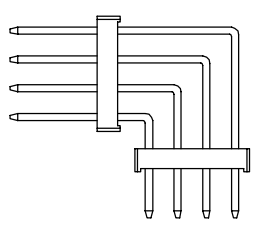
Exterior
Dimension



L22

21X41550-XXL22X-XXX-A/B/C-XXX

Exterior
Dimension



Ref.

成品規格圖		APP.	ANGLES	±3°	SIZE	A4
TITLE 2.00x2.00mm Pin Header 41550 Series		CHK.	LINEAR	0.0 ±0.38	SCALE	NONE
PART NO 21X41550-XXXXXX-XXX-XXX-XXX				0.00±0.25	SHEET	5/5
DRW NO		DR.	JVEGLOBAL			
UNIT mm(INCH)	PROJECT	DR.	96.01.04			
5	5	KEN	8			

A B C D E F G H 1 2 3 4 5 6 7 8