

REV.	DESCRIPTION	DRW.	CHK.	APP.	DATE
A	RELEASE				

**SPECIFICATIONS**

Current Rating:  
1 Amp

Insulator resistance:  
1000 Megohms Min.

Contact resistance:  
25 m ohms Max.

Dielectric withstanding:  
AC 500V/minute

Operating Temperature:  
-40° ~ +105°C

Contact Material:  
BRASS

Insulator Material:  
High Temperature Thermoplastic  
+Glass Fibre UL94V-0

Color: Black

Finish:  
Gold, Tin or Duplex plated  
Standard: Gold flash all over  
Duplex plated:  
Gold plated on contact area  
Tin on solder area

**RoHS Compliance**

**ORDERING INFORMATION**

21X21550-XXXXXX-XXX-XXX-XXX

Material: B PBT, N Nylon-6T, L LCP

Row of plastic Double Row

Plastic Height: 1.50mm

Squite & Pitch: 0.50sq x PH2.00x2.00mm

Number of Contact: 04-80

Exterior: Referenced Sheet 3/5, 4/5, 5/5

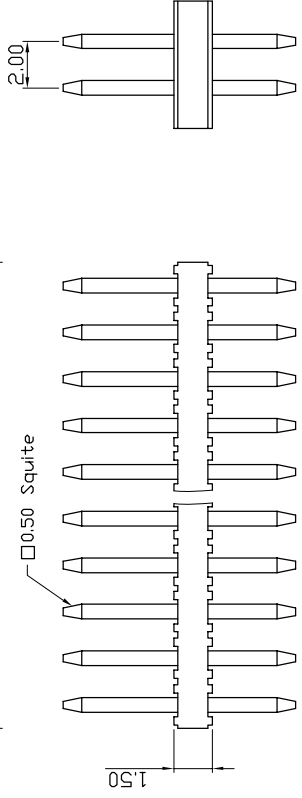
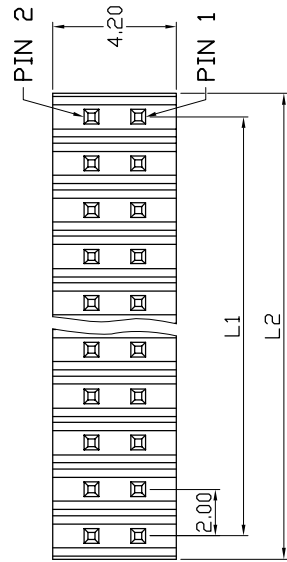
Adjunctive Code Referenced Sheet 2/5

Dimension: A, 6/3, 6/3/1.5, A/B/C

Plating Type: G Gold Plated, T Tin Plated, H Duplex Plated

Contact Plating: 01 Normal, 03 3µ", 05 5µ", 10 10µ"

Color: B Black, R Red, U Blue, ...



示意图

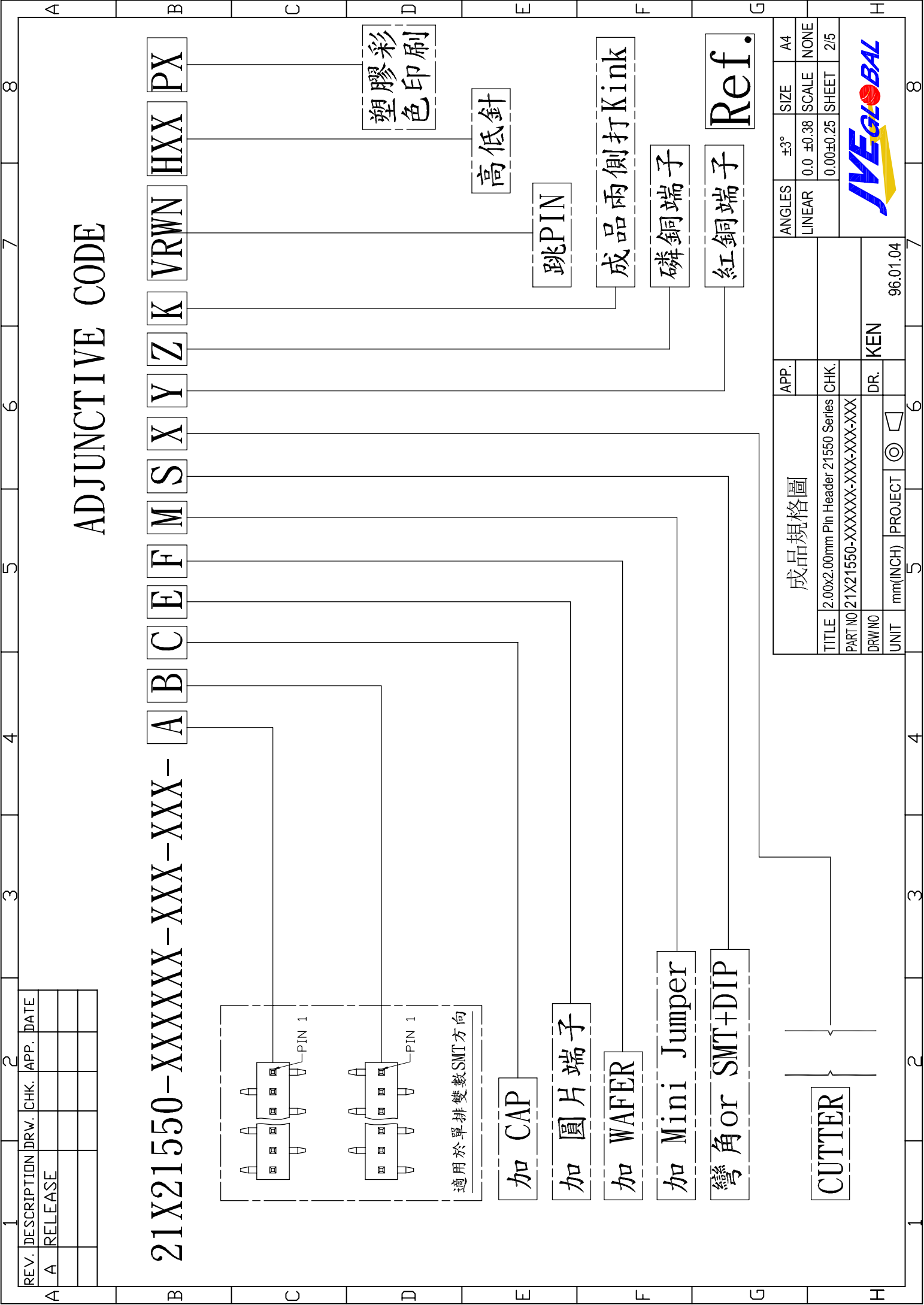
Ref.

Circuits	Dimension mm
2X2	L1
2X3	L2
2X4	4.00
2X5	6.00
2X6	8.00
2X7	10.00
2X8	12.00
2X9	14.00
2X10	16.00
2X11	18.00
2X12	20.00
2X13	22.00
2X14	24.00
2X15	26.00
2X16	28.00
2X17	30.00
2X18	32.00
2X19	34.00
2X20	36.00
2X21	38.00
2X22	40.00
2X23	42.00
2X24	44.00
2X25	46.00
2X26	48.00
2X27	50.00
2X28	52.00
2X29	54.00
2X30	56.00
2X31	58.00
2X32	60.00
2X33	62.00
2X34	64.00
2X35	66.00
2X36	68.00
2X37	70.00
2X38	72.00
2X39	74.00
2X40	76.00
	78.00
	80.00

APP.	ANGLES	±3°	SIZE
	LINEAR	0.0 ±0.38	A4
		0.00±0.25	NONE
			1/5

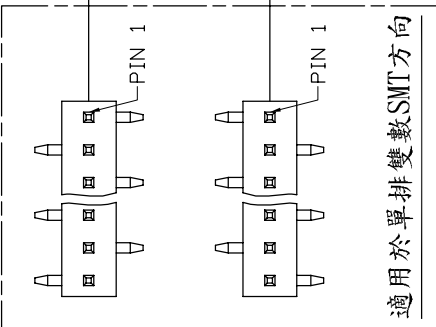
TITLE	CHK.
成品规格图	
2.00x2.00mm Pin Header 21550 Series	
PART NO 21X21550-XXXXXX-XXX-XXX-XXX	
DRW NO	
UNIT mm(INCH)	PROJECT
	DR. KEN
	96.01.04





# ADJUNCTIVE CODE

21X21550-XXXXXX-XXX-XXX-ABCDEFMSXYZKVRWNHXXPX



加 CAP

加圓片端子

加 WAFER

加 Mini Jumper

彎角 or SMT+DIP

CUTTER

塑膠彩色印刷

高低針

跳PIN

成品兩側打Kink

磷銅端子

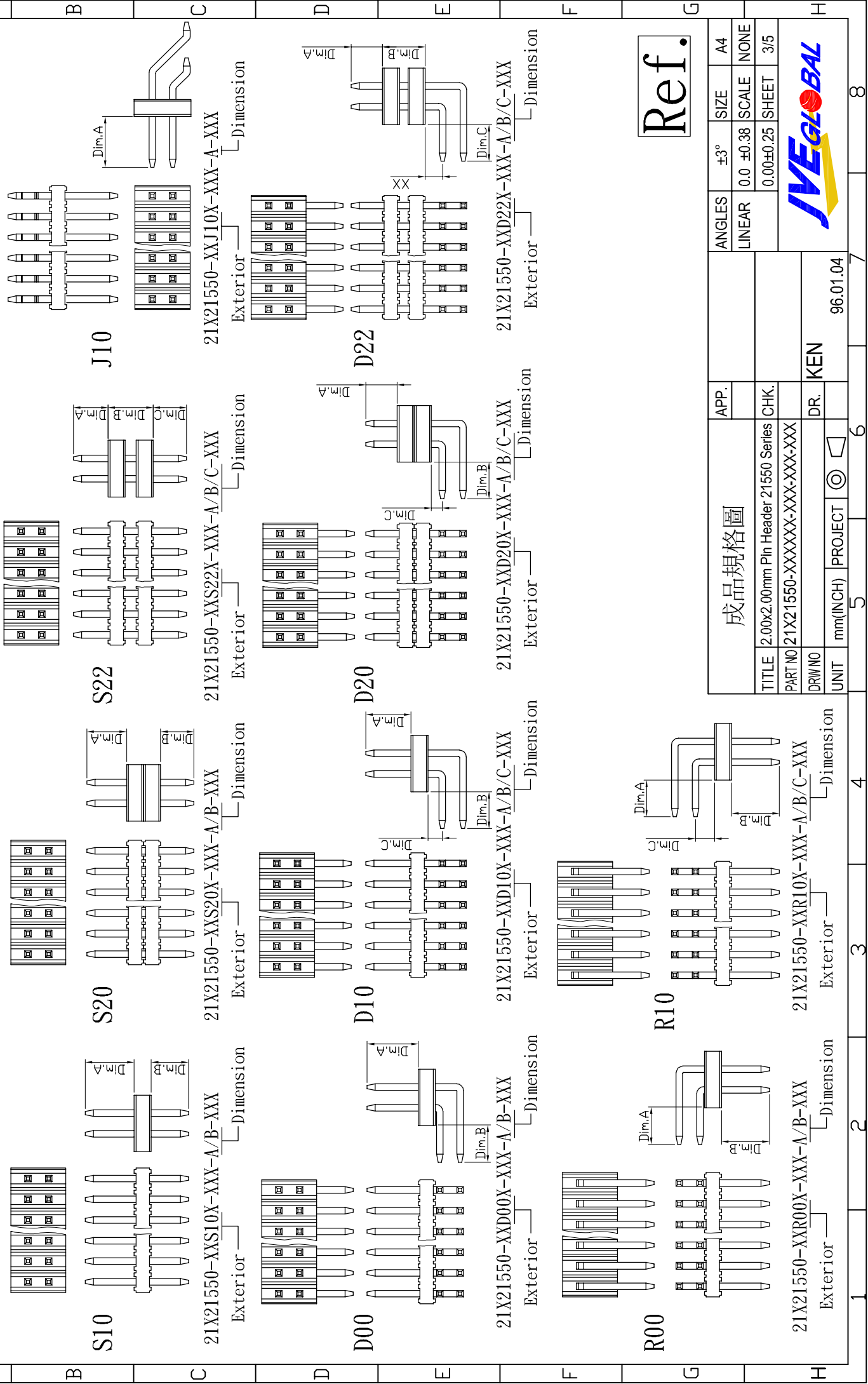
紅銅端子

Ref.

成品規格圖		APP.	ANGLES	±3°	SIZE	A4
TITLE: 2.00x2.00mm Pin Header 21550 Series		CHK.	LINEAR	0.0 ±0.38	SCALE	NONE
PART NO: 21X21550-XXXXXX-XXX-XXX-XXX-XXX				0.00±0.25	SHEET	2/5
DRW NO		DR.	KEN			
UNIT: mm(INCH)		PROJECT	96.01.04			



REV.	DESCRIPTION	DRW.	CHK.	APP.	DATE
A	RELEASE				



**Ref.**

成品規格圖		APP.	ANGLES	±3°	SIZE	A4	
TITLE		2.00x2.00mm Pin Header 21550 Series	LINEAR	0.0 ±0.38	SCALE	NONE	
PART NO		21X21550-XXXXXX-XXX-XXX-XXX	DR.		0.00±0.25	SHEET	3/5
DRW NO			PROJECT		KEN		96.01.04
UNIT		mm(INCH)	PROJECT		KEN		96.01.04



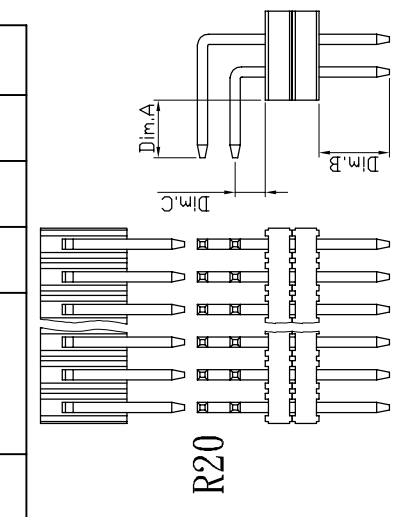
1 2 3 4 5 6 7 8

A B C D E F G H

1 2 3 4 5 6 7 8

# E X T E R I O R

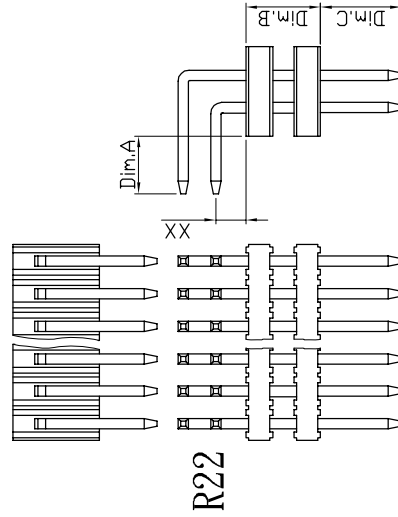
REV.	DESCRIPTION	DRW.	CHK.	APP.	DATE
A	RELEASE				



**R20**

21X21550-XXR20X-XXX-A/B/C-XXX  
Exterior

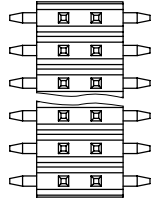
Dimension



**R22**

21X21550-XXR22X-XXX-A/B/C-XXX  
Exterior

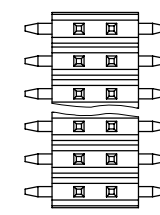
Dimension



**M00**

21X21550-XXM00X-XXX-A-XXX  
Exterior

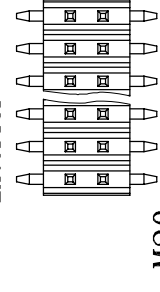
Dimension



**M10**

21X21550-XXM10X-XXX-A/B-XXX  
Exterior

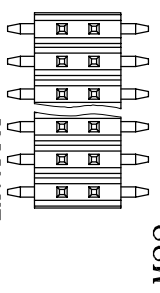
Dimension



**M20**

21X21550-XXM20X-XXX-A/B-XXX  
Exterior

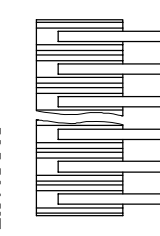
Dimension



**M22**

21X21550-XXM22X-XXX-A/B/C-XXX  
Exterior

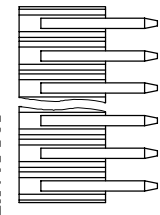
Dimension



**C00**

21X21550-XXC00X-XXX-A/B-XXX  
Exterior

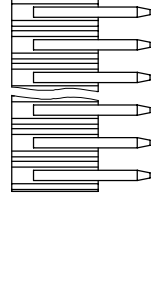
Dimension



**C10**

21X21550-XXC10X-XXX-A/B-XXX  
Exterior

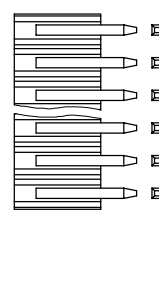
Dimension



**C20**

21X21550-XXC20X-XXX-A/B-XXX  
Exterior

Dimension



**C22**

21X21550-XXC22X-XXX-A/B/C-XXX  
Exterior

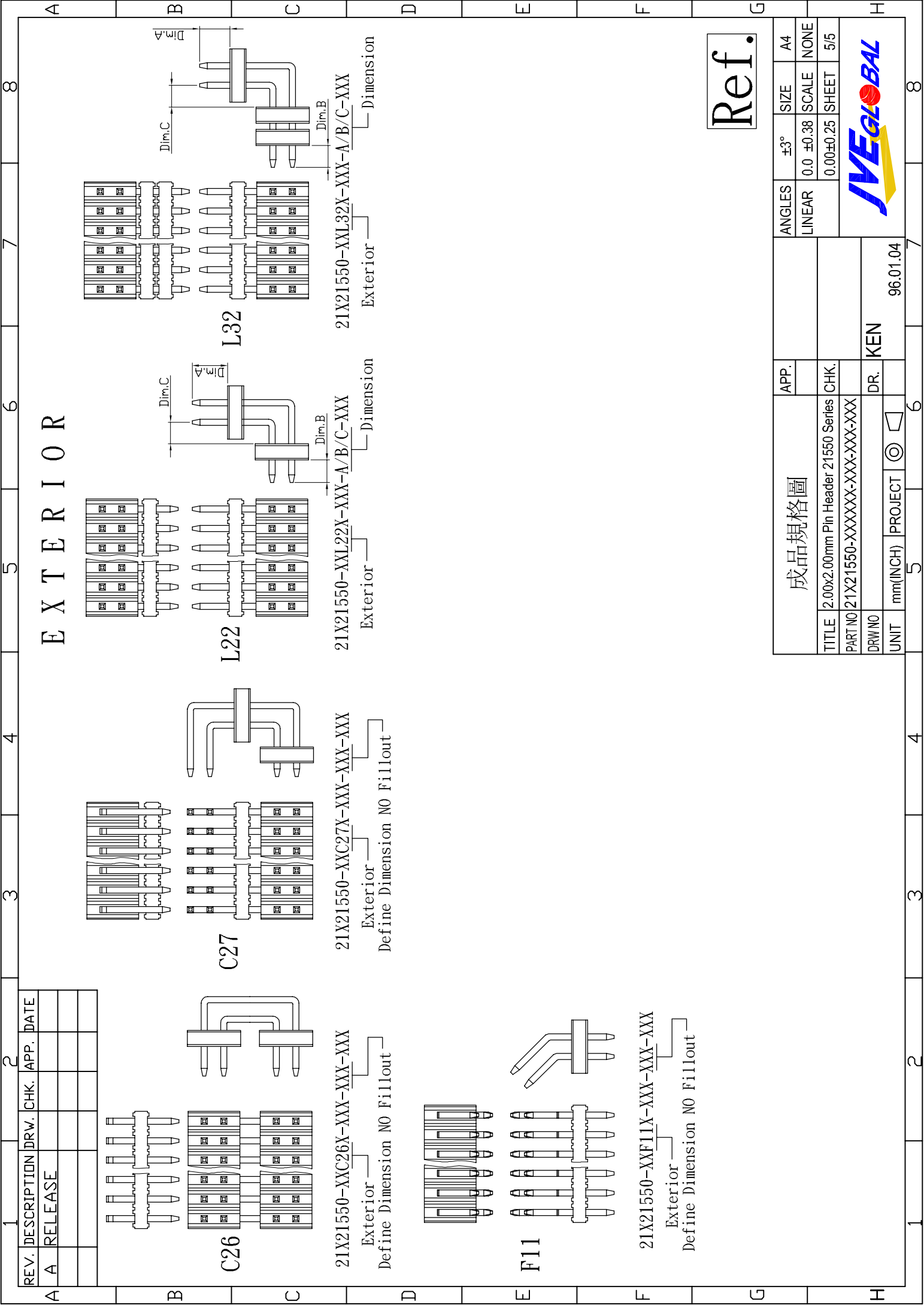
Dimension

Ref.

成品規格圖		APP.	ANGLES	±3°	SIZE	A4
TITLE		2.00x2.00mm Pin Header 21550 Series	LINEAR	0.0	±0.38	NONE
PART NO		21X21550-XXXXXX-XXX-XXX-XXX	CHK.		0.00±0.25	4/5
DRW NO			DR.		KEN	
UNIT		mm(INCH)	PROJECT		96.01.04	



1 2 3 4 5 6 7 8



# EXTERIOR

Ref.

REV.	DESCRIPTION	DRW.	CHK.	APP.	DATE
A	RELEASE				

成品規格圖		APP.	ANGLES	±3°	SIZE	A4
TITLE	2.00x2.00mm Pin Header 21550 Series	CHK.	LINEAR	0.0	±0.38	NONE
PART NO	21X21550-XXXXXXXX-XXX-XXX-XXX			0.00	±0.25	SHEET 5/5
DRW NO		DR.	KEN			
UNIT	mm(INCH)	PROJECT	96.01.04			

