

REV.	DESCRIPTION	DRW.	CHK.	APP.	DATE
A	RELEASE				

**SPECIFICATIONS**

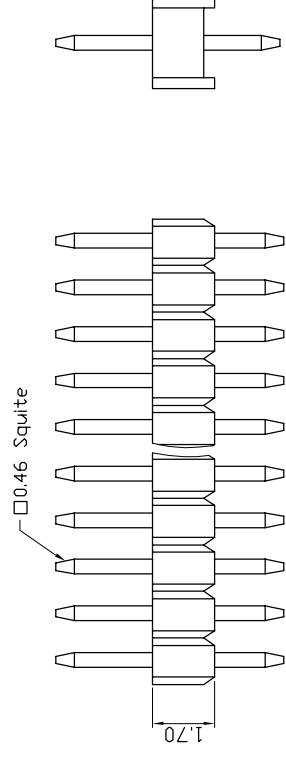
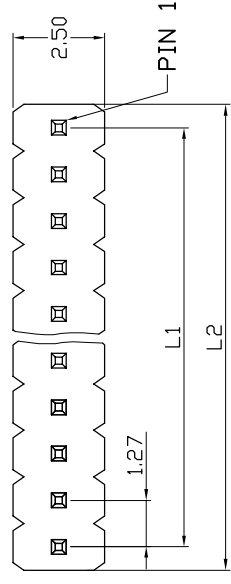
Current Rating:  
 1 Amp  
 Insulator resistance:  
 1000 Megohms Min.  
 Contact resistance:  
 20 m ohms Max.  
 Dielectric withstanding:  
 AC 500V/minute  
 Operating Temperature:  
 -40° ~ +105°C  
 Contact Material:  
 BRASS  
 Insulator Material:  
 High Temperature Thermoplastic  
 +Glass Fibre UL94V-0  
 Color: Black  
 Finish:  
 Gold, Tin or Duplex plated  
 Standard: Gold flash all over  
 Duplex plated:  
 Gold plated on contact area  
 Tin on solder area

**RoHS Compliance**

**ORDERING INFORMATION**

21X11746-XXXXXX-XXX-XXX-XXX

Material: B PBT, N Nylon-6T, L LCP  
 Row of plastic Single Row  
 Plastic Height: 1.70mm  
 Spacing & Pitch: 0.46sq x PHL. 27mm  
 Number of Contact: 02-40  
 Exterior: Referenced Sheet 3/6, 4/6, 5/6, 6/6  
 Adjunctive Code Referenced Sheet 2/6  
 Dimension: A, 6/3, A/B, 6/3/1.5, A/B/C  
 Plating Type: G Gold Plated, T Tin Plated, H Duplex Plated  
 Contact Plating: 01 Normal, 03 3µ", 05 5µ", 10 10µ"  
 Color: B Black, R Red, U Blue, ...



示意图

Ref.

Circuits	Dimension mm
2	L1
3	L2
4	1.27
5	2.54
6	3.81
7	5.08
8	6.35
9	7.62
10	8.89
11	10.16
12	11.43
13	12.70
14	13.97
15	15.24
16	16.51
17	17.78
18	19.05
19	20.32
20	21.59
21	22.86
22	24.13
23	25.40
24	26.67
25	27.94
26	29.21
27	30.48
28	31.75
29	33.02
30	34.29
31	35.56
32	36.83
33	38.10
34	39.37
35	40.64
36	41.91
37	43.18
38	44.45
39	45.72
40	46.99
	48.26
	49.53
	50.80

APP.	ANGLES	±3°	SIZE
成品規格圖	LINEAR	0.0 ±0.38	A4
TITLE: 1.27mm Pin Header 11746 Series	CHK.	0.00±0.25	NONE
PART NO: 21X11746-XXXXXX-XXX-XXX-XXX	DR.		1/6
DRW NO	UNIT	mm(INCH)	PROJECT
			96.01.04
			7
			8



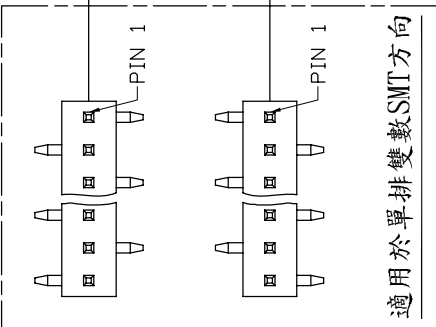
A B C D E F G H

1 2 3 4 5 6 7 8

REV.	DESCRIPTION	DRW.	CHK.	APP.	DATE
A	RELEASE				

# ADJUNCTIVE CODE

21X11746-XXXXXX-XXX-XXX- A B C E F M S X Y Z K VRWN HXX PX



塑膠彩色印刷

高低針

跳PIN

成品兩側打Kink

磷銅端子

紅銅端子

加 CAP

加 圓片端子

加 WAFER

加 Mini Jumper

彎角 or SMT+DIP

CUTTER

成品規格圖

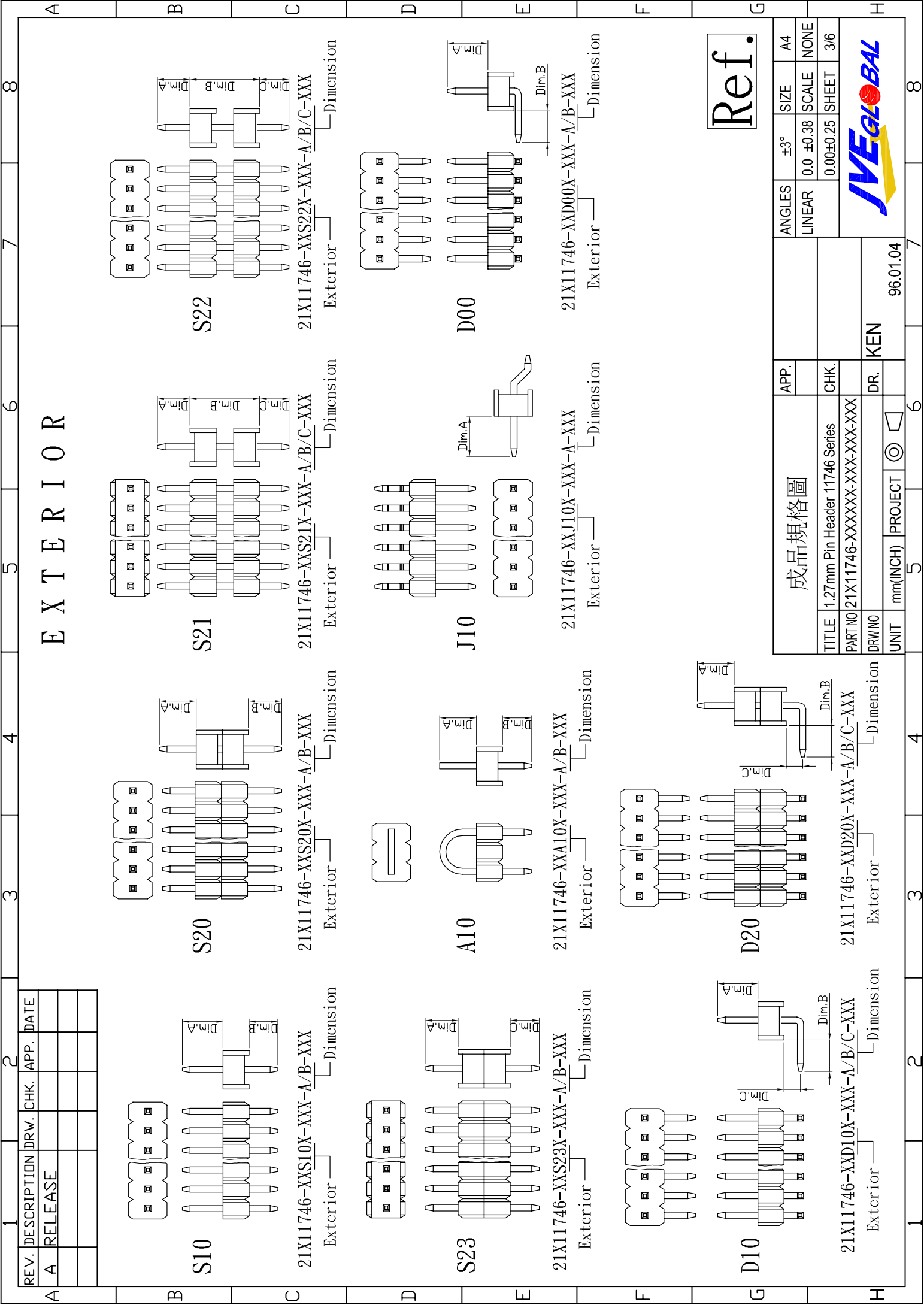
TITLE	1.27mm Pin Header 11746 Series	CHK.	
PART NO	21X11746-XXXXXX-XXX-XXX-XXX	DR.	KEN
UNIT	mm(INCH)	PROJECT	96.01.04

ANGLES	±3°	SIZE	A4
LINEAR	0.0 ±0.38	SCALE	NONE
	0.00±0.25	SHEET	2/6



A B C D E F G H

1 2 3 4 5 6 7 8



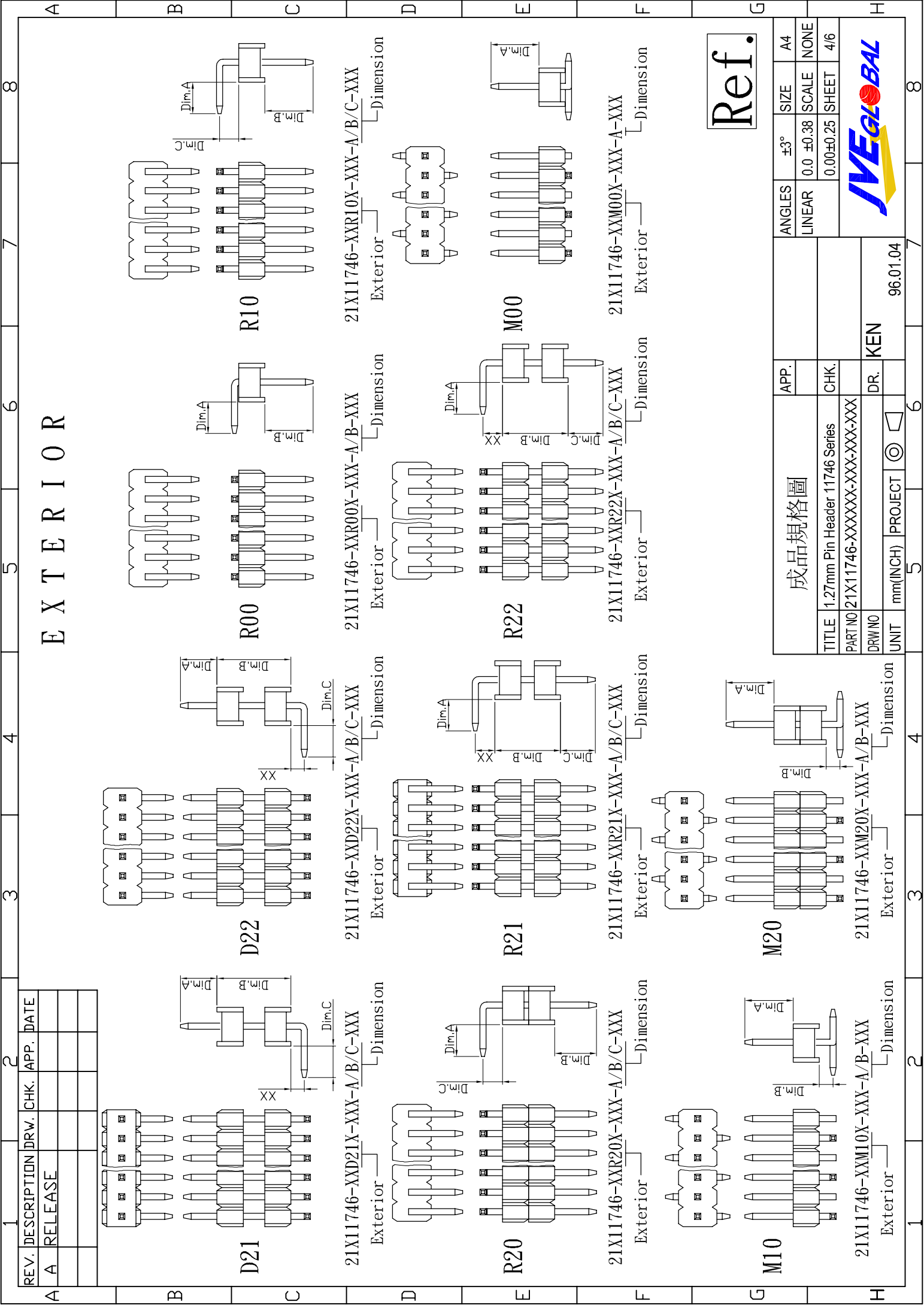
# EXTERIOR

REV.	DESCRIPTION	DRW.	CHK.	APP.	DATE
A	RELEASE				

Ref.

成品規格圖		APP.	ANGLES	±3°	SIZE	A4
TITLE	1.27mm Pin Header 11746 Series	CHK.	LINEAR	0.0	±0.38	NONE
PART NO	21X11746-XXXXXX-A/B/C-XXX			0.00	±0.25	3/6
DRW NO		DR.	KEN			
UNIT	mm(INCH)	PROJECT	96.01.04			





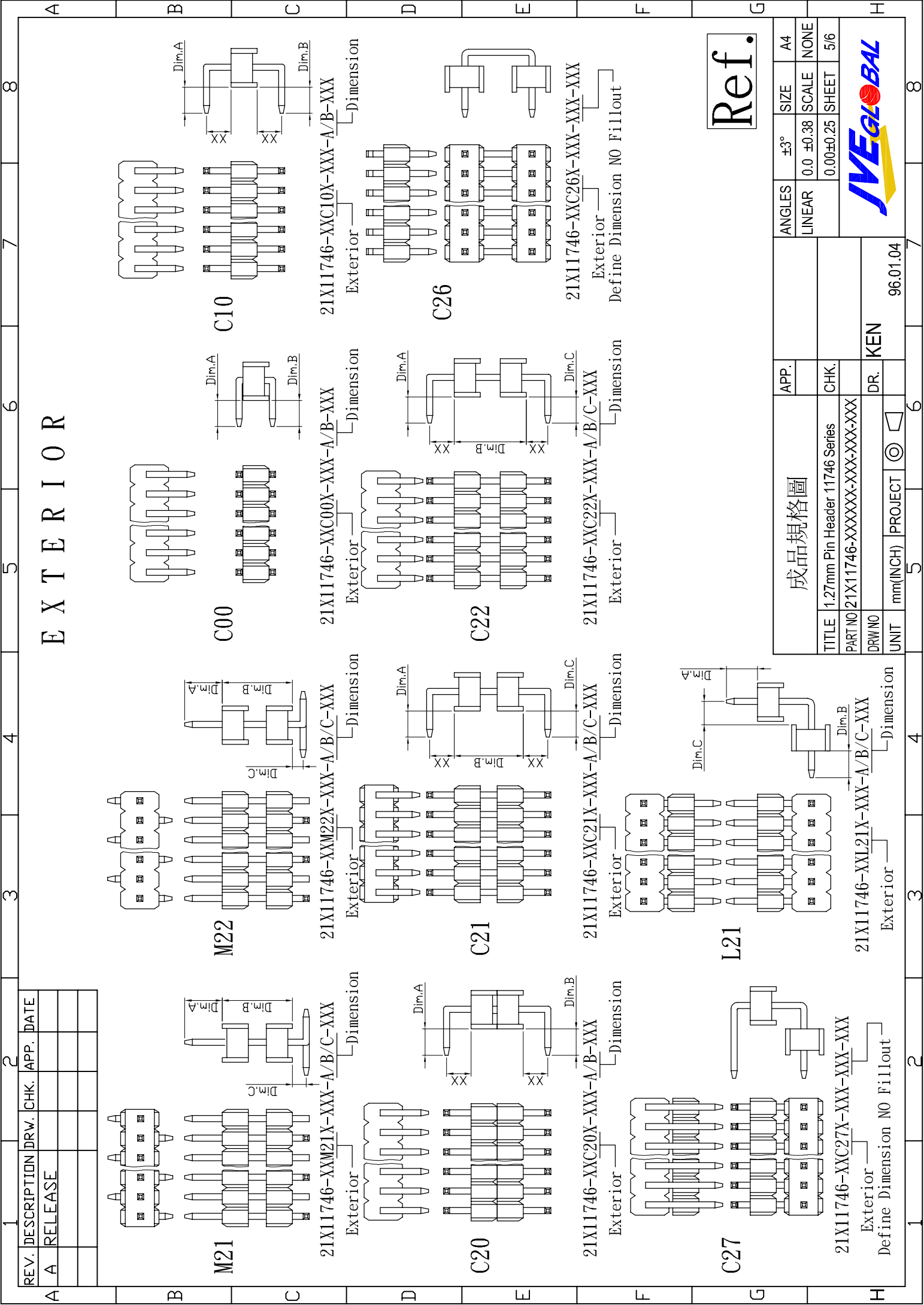
# E X T E R I O R

REV.	DESCRIPTION	DRW.	CHK.	APP.	DATE
A	RELEASE				

Ref.

成品規格圖		APP.	ANGLES	±3°	SIZE	A4
TITLE 1.27mm Pin Header 11746 Series		CHK.	LINEAR	0.0 ±0.38	SCALE	NONE
PART NO 21X11746-XXXXXX-XXX-A/B/C-XXX		DR.	0.00±0.25		SHEET	4/6
DRW NO	PROJECT		96.01.04		K E N	
UNIT	mm(INCH)	PROJECT		96.01.04		8





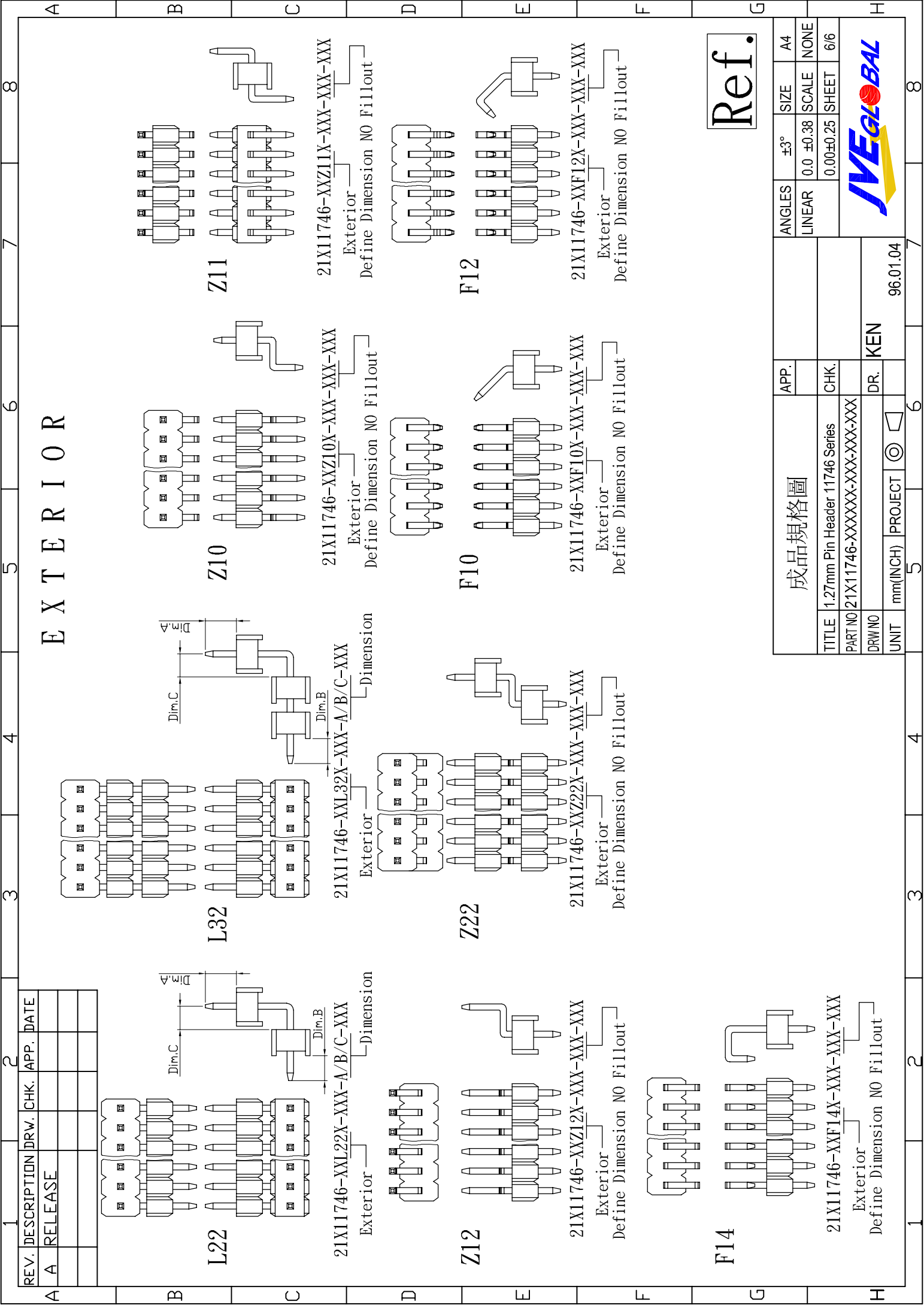
# EXTERIOR

Ref.

REV.	DESCRIPTION	DRW.	CHK.	APP.	DATE
A	RELEASE				

成品規格圖		APP.	ANGLES	±3°	SIZE	A4
TITLE	1.27mm Pin Header 11746 Series	CHK.	LINEAR	0.0	±0.38	NONE
PART NO	21X11746-XXXXXX-XXX-XXX-XXX			0.00	±0.25	5/6
DRW NO		DR.	KEN			
UNIT	mm(INCH)	PROJECT	96.01.04			





# EXTERIOR

REV.	DESCRIPTION	DRW.	CHK.	APP.	DATE
A	RELEASE				

Ref.

成品規格圖		APP.	ANGLES	±3°	SIZE	A4
TITLE	1.27mm Pin Header 11746 Series	CHK.	LINEAR	0.0	±0.38	NONE
PART NO	21X11746-XXXXXX-XXX-XXX-XXX			0.00	±0.25	6/6
DRW NO		DR.				
UNIT	mm(INCH)	PROJECT				



96.01.04

KEN



PROJECT

5

6

7

8