

REV.	DESCRIPTION	DRW.	CHK.	APP.	DATE
A	RELEASE				

Dimension	mm
L1	0.80
L2	1.86
	1.60
	2.40
	3.46
	4.26
	5.06
	6.66
	7.46
	8.26
	9.06
	9.86
	10.66
	11.46
	12.26
	13.06
	13.86
	14.66
	15.46
	16.26
	17.06
	17.86
	18.66
	19.46
	20.26
	21.06
	21.86
	22.66
	23.46
	24.26
	25.06
	25.86
	26.66
	26.46
	28.26
	29.06
	29.86
	30.66
	31.46
	32.26
	33.06
	33.86
	34.66
	35.46
	36.26
	37.06
	37.86
	38.66
	39.46
	40.26

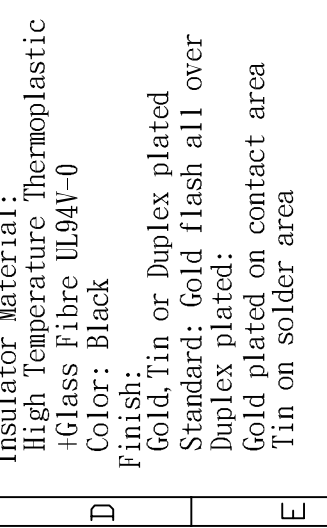
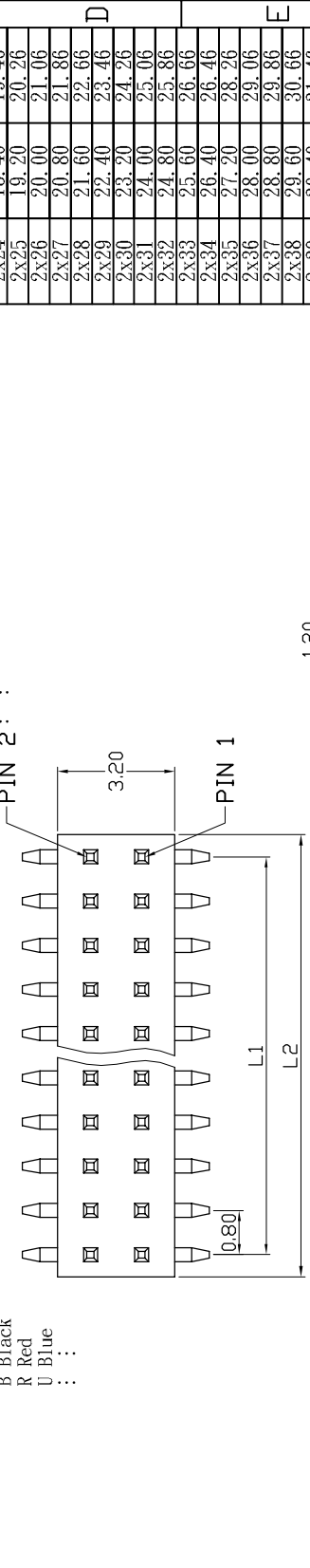
ORDERING INFORMATION

21X21531-XXXXXX-XXX-XXX-XXX

Material: Y Nylon-9T
 Row of plastic: Double Row
 Plastic Height: 1.50mm
 Spacing & Pitch: 0.30sq x PH0.80xL.20mm
 Number of Contact: 04-100
 Exterior: Referenced Sheet 3/3
 Color: B Black, R Red, U Blue, ...
 Adjunctive Code: Referenced Sheet 2/3
 Dimension: 6, 6/3, 6/3/1.5, A/B/C
 Plating Type: G Gold Plated, T Tin Plated, H Duplex Plated
 Contact Plating: 01 Normal, 03 3μ", 05 5μ", 10 10μ"

SPECIFICATIONS

Current Rating: 0.75 Amp
 Insulator resistance: 1000 Megohms Min.
 Contact resistance: 20 m ohms Max.
 Dielectric withstanding: AC 250V/minute
 Operating Temperature: -40° ~ +105°C
 Contact Material: BRASS
 Insulator Material: High Temperature Thermoplastic +Glass Fibre UL94V-0
 Color: Black
 Finish: Gold, Tin or Duplex plated
 Standard: Gold flash all over
 Duplex plated: Gold plated on contact area
 Tin on solder area



Cir-cuits	Dimension
2x2	0.80
2x3	1.60
2x4	2.40
2x5	3.20
2x6	4.00
2x7	4.80
2x8	5.60
2x9	6.40
2x10	7.20
2x11	8.00
2x12	8.80
2x13	9.60
2x14	10.40
2x15	11.20
2x16	12.00
2x17	12.80
2x18	13.60
2x19	14.40
2x20	15.20
2x21	16.00
2x22	16.80
2x23	17.60
2x24	18.40
2x25	19.20
2x26	20.00
2x27	20.80
2x28	21.60
2x29	22.40
2x30	23.20
2x31	24.00
2x32	24.80
2x33	25.60
2x34	26.40
2x35	27.20
2x36	28.00
2x37	28.80
2x38	29.60
2x39	30.40
2x40	31.20
2x41	32.00
2x42	32.80
2x43	33.60
2x44	34.40
2x45	35.20
2x46	36.00
2x47	36.80
2x48	37.60
2x49	38.40
2x50	39.20

RoHS Compliance

Ref.

示意图

REV.	DESCRIPTION	DRW.	CHK.	APP.	DATE
A	RELEASE				

ANGLES	±3°	SIZE	A4
LINEAR	0.0 ±0.38	SCALE	NONE
	0.00±0.25	SHEET	1/3

TITLE	0.80x1.20mm Pin Header 21531 Series	CHK.
PART NO	21X21531-XXXXXX-XXX-XXX-XXX	
DRW NO		
UNIT	mm(INCH)	PROJECT
		DR. KEN
		96.01.04

APP.	SIZE	A4
	0.0 ±0.38	NONE
	0.00±0.25	SHEET 1/3

JVEGLOBAL

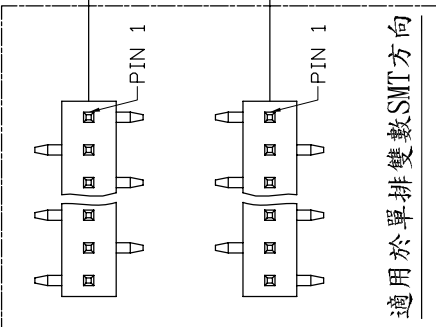
A B C D E F G H

1 2 3 4 5 6 7 8

REV.	DESCRIPTION	DRW.	CHK.	APP.	DATE
A	RELEASE				

ADJUNCTIVE CODE

21X21531-XXXXXX-XXX-XXX-**A B C E F M S X Y Z K VRWN HXX PX**



塑膠彩色印刷

高低針

跳PIN

成品兩側打Kink

磷銅端子

紅銅端子

加 CAP

加 圓片 端子

加 WAFER

加 Mini Jumper

彎角 or SMT+DIP

CUTTER

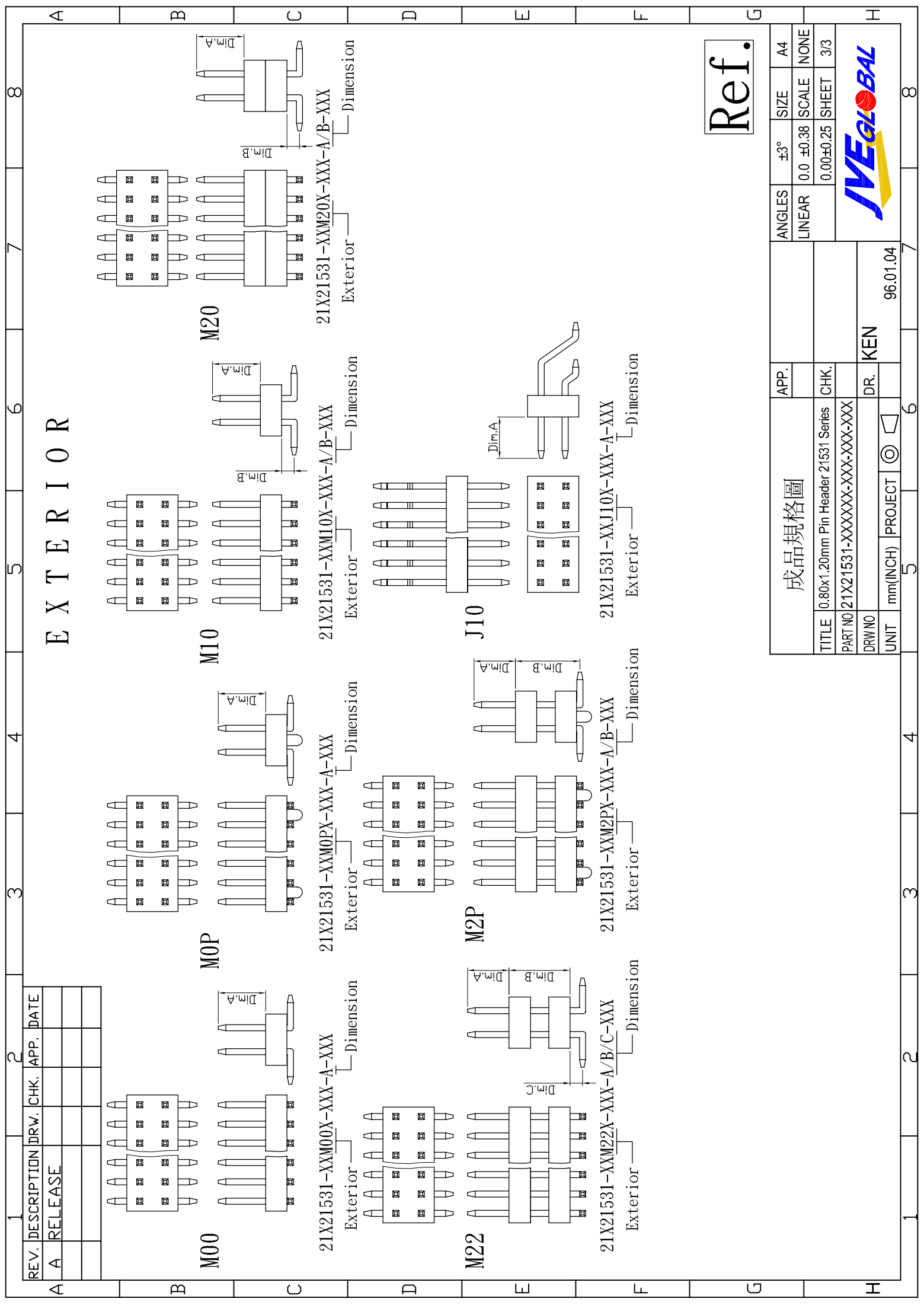
成品規格圖

TITLE	0.80x1.20mm Pin Header 21531 Series	CHK.		APP.		ANGLES	±3°	SIZE	A4
PART NO	21X21531-XXXXXX-XXX-XXX-XXX	DR.	KEN	DR.	KEN	LINEAR	0.0 ±0.38	SCALE	NONE
DRW NO		UNIT	mm(INCH)	PROJECT	96.01.04		0.00±0.25	SHEET	2/3



A B C D E F G H

1 2 3 4 5 6 7 8



EXTERIOR

Ref.

REV.	DESCRIPTION	DRW.	CHK.	APP.	DATE
A	RELEASE				

成品規格圖		APP.	ANGLES	±3°	SIZE	A4
TITLE	0.80x1.20mm Pin Header 21531 Series	CHK.	LINEAR	0.0	±0.38	NONE
PART NO	21X21531-XXXXXX-XXX-XXX-XXX			0.00	±0.25	SHEET 3/3
DRW NO		DR.	KEN			
UNIT	mm(INCH)	PROJECT	96.01.04			

